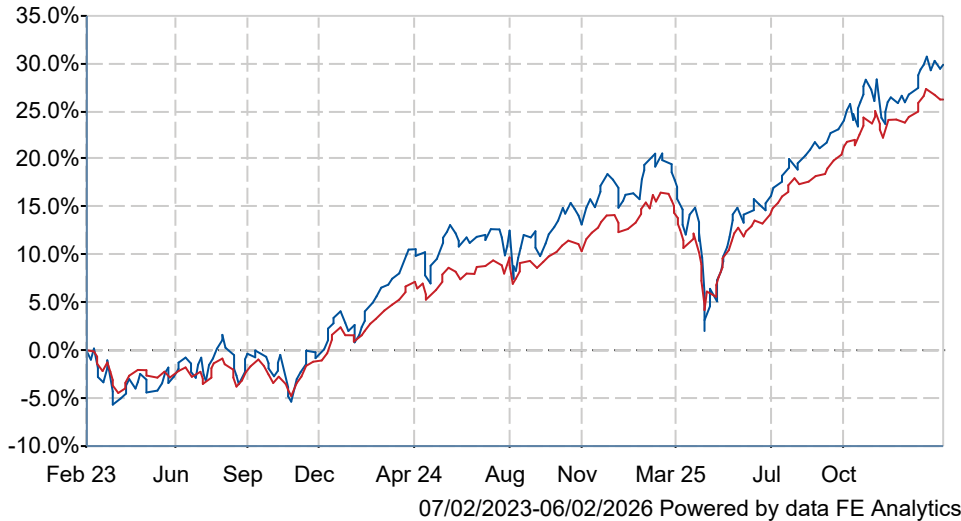




Liontrust MA Explorer 100 S Acc

What is the Fund's objective?

The Fund aims to generate capital growth and income over the long term (5 years or more)

Cumulative Performance




| | 3m | 6m | 1yr | 3yrs | 5yrs |
|---|-----------|-----------|-----------|-----------|----------|
|  Liontrust MA Explorer 100 S Acc | +2.0 | +8.6 | +9.1 | +29.1 | +37.6 |
|  Flexible Investment | +1.6 | +7.5 | +8.5 | +26.2 | +31.9 |
| Rank within sector | 131 / 335 | 129 / 325 | 154 / 319 | 117 / 289 | 76 / 244 |
| Quartile | 2 | 2 | 2 | 2 | 2 |

Fund Information

| | |
|--------------|-----------------------------------|
| Sector | Flexible Investment |
| Asset Class | Mixed Asset |
| Launch Date | 01-Mar-2004 |
| Fund Size | £36.4m / \$49.6m (06-Feb-2026) |
| Fund Manager | Multi-Asset investment team |

How does FE fundinfo rate this fund?

| | |
|--------------------------|---|
| FE fundinfo Crown Rating |  |
| Risk Score | 85 |

Investment Details

| | |
|-------------------------------|------------------------|
| Initial Charge | n/a |
| Annual Charges | 0.55% |
| Note to charges | n/a |
| Minimum Initial Investment | £ 1,000,000 |
| Minimum Additional Investment | £ 500 |
| Dividend Policy | Jun 30, Dec 31 (Final) |

Prices

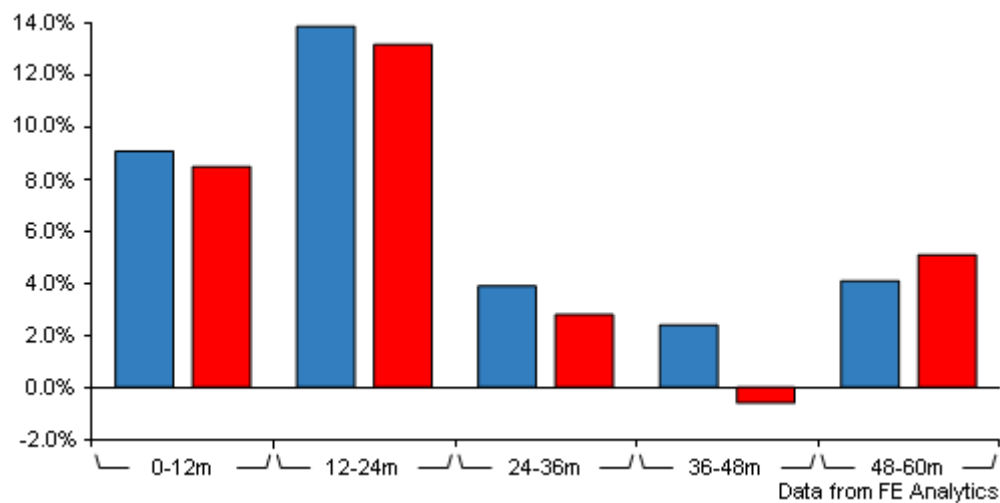
| | |
|------------|-------------|
| Unit Type | ACC |
| Mid | 255.61(GBX) |
| Price Date | 06 Feb 2026 |
| Yield | 0.95 |

Codes

| | |
|----------|--------------|
| Citicode | JMMK |
| SEDOL | BCZW684 |
| ISIN | GB00BCZW6844 |

Liontrust MA Explorer 100 S Acc

Discrete Performance



| | 0-12m | 12m-24m | 24m-36m | 36m-48m | 48m-60m |
|--|-----------|-----------|-----------|----------|-----------|
| <div>Liontrust MA Explorer 100 S Acc</div> | +9.1 | +13.9 | +3.9 | +2.4 | +4.1 |
| <div>Flexible Investment</div> | +8.5 | +13.2 | +2.8 | -0.6 | +5.1 |
| Rank within sector | 154 / 319 | 129 / 302 | 124 / 289 | 57 / 263 | 141 / 243 |
| Quartile | 2 | 2 | 2 | 1 | 3 |

All prices in Pence Sterling (GBX) unless otherwise specified. Price total return performance figures are calculated on a bid price to bid price basis (mid to mid for OEICs) with net income (dividends) reinvested. Performance figures are shown in Pound Sterling (GBP).

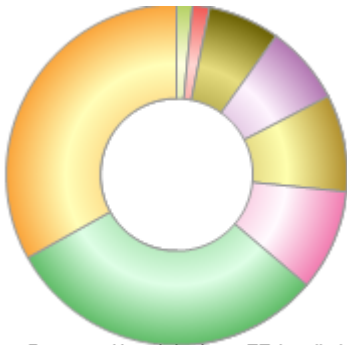
Contact Details

| | |
|-------------------|--|
| Address | 2 Savoy Court, London, United Kingdom, WC2R 0EZ |
| Telephone numbers | 020 7412 1700 (Main Number) |
| Website | www.liontrust.com |
| Email | info@liontrust.co.uk |

Liontrust MA Explorer 100 S Acc

Asset Allocation (30 Jan 2026)

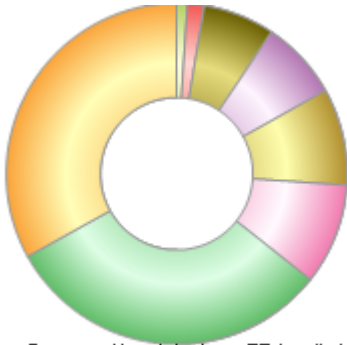
| Rank | Asset Classes | % |
|------|---------------------------------|-------|
| 1 | North American Equities | 33.13 |
| 2 | UK Equities | 30.74 |
| 3 | Europe ex UK Equities | 9.55 |
| 4 | Global Emerging Market Equities | 9.15 |
| 5 | Asia Pacific Equities | 7.53 |
| 6 | Japanese Equities | 6.80 |
| 7 | Money Market | 1.58 |
| 8 | Alternative Assets | 1.52 |
| | | |
| | | |



Powered by data from FE fundinfo

Regional Breakdown (30 Jan 2026)

| Rank | Regions | % |
|------|-------------------------|-------|
| 1 | North America | 33.13 |
| 2 | UK | 31.27 |
| 3 | Europe | 9.55 |
| 4 | Global Emerging Markets | 9.15 |
| 5 | Asia Pacific ex Japan | 7.53 |
| 6 | Japan | 6.80 |
| 7 | Cash & Cash Equivalents | 1.58 |
| 8 | International | 0.99 |
| | | |
| | | |



Powered by data from FE fundinfo

Sector Breakdown (31 Jan 2026)

| Rank | Sectors | % |
|------|------------------------|-------|
| 1 | Financials | 16.37 |
| 2 | Industrials | 13.33 |
| 3 | Information Technology | 11.83 |
| 4 | Consumer Discretionary | 9.30 |
| 5 | Health Care | 8.84 |
| 6 | Consumer Staples | 7.13 |
| 7 | Communications | 6.20 |
| 8 | Materials | 3.61 |
| 9 | Money Market | 3.00 |
| 10 | Others | 20.39 |



Powered by data from FE fundinfo

Top Holdings (30 Jan 2026)

| Rank | Largest Holdings | % |
|------|---|-------|
| 1 | Liontrust UK Equity Fund | 13.14 |
| 2 | IFSL Evenlode Investment Funds - Income | 7.16 |

Liontrust MA Explorer 100 S Acc

| Rank | Largest Holdings | % |
|------|--|------|
| 3 | Invesco UK Invt. Ser. - UK Growth Fund (UK) | 6.68 |
| 4 | Natixis Intl. Fds. (Lux) I - Loomis Sayles US Growth Eq. Fd. | 6.67 |
| 5 | JOHCM UK - Dynamic | 6.59 |
| 6 | HSBC Index Tracker Investment Funds - American Index | 6.58 |
| 7 | Artemis Smart GARP Global Emerging Markets | 5.48 |
| 8 | Ftgf Putnam Us Large Cap Value Fund | 5.22 |
| 9 | Brown Advisory Funds Plc - Beutel Goodman US Value Fund | 4.89 |
| 10 | BlackRock European Dynamic Fund | 4.34 |