

Janus Henderson European Mid and Large Cap I Acc

What is the Fund's objective?

The Fund aims to provide capital growth over the long term. Performance target: To outperform the FTSE World Europe Ex UK Index, after the deduction of charges, over any 5 year period.

Cumulative Performance



	3m	6m	1yr	3yrs	5yrs
Janus Henderson European Mid and Large Cap I Acc	+4.3	+5.5	+18.9	+35.9	+53.3
Europe Excluding UK	+4.6	+8.4	+21.2	+38.8	+45.3
Rank within sector	63 / 92	64 / 91	56 / 89	54 / 85	39 / 75
Quartile	3	3	3	3	3

Fund Information

Sector	Europe Excluding UK
Asset Class	Equity
Launch Date	01-Jul-2001
Fund Size	£746.1m / \$1,003.2m (29-Dec-2025)
Fund Manager	Marc Scharzt

How does FE fundinfo rate this fund?

FE fundinfo Crown Rating



Risk Score

114

Investment Details

Initial Charge	n/a
Annual Charges	0.75%
Note to charges	n/a
Minimum Initial Investment	£ 3,000,000
Minimum Additional Investment	£ 10,000
Dividend Policy	Sep 01 (Final)

Prices

Unit Type	ACC
Mid	914.50(GBX)
Price Date	31 Dec 2025
Yield	1.40

Codes

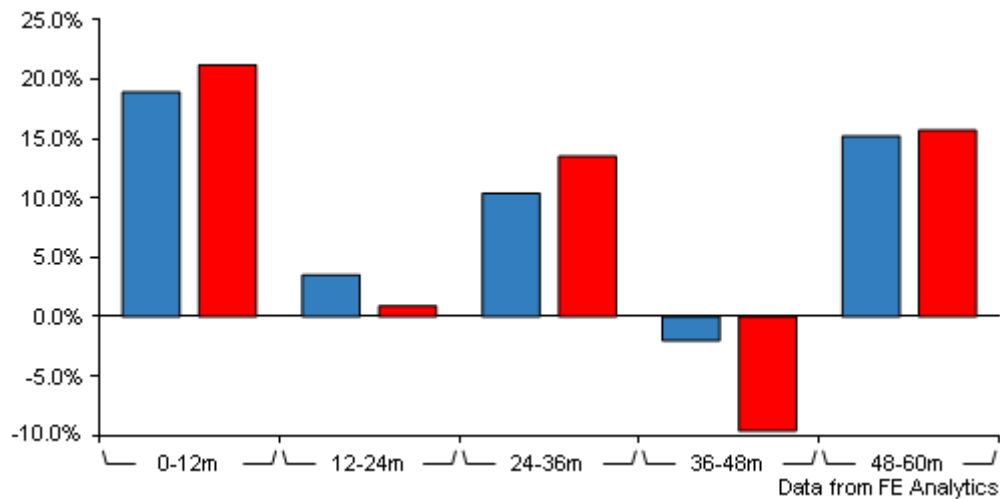
Citicode	N204
SEDOL	3061769
ISIN	GB0030617699

Contact Details

Address	201 Bishopsgate, London, United Kingdom, EC2M 3AE
Telephone numbers	44 (0)20 7818 1819 (Fax Number) 44 (0)20 7818 1818 (Main Number)
Website	www.janushenderson.com

Janus Henderson European Mid and Large Cap I Acc

Discrete Performance

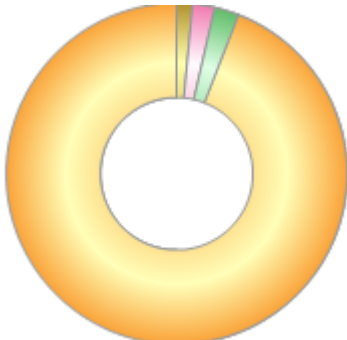


	0-12m	12m-24m	24m-36m	36m-48m	48m-60m
Janus Henderson					
European Mid and Large Cap I Acc	+18.9	+3.5	+10.4	-2.0	+15.2
Europe Excluding UK	+21.2	+0.9	+13.5	-9.6	+15.7
Rank within sector	56 / 89	18 / 87	74 / 85	16 / 81	52 / 75
Quartile	3	1	4	1	3

All prices in Pence Sterling (GBX) unless otherwise specified. Price total return performance figures are calculated on a bid price to bid price basis (mid to mid for OEICs) with net income (dividends) reinvested. Performance figures are shown in Pound Sterling (GBP).

Asset Allocation (30 Nov 2025)

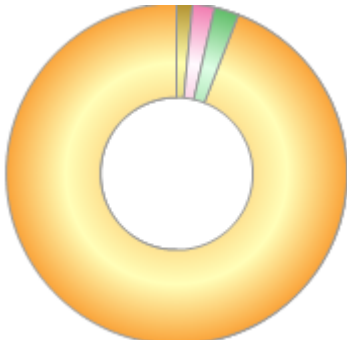
Rank	Asset Classes	%
1	European Equities	94.09
2	UK Equities	2.27
3	Money Market	2.12
4	Asia Pacific Equities	1.53



Powered by data from FE fundinfo

Regional Breakdown (30 Nov 2025)

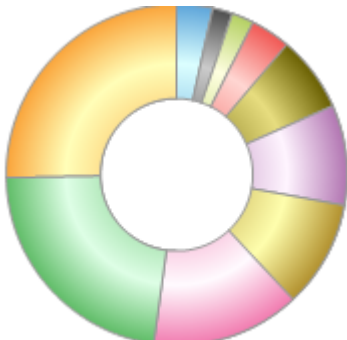
Rank	Regions	%
1	Europe	94.09
2	United Kingdom	2.27
3	Cash	2.12
4	Pacific Region	1.53



Powered by data from FE fundinfo

Sector Breakdown (30 Nov 2025)

Rank	Sectors	%
1	Financials	25.31
2	Industrials	22.55
3	Health Care	14.12
4	Technology	10.17
5	Consumer Discretionary	9.48
6	Consumer Staples	7.24
7	Energy	3.78
8	Cash	2.12
9	Telecommunications	1.88
10	Others	3.35



Powered by data from FE fundinfo

Top Holdings (30 Nov 2025)

Rank	Largest Holdings	%
1	Erste Group Bank	4.27
2	ASR Nederland	3.76

Janus Henderson European Mid and Large Cap I Acc

Rank	Largest Holdings	%
3	Banco Bilbao Vizcaya Argentaria	3.52
4	Novartis	2.85
5	FinecoBank Banca Fineco	2.55
6	Danone	2.40
7	Knorr-Bremse	2.36
8	Verisure	2.33
9	Roche	2.31
10	Argenx	2.23