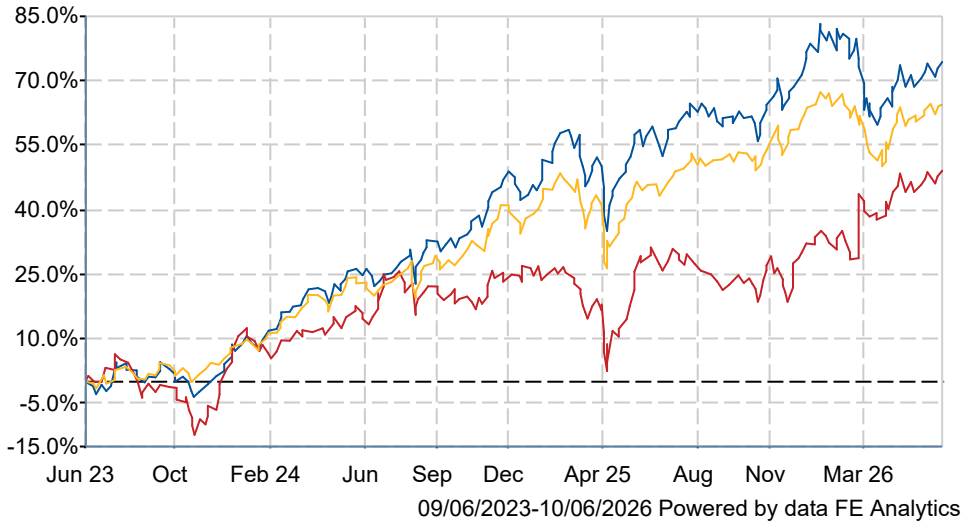


## Polar Capital Global Financials Trust PLC Ord 5P

### What is the Fund's objective?

To generate a growing dividend income together with capital appreciation by investing in a global portfolio of financials stocks.


### Cumulative Performance



	3m	6m	1yr	3yrs	5yrs
■ Polar Capital Global Financials Trust PLC Ord 5P	+5.8	+3.4	+9.4	+74.3	+52.0
■ Financials & Financial Innovation	+6.8	+16.4	+15.2	+49.0	+26.0
■ NAV	+6.0	+3.1	+12.9	+64.3	+65.2
Rank within sector	1 / 1	1 / 1	1 / 1	1 / 1	1 / 1
Quartile	1	1	1	1	1

Sector	Financials & Financial Innovation
Asset Class	Equity
Launch Date	01-Jul-2013
Fund Size	£357.5m / \$478.9m (10-Jun-2026)
Fund Manager	Nick Brind George Barrow Tom Dorner

### How does FE fundinfo rate this fund?

FE fundinfo Crown Rating	
Risk Score	120

### Investment Details

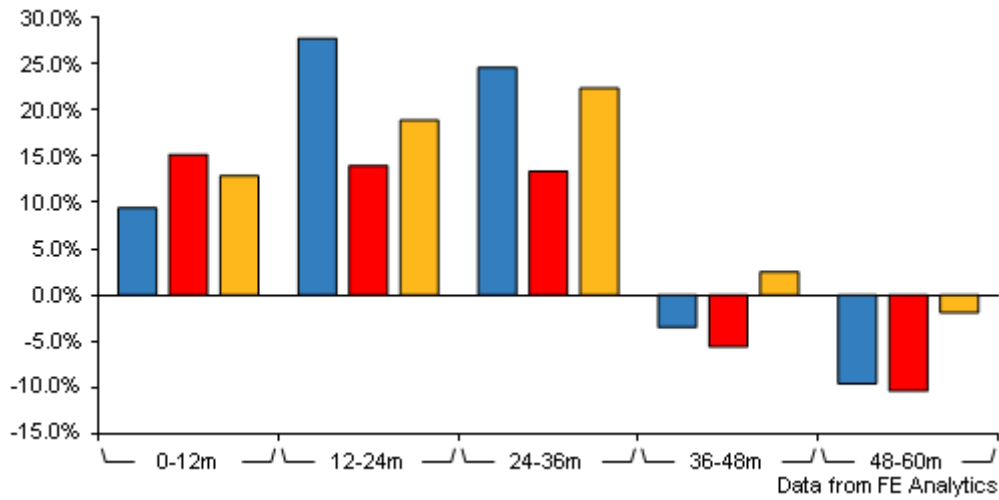
Initial Charge	0.00%
Annual Charges	0.70%
Note to charges	Initial Charges: max.;
Minimum Initial Investment	n/a
Minimum Additional Investment	n/a
Dividend Policy	n/a
Management Contract	n/a

### Prices

Unit Type	INC
Mid	227.00(GBX)
Price Date	10 Jun 2026
Yield	0.00
Discount	-5.35
Diluted NAV	
- Estimate	238.25
- Last Published	238.25 (09-Jun-2026)

# Polar Capital Global Financials Trust PLC Ord 5P

## Discrete Performance



	0-12m	12m-24m	24m-36m	36m-48m	48m-60m
Polar Capital Global					
■ Financials Trust PLC Ord 5P	+9.4	+27.8	+24.6	-3.5	-9.6
■ Financials & Financial Innovation	+15.2	+14.0	+13.4	-5.6	-10.4
■ NAV	+12.9	+18.9	+22.4	+2.5	-1.9
Rank within sector	1 / 1	1 / 1	1 / 1	1 / 1	1 / 1
Quartile	1	1	1	1	1

All prices in Pence Sterling (GBX) unless otherwise specified. Price total return performance figures are calculated using closing mid prices and with net income (dividends) reinvested. NAV total return performance figures are calculated using fully diluted (where applicable) daily estimated NAV figures from Thomson Financial Datastream. Performance figures are shown in Pound Sterling (GBP).

## Codes

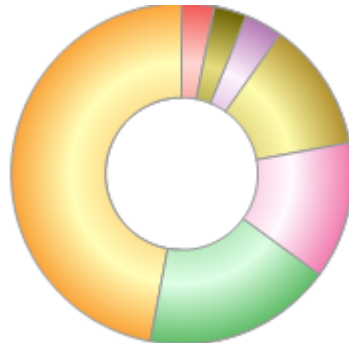
Citicode	JFOC
SEDOL	B9XQT11
ISIN	GB00B9XQT119
TIDM	PCFT

## Contact Details

Address	16 Palace Street, London, United Kingdom, SW1E 5JD
Telephone numbers	+44 (0) 20 7227 2799 (Fax Number) +44 (0) 20 7227 2700 (Main Number)
Website	<a href="http://www.polarcapital.co.uk">www.polarcapital.co.uk</a>
Email	<a href="mailto:investor-relations@polarcapital.co.uk">investor-relations@polarcapital.co.uk</a>

## Asset Allocation (30 Apr 2026)

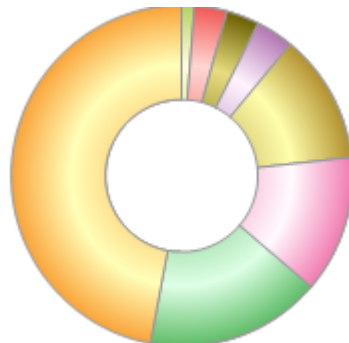
Rank	Asset Classes	%
1	North American Equities	47.10
2	European Equities	17.90
3	Asia Pacific ex Japan Equities	13.00
4	UK Equities	12.30
5	Japanese Equities	3.60
6	American Emerging Equities	3.10
7	International Equities	3.10



Powered by data from FE fundinfo

## Regional Breakdown (30 Apr 2026)

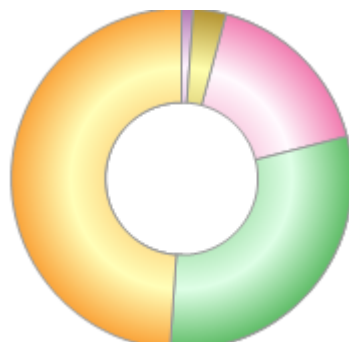
Rank	Regions	%
1	North America	47.10
2	Europe	16.70
3	Asia Pac (ex-Japan)	13.00
4	UK	12.30
5	Japan	3.60
6	Fixed Income	3.10
7	Latin America	3.10
8	Eastern Europe	1.20



Powered by data from FE fundinfo

## Sector Breakdown (30 Apr 2026)

Rank	Sectors	%
1	Banks	48.90
2	Financial Services	30.10
3	Insurance	16.80
4	Fixed Income	3.10
5	REITs	1.10



Powered by data from FE fundinfo

## Top Holdings (30 Apr 2026)

Rank	Largest Holdings	%
1	JPMORGAN CHASE & CO.	6.60
2	BANK OF AMERICA CORPORATION	3.90

## Polar Capital Global Financials Trust PLC Ord 5P

Rank	Largest Holdings	%
3	ROYAL BANK OF CANADA	3.40
4	MASTERCARD INCORPORATED	2.90
5	BANK OF NEW YORK MELLON CORPORATION (THE)	2.80
6	CITIGROUP INC.	2.80
7	MORGAN STANLEY	2.60
8	VISA INC.	2.40
9	BANCO SANTANDER, S.A.	2.20
10	IG GROUP HOLDINGS PLC	2.20