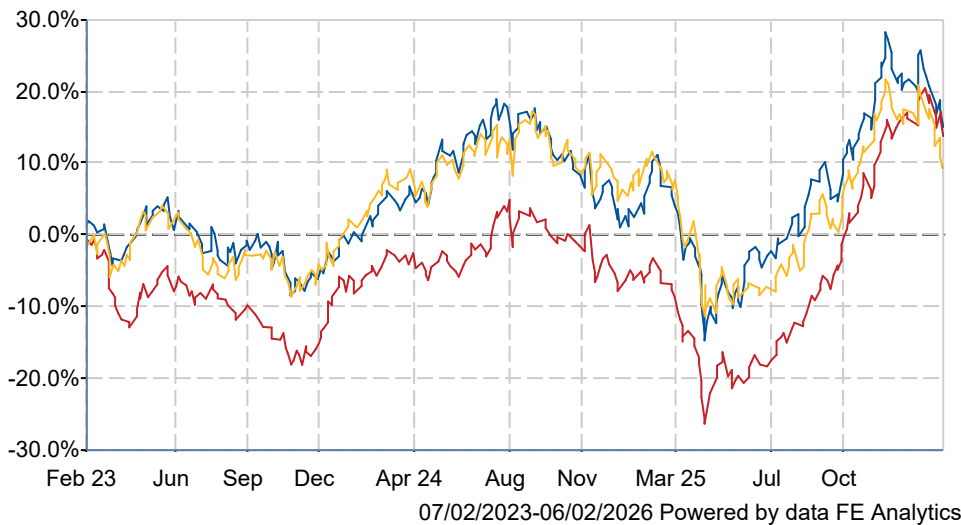





Worldwide Healthcare Trust PLC Ord 2.5P

What is the Fund's objective?

To invest in the global healthcare sector with the objective of achieving a high level of capital growth. In order to achieve its investment objective, the Company invests worldwide in a diversified portfolio of shares in pharmaceutical and biotechnology companies and related securities in the healthcare sector. It uses gearing, and derivative transactions to enhance returns and mitigate risk. Performance is measured against the MSCI World Health Care Index (net total return, sterling adjusted).

Cumulative Performance




	3m	6m	1yr	3yrs	5yrs
 Worldwide Healthcare Trust PLC Ord 2.5P	-1.1	+12.7	+3.5	+14.1	-4.5
 Biotechnology & Healthcare	+7.1	+29.8	+18.0	+12.1	-3.0
 NAV	-2.0	+12.0	-2.4	+10.1	+2.0
Rank within sector	7 / 7	6 / 7	6 / 7	5 / 7	3 / 7
Quartile	4	4	4	3	2

Fund Information

Sector	Biotechnology & Healthcare
Asset Class	Equity
Launch Date	28-Apr-1995
Fund Size	£1,362.7m / \$1,856.2m (06-Feb-2026)
Fund Manager	Sven H Borho Trevor Polischuk

How does FE fundinfo rate this fund?

FE fundinfo Crown Rating	
Risk Score	166

Investment Details

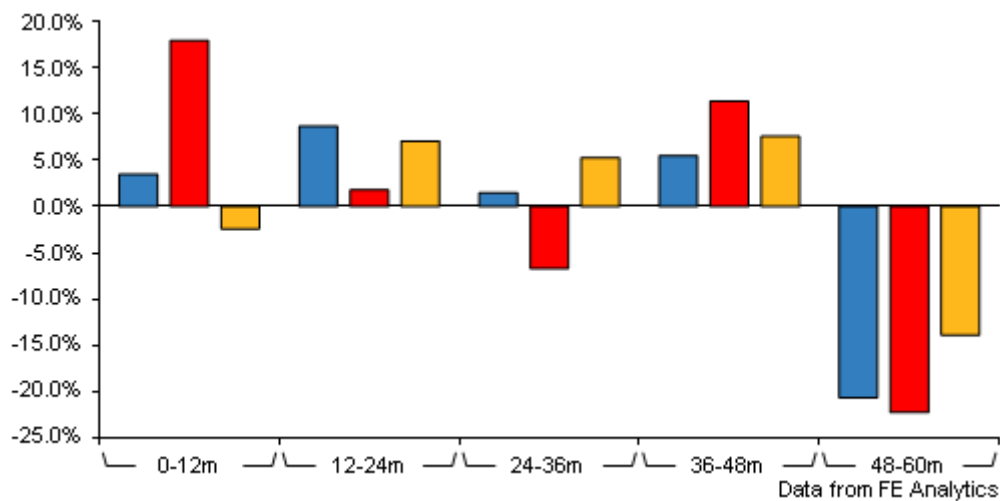
Initial Charge	0.00%
Annual Charges	0.80%
Note to charges	n/a
Minimum Initial Investment	n/a
Minimum Additional Investment	n/a
Dividend Policy	n/a

Management Contract

Frostrow Capital LLP receives a periodic fee equal to 0.30% p.a. of the Company's market capitalisation up to GBP 150 million of such market capitalisation and 0.20% per annum on market capitalisation in excess of GBP 150 million plus a fixed amount equal to GBP 50,000 p.a. Investment Manager is also entitled to the payment of a performance fee. The performance fee amounts to 16.5% of any out-performance of the NAV over the benchmark index. At each quarterly calculation date any performance fee payable is based on the lower of: (i) the cumulative out-performance of the investment portfolio over the benchmark index as at the quarter end date; and (ii) the cumulative out-performance of the investment portfolio over the benchmark as at the corresponding quarter end date in the previous year.

Worldwide Healthcare Trust PLC Ord 2.5P

Discrete Performance



	0-12m	12m-24m	24m-36m	36m-48m	48m-60m
<div></div> Worldwide Healthcare Trust PLC Ord 2.5P	+3.5	+8.7	+1.5	+5.5	-20.7
<div></div> Biotechnology & Healthcare	+18.0	+1.8	-6.7	+11.4	-22.3
<div></div> NAV	-2.4	+7.1	+5.3	+7.6	-13.9
Rank within sector	6 / 7	3 / 7	2 / 7	6 / 7	4 / 7
Quartile	4	2	1	4	2

All prices in Pence Sterling (GBX) unless otherwise specified. Price total return performance figures are calculated using closing mid prices and with net income (dividends) reinvested. NAV total return performance figures are calculated using fully diluted (where applicable) daily estimated NAV figures from Thomson Financial Datastream. Performance figures are shown in Pound Sterling (GBP).

Prices

Unit Type	INC
Mid	355.50(GBX)
Price Date	06 Feb 2026
Yield	0.68
Discount	-6.02
Diluted NAV	
- Estimate	378.27
- Last Published	378.27 (05-Feb-2026)

Codes

Citicode	FD95
SEDOL	BN455J5
ISIN	GB00BN455J50
TIDM	WWH

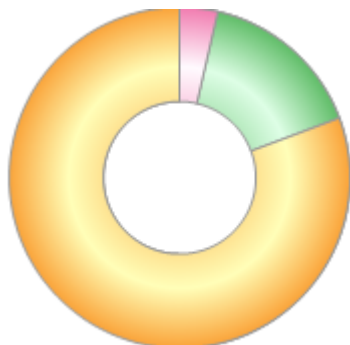
Contact Details

Address	Frostrow Capital LLP, 25 Southampton Buildings, London, WC2A 1AL
Telephone numbers	0203 008 4910 (Main Number)
Website	www.frostrow.com
Email	grant.challis@frostrow.com

Worldwide Healthcare Trust PLC Ord 2.5P

Asset Allocation (31 Dec 2025)

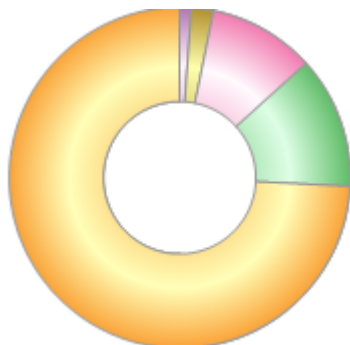
Rank	Asset Classes	%
1	Listed Equities	80.70
2	Equity Swaps	15.70
3	Unquoteds	3.60



Powered by data from FE fundinfo

Regional Breakdown (31 Dec 2025)

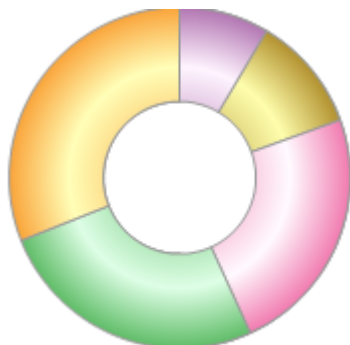
Rank	Regions	%
1	North America	74.20
2	Europe	12.50
3	China / Hong Kong	10.10
4	Japan	2.10
5	India	1.10



Powered by data from FE fundinfo

Sector Breakdown (31 Dec 2025)

Rank	Sectors	%
1	Pharmaceutical	31.00
2	Life Sciences Tools & Services	25.80
3	Healthcare Equipment / Supplies	23.70
4	Swap Baskets	11.00
5	Healthcare Providers / Services	8.50



Powered by data from FE fundinfo

Top Holdings (31 Dec 2025)

Rank	Largest Holdings	%
1	Eli Lilly	11.60
2	Biotech M&A Target Swap	11.00

Worldwide Healthcare Trust PLC Ord 2.5P

Rank	Largest Holdings	%
3	Boston Scientific	7.60
4	AstraZeneca	7.50
5	Edwards Lifesciences	5.20
6	Intuitive Surgical	5.00
7	Stryker	3.90
8	Jiangsu Hengrui Pharmaceuticals	3.80
9	Argenx	3.30
10	Alnylam Pharmaceuticals	2.90