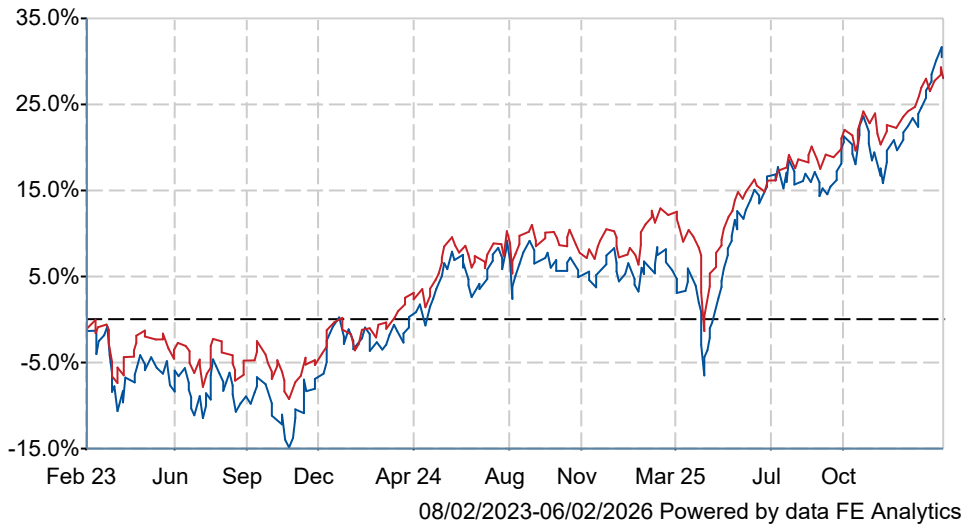




## Premier Miton UK Value Opportunities B Acc GBP

### What is the Fund's objective?

The objective of the Fund is to provide capital growth over the long-term, being five years or more. Five years is also the minimum recommended period for holding shares in this Fund. This does not mean that the Fund will achieve the objective over this, or any other, specific time period and there is a risk of loss to the original capital invested.

### Cumulative Performance




	3m	6m	1yr	3yrs	5yrs
 Premier Miton UK Value Opportunities B Acc GBP	+8.2	+11.8	+20.3	+31.3	+33.3
 IA UK All Companies	+3.7	+8.1	+13.3	+28.5	+44.5
Rank within sector	14 / 211	78 / 211	72 / 209	102 / 203	127 / 195
Quartile	1	2	2	2	3

### Fund Information

Sector	IA UK All Companies
Asset Class	Equity
Launch Date	25-Mar-2013
Fund Size	£242.2m / \$329.9m (06-Feb-2026)
Fund Manager	Matthew Tillett Michael Shrives

### How does FE fundinfo rate this fund?

FE fundinfo Crown Rating	
Risk Score	121

### Investment Details

Initial Charge	n/a
Annual Charges	0.75%
Note to charges	n/a
Minimum Initial Investment	£ 1,000
Minimum Additional Investment	£ 1,000
Dividend Policy	Jun 01 (Final), Dec 01

### Prices

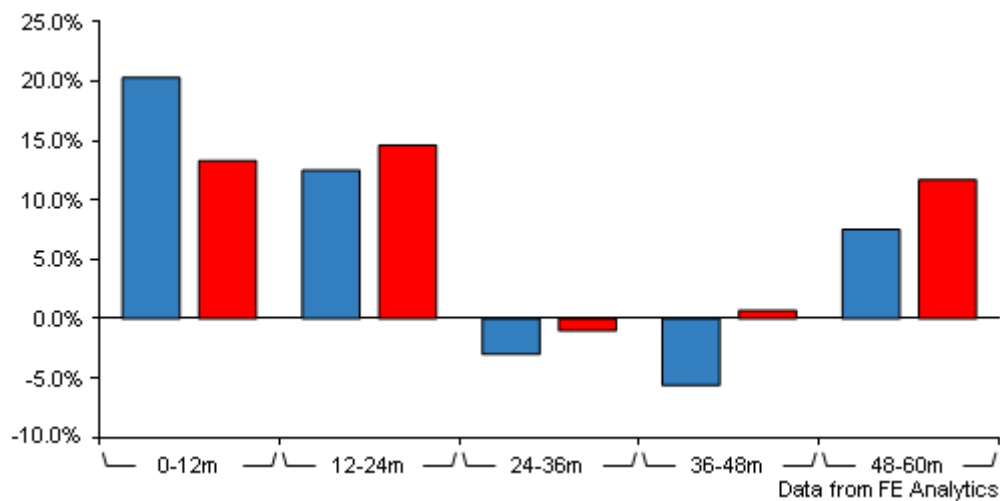
Unit Type	ACC
Mid	321.20(GBX)
Price Date	06 Feb 2026
Yield	2.10

### Codes

Citicode	ICDB
SEDOL	B8QW1M4
ISIN	GB00B8QW1M42

# Premier Miton UK Value Opportunities B Acc GBP

## Discrete Performance



	0-12m	12m-24m	24m-36m	36m-48m	48m-60m
<div></div> Premier Miton UK Value Opportunities B Acc GBP	+20.3	+12.5	-3.0	-5.6	+7.5
<div></div> IA UK All Companies	+13.3	+14.6	-1.0	+0.7	+11.7
Rank within sector	72 / 209	141 / 204	158 / 203	165 / 200	145 / 195
Quartile	2	3	4	4	3

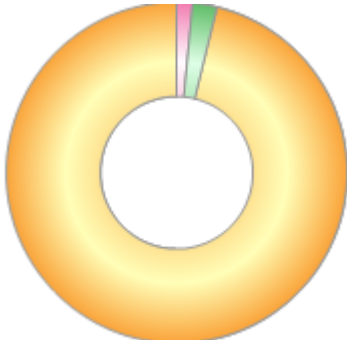
All prices in Pence Sterling (GBX) unless otherwise specified. Price total return performance figures are calculated on a bid price to bid price basis (mid to mid for OEICs) with net income (dividends) reinvested. Performance figures are shown in Pound Sterling (GBP).

## Contact Details

Address	Premier Fund Managers Ltd, Eastgate Court, High Street, Guildford, Surrey, GU1 3DE
Telephone numbers	01483 306090 (Main Number)
Website	<a href="http://www.premiermiton.com">www.premiermiton.com</a>
Email	<a href="mailto:info@premiermiton.com">info@premiermiton.com</a>

Asset Allocation (31 Dec 2025)

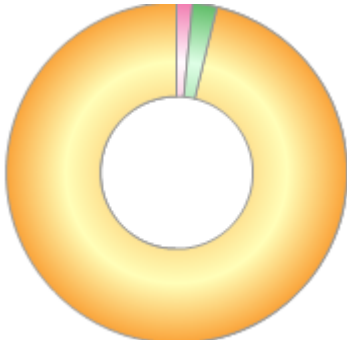
Rank	Asset Classes	%
1	UK Equities	96.15
2	Others	2.31
3	Cash & Cash Equivalents	1.54



Powered by data from FE fundinfo

Regional Breakdown (31 Dec 2025)

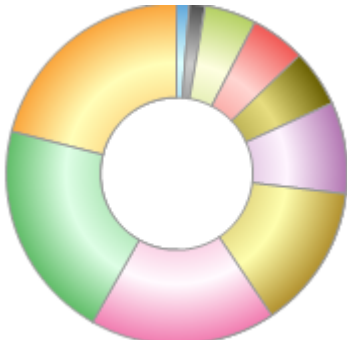
Rank	Regions	%
1	UK	96.15
2	Europe ex UK	2.31
3	Money Market	1.54



Powered by data from FE fundinfo

Sector Breakdown (31 Dec 2025)

Rank	Sectors	%
1	Industrials	20.98
2	Consumer Discretionary	20.81
3	Financials	17.59
4	Materials	13.74
5	Real Estate	8.67
6	Energy	5.37
7	Health Care	5.21
8	Consumer Staples	4.92
9	Cash & Cash Equivalents	1.54
10	Others	1.17



Powered by data from FE fundinfo

Top Holdings (31 Dec 2025)

Rank	Largest Holdings	%
1	Capital	4.36
2	Coats Group	3.91

# Premier Miton UK Value Opportunities B Acc GBP

Rank	Largest Holdings	%
3	Grafton Group	3.89
4	Breedon Group	3.81
5	JD Sports Fashion	3.77
6	Essentra	3.73
7	Jet2	3.49
8	Man Group	3.20
9	Helical	3.02
10	Shaftesbury Capital	3.00