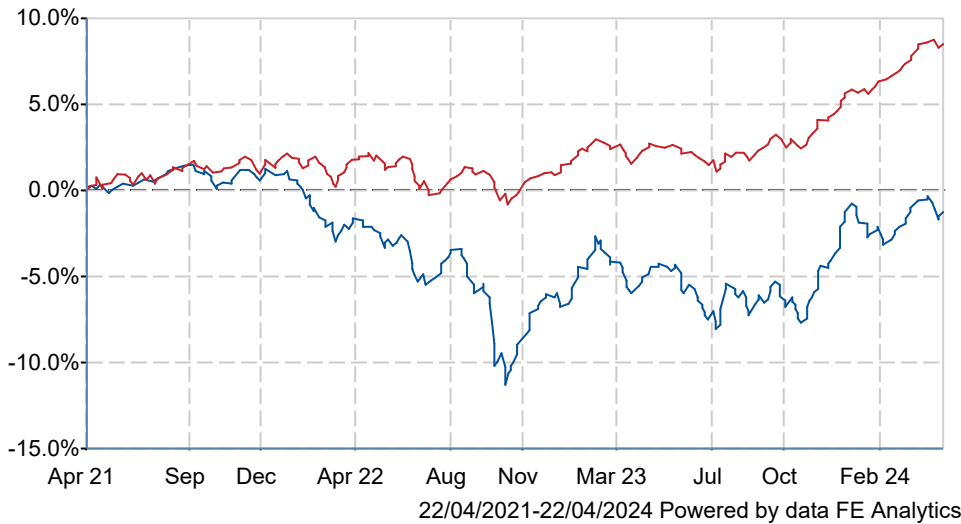


IFSL Church House Tenax Absolute Return Strategies A Acc

What is the Fund's objective?

The Fund has an absolute return strategy objective, aiming to achieve positive returns over rolling twelve-month periods at low levels of volatility.

Cumulative Performance



	3m	6m	1yr	3yrs	5yrs
IFSL Church House Tenax Absolute Return Strategies A Acc	+1.3	+6.7	+3.4	-1.3	+4.1
IA Targeted Absolute Return	+2.5	+5.8	+5.8	+8.5	+15.8


Fund Information

Sector	IA Targeted Absolute Return
Asset Class	Mixed Asset
Launch Date	22-Nov-2007
Fund Size	£193.3m / \$238.7m (22-Apr-2024)
Fund Manager	Jeremy Wharton James Mahon

How does FE fundinfo rate this fund?

Alpha Manager Rating Jeremy Wharton

FE fundinfo Crown Rating 

AFI  

Risk Score **44**

Investment Details

Initial Charge	0.00%
Annual Charges	1.19%
Note to charges	n/a
Minimum Initial Investment	£ 5,000
Minimum Additional Investment	£ 5,000
Dividend Policy	Apr 01, Oct 01 (Final)

Prices

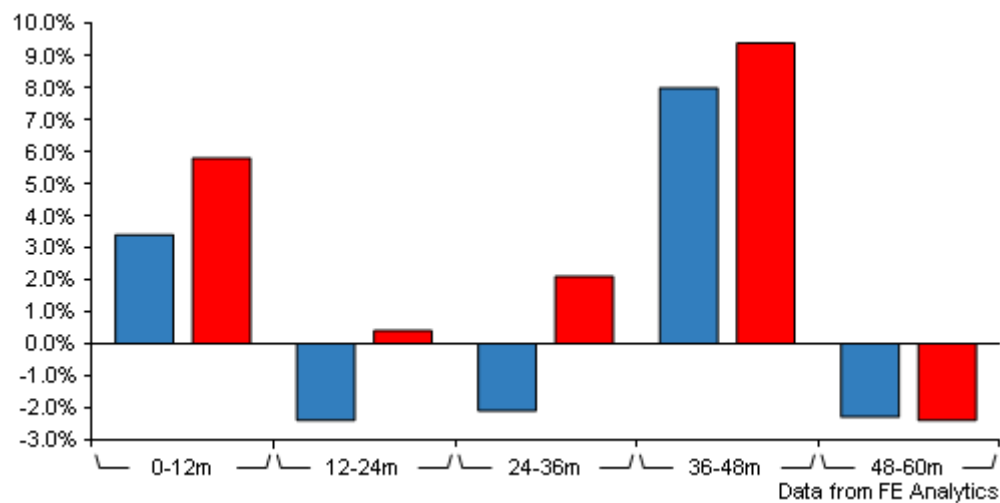
Unit Type	ACC
Mid	161.40[GBX]
Price Date	22 Apr 2024
Yield	3.37

Codes

Citicode	ARC2
SEDOL	B28KSG7
ISIN	GB00B28KSG75

IFSL Church House Tenax Absolute Return Strategies A Acc

Discrete Performance



	0-12m	12m-24m	24m-36m	36m-48m	48m-60m
IFSL Church House					
Tenax Absolute Return Strategies A Acc	+3.4	-2.4	-2.1	+8.0	-2.3
IA Targeted Absolute Return	+5.8	+0.4	+2.1	+9.4	-2.4

All prices in Pence Sterling (GBX) unless otherwise specified. Price total return performance figures are calculated on a bid price to bid price basis (mid to mid for OEICs) with net income (dividends) reinvested. Performance figures are shown in Pound Sterling (GBP).

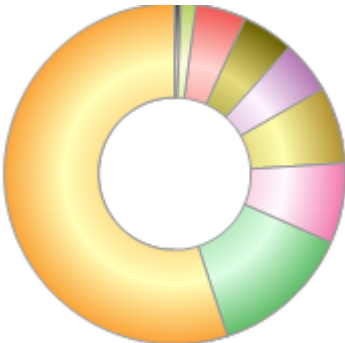
Contact Details

Address	50 Grosvenor Street, Mayfair, London, United Kingdom, W1K 3HW
Telephone numbers	020 7534 9870 (Main Number)
Website	www.ch-investments.co.uk
Email	enquiries@church-house.co.uk

IFSL Church House Tenax Absolute Return Strategies A Acc

Asset Allocation (29 Feb 2024)

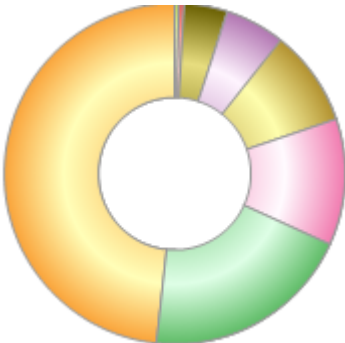
Rank	Asset Classes	%
<div></div> 1	Fixed Interest	55.00
<div></div> 2	Money Market	13.40
<div></div> 3	UK Equity	7.60
<div></div> 4	Convertibles	7.30
<div></div> 5	Infrastructure	5.00
<div></div> 6	Property / Real	4.90
<div></div> 7	International Equity	4.80
<div></div> 8	Treasury/T-Bills	1.40
<div></div> 9	Index-Linked	0.60



Powered by data from FE fundinfo

Sector Breakdown (30 Sep 2023)

Rank	Sectors	%
<div></div> 1	Fixed Interest	48.30
<div></div> 2	FRN (AAA)	19.90
<div></div> 3	UK Equity	12.00
<div></div> 4	Convertibles	9.10
<div></div> 5	Infrastructure	5.70
<div></div> 6	Property / Real	4.10
<div></div> 7	Index-Linked	0.50
<div></div> 8	Cash Deposits	0.40



Powered by data from FE fundinfo