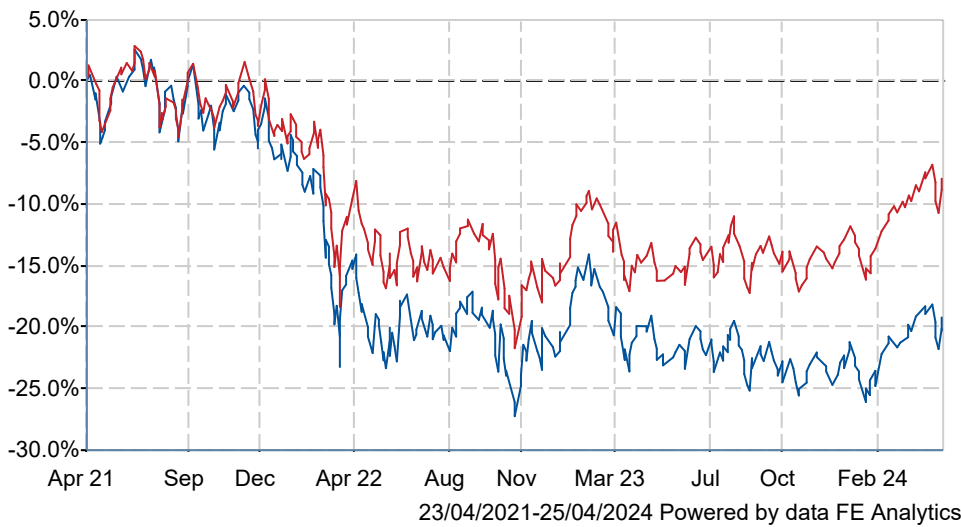




# abrdn Emerging Markets Equity I Acc

## What is the Fund's objective?

To generate growth over the long term (5 years or more) by investing in emerging markets equities (company shares). Performance Target: To achieve the return of the MSCI Emerging Markets Index, plus 3% per annum over three rolling year periods (before charges). The Performance Target is the level of performance that the management team hopes to achieve for the fund. There is however no certainty or promise that they will achieve the Performance Target. The ACD believes this is an appropriate target for the fund based on the investment policy of the fund and the constituents of the index.

## Cumulative Performance



	3m	6m	1yr	3yrs	5yrs
 abrdn Emerging Markets Equity I Acc	+4.8	+6.3	+3.1	-20.3	+1.8
 Global Emerging Markets	+6.3	+9.1	+8.9	-8.8	+12.5
Rank within sector	56 / 69	54 / 67	59 / 66	49 / 58	43 / 47
Quartile	4	4	4	4	4

## Fund Information

Sector	Global Emerging Markets
Asset Class	Equity
Launch Date	16-Mar-1987
Fund Size	£594.0m / \$743.6m (25-Apr-2024)
Fund Manager	Global Emerging Markets Equity

## How does FE fundinfo rate this fund?

FE fundinfo Crown Rating	
AFI	NO
Risk Score	115

## Other ratings

Morningstar Analyst Rating	
----------------------------	---

## Investment Details

Initial Charge	0.00%
Annual Charges	0.75%
Note to charges	n/a
Minimum Initial Investment	£ 1,000,000
Minimum Additional Investment	£ 50,000
Dividend Policy	Aug 01 (Final)

## Prices

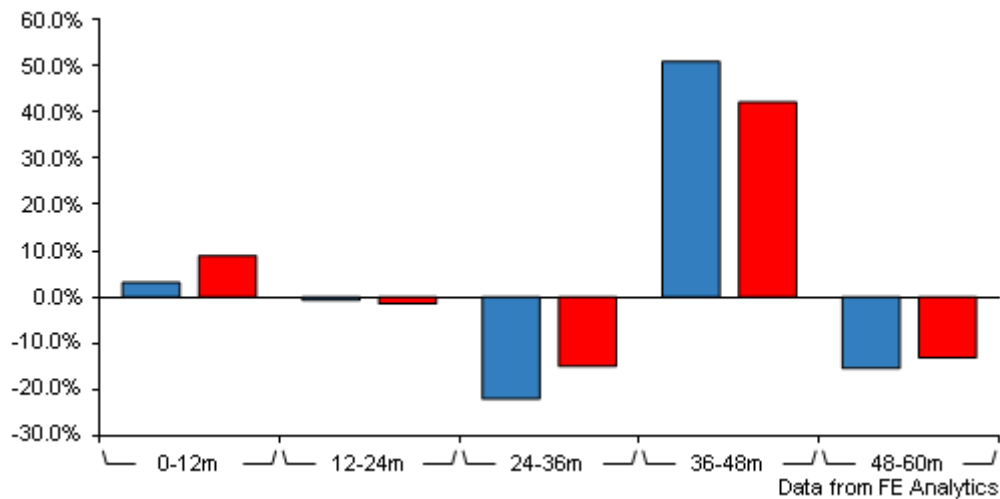
Unit Type	ACC
Mid	826.95(GBX)
Price Date	25 Apr 2024
Yield	1.40

## Codes

Citicode	ZY91
SEDOL	3322756
ISIN	GB0033227561

# abrdn Emerging Markets Equity I Acc

## Discrete Performance



	0-12m	12m-24m	24m-36m	36m-48m	48m-60m
abrdn Emerging Markets Equity I Acc	+3.1	-0.7	-22.1	+51.0	-15.4
Global Emerging Markets	+8.9	-1.5	-15.0	+42.2	-13.2
Rank within sector	59 / 66	23 / 63	48 / 58	11 / 52	33 / 47
Quartile	4	2	4	1	3

All prices in Pence Sterling (GBX) unless otherwise specified. Price total return performance figures are calculated on a bid price to bid price basis (mid to mid for OEICs) with net income (dividends) reinvested. Performance figures are shown in Pound Sterling (GBP).

## Contact Details

**Address** Aberdeen Standard Fund Managers Limited, Bow Bells House, 1 Bread Street, London, EC4M 9HH

**Telephone numbers** 0345 113 6966 (Main Number)

**Website** [www.aberdeenstandard.com](http://www.aberdeenstandard.com)

# abrdn Emerging Markets Equity I Acc

## Asset Allocation (29 Mar 2024)

Rank	Asset Classes	%
1	Chinese Equities	21.22
2	Indian Equities	17.02
3	Taiwanese Equities	13.90
4	South Korean Equities	11.91
5	Mexican Equities	8.09
6	Brazilian Equities	6.64
7	Indonesian Equities	3.72
8	Hong Kong Equities	3.14
9	Dutch Equities	2.47
10	Others	11.89



Powered by data from FE fundinfo

## Regional Breakdown (29 Mar 2024)

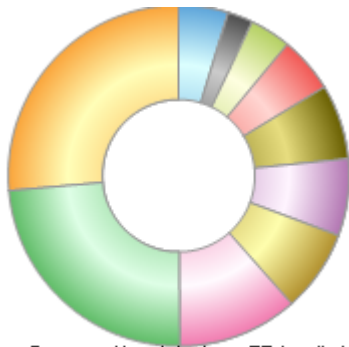
Rank	Regions	%
1	China	21.22
2	India	17.02
3	Taiwan	13.90
4	Korea	11.91
5	Mexico	8.09
6	Brazil	6.64
7	Indonesia	3.72
8	Hong Kong	3.14
9	Netherlands	2.47
10	Others	11.89



Powered by data from FE fundinfo

## Sector Breakdown (29 Mar 2024)

Rank	Sectors	%
1	Information Technology	26.39
2	Financials	23.69
3	Consumer Discretionary	11.42
4	Communications	7.78
5	Industrials	7.27
6	Consumer Staples	7.07
7	Materials	5.30
8	Energy	3.92
9	Utilities	2.44
10	Others	4.72



Powered by data from FE fundinfo

## Top Holdings (29 Mar 2024)

Rank	Largest Holdings	%
1	Taiwan Semiconductor Manufacturing	9.67
2	Samsung Electronic	7.25

# abrdn Emerging Markets Equity I Acc

Rank	Largest Holdings	%
3	Tencent	5.72
4	Alibaba Group Holding	3.61
5	HDFC Bank	2.51
6	Power Grid Corp of India	2.44
7	SBI Life Insurance	2.35
8	Southern Copper	2.01
9	JSC Kaspi.Kz	2.01
10	Totalenergies	1.98