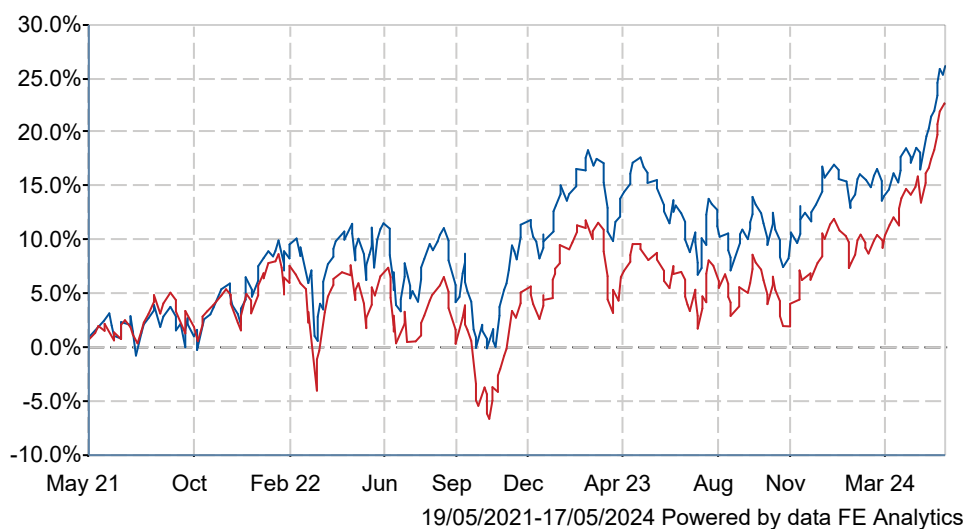


FTF Martin Currie UK Equity Income W Acc

What is the Fund's objective?

FTF MARTIN CURRIE UK EQUITY INCOME FUND aims to generate an income that is higher than that of the FTSE All-Share Index, together with investment growth over a three to five-year period after all fees and costs are deducted. The Fund invests at least two thirds (but typically significantly more) in the shares of companies listed on the London Stock Exchange. These companies are incorporated/domiciled in the UK or which have significant business operations in the UK. The investment team uses detailed company research and draws on extensive UK equity investment experience to build a portfolio of companies of any size and from any industry sector in the FTSE All-Share Index that they believe offer the potential to grow in value over time.

Cumulative Performance





	3m	6m	1yr	3yrs	5yrs
FTF Martin Currie UK Equity Income W Acc	+8.8	+12.6	+9.9	+25.5	+34.2
IA UK Equity Income	+11.5	+15.0	+13.3	+22.0	+32.4
Rank within sector	70 / 77	66 / 77	69 / 77	32 / 75	35 / 74
Quartile	4	4	4	2	2

Fund Information

Sector	IA UK Equity Income
Asset Class	Equity
Launch Date	31-Aug-1987
Fund Size	£935.7m / \$1,188.7m (17-May-2024)
Fund Manager	Ben Russon Colin Morton Will Bradwell Joanne Rands

How does FE fundinfo rate this fund?

Alpha Manager Rating	Ben Russon Joanne Rands
FE fundinfo Crown Rating	
AFI	
Risk Score	104

Other ratings

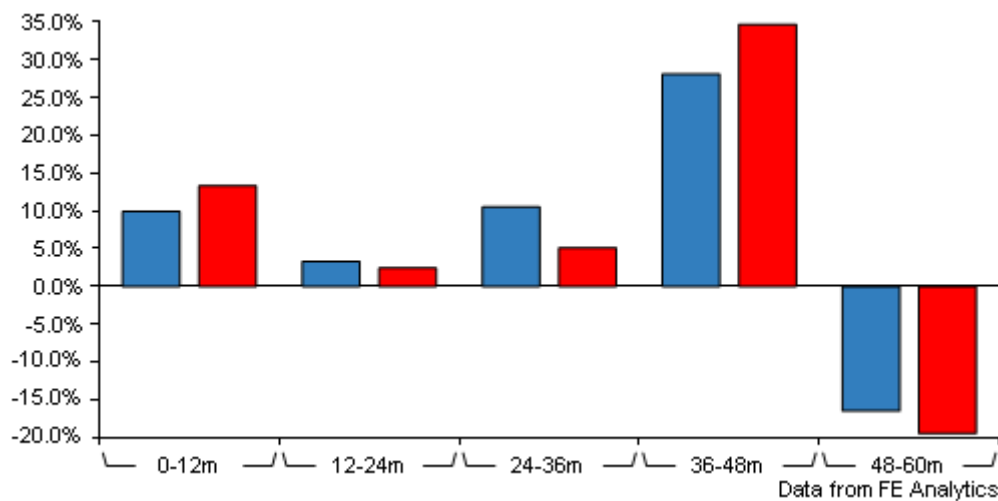
Morningstar Analyst Rating	
----------------------------	---

Investment Details

Initial Charge	n/a
Annual Charges	0.45%
Note to charges	Initial Charges: max.; Annual Management Charges: max.;
Minimum Initial Investment	£ 1,000
Minimum Additional Investment	£ 250
Dividend Policy	Mar 31, Jun 30, Sep 30 (Final), Dec 31

FTF Martin Currie UK Equity Income W Acc

Discrete Performance



	0-12m	12m-24m	24m-36m	36m-48m	48m-60m
FTF Martin Currie UK Equity Income W Acc	+9.9	+3.3	+10.5	+28.1	-16.5
IA UK Equity Income	+13.3	+2.4	+5.1	+34.7	-19.5
Rank within sector	69 / 77	32 / 77	12 / 75	59 / 74	27 / 74
Quartile	4	2	1	4	2

All prices in Pence Sterling (GBX) unless otherwise specified. Price total return performance figures are calculated on a bid price to bid price basis (mid to mid for OEICs) with net income (dividends) reinvested. Performance figures are shown in Pound Sterling (GBP).

Prices

Unit Type	ACC
Mid	282.30(GBX)
Price Date	17 May 2024
Yield	4.29

Codes

Citicode	G25P
SEDOL	B7DRD63
ISIN	GB00B7DRD638

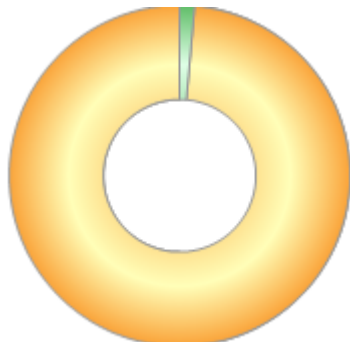
Contact Details

Address	Cannon Place, 78 Cannon Street, London, EC4N 6HL
Telephone numbers	0800 305 306 (Main Number)
Website	www.franklintempleton.co.uk/
Email	enquiries@franklintempleton.co.uk

FTF Martin Currie UK Equity Income W Acc

Asset Allocation (30 Apr 2024)

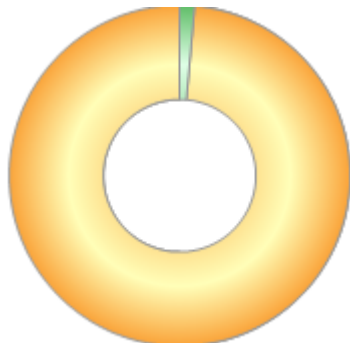
Rank	Asset Classes	%
1	UK Equities	98.56
2	Money Market	1.44



Powered by data from FE fundinfo

Regional Breakdown (30 Apr 2024)

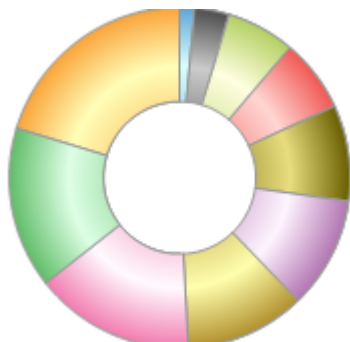
Rank	Regions	%
1	United Kingdom	98.56
2	Cash & Cash Equivalents	1.44



Powered by data from FE fundinfo

Sector Breakdown (30 Apr 2024)

Rank	Sectors	%
1	Consumer Staples	20.33
2	Financials	15.29
3	Industrials	15.17
4	Consumer Discretionary	11.44
5	Energy	10.56
6	Health Care	9.07
7	Basic Materials	6.93
8	Utilities	6.51
9	Real Estate	3.26
10	Cash & Cash Equivalents	1.44



Powered by data from FE fundinfo

Top Holdings (30 Apr 2024)

Rank	Largest Holdings	%
1	SHELL PLC	5.54
2	BP PLC	5.09

FTF Martin Currie UK Equity Income W Acc

Rank	Largest Holdings	%
3	UNILEVER PLC	5.00
4	ASTRAZENECA PLC	4.33
5	RIO TINTO PLC	3.43
6	BRITISH AMERICAN TOBACCO PLC	3.35
7	GSK PLC	3.18
8	RELX PLC	3.01
9	NATIONAL GRID PLC	2.92
10	IMPERIAL BRANDS PLC	2.57