

# Scottish Widows European Growth A Acc

## What is the Fund's objective?

To provide capital growth through investment in a broad portfolio of shares in Continental European companies. The benchmark index for the Fund is the MSCI Europe ex UK Index (the "Index"). The Investment Adviser seeks to outperform the Index by 1.25%\* per annum on a rolling 3 year basis, before deduction of fees. The MSCI Europe ex UK Index has been selected as an appropriate benchmark as it provides a representation of the returns of securities in the European equities market, excluding the UK. For further information on this fund's policy and objectives, please refer to the Key Investor Information Document or the Prospectus. These documents can be accessed via the following link:

## Cumulative Performance



	3m	6m	1yr	3yrs	5yrs
Scottish Widows European Growth A Acc	+8.5	+15.3	+15.4	+25.3	+50.8
IA Europe Excluding UK	+7.1	+14.3	+14.5	+22.6	+55.3
Rank within sector	42 / 143	46 / 143	60 / 143	74 / 136	84 / 129
Quartile	2	2	2	3	3

## Fund Information

Sector	IA Europe Excluding UK
Asset Class	Equity
Launch Date	28-Jun-1985
Fund Size	£735.2m / \$933.9m (30-Apr-2024)
Fund Manager	Philipp Kauer

## How does FE fundinfo rate this fund?

FE fundinfo Crown Rating	
AFI	NO
Risk Score	110

## Investment Details

Initial Charge	5.00%
Annual Charges	0.80%
Note to charges	n/a
Minimum Initial Investment	£ 1,000
Minimum Additional Investment	£ 100
Dividend Policy	Dec 01 (Final)

## Prices

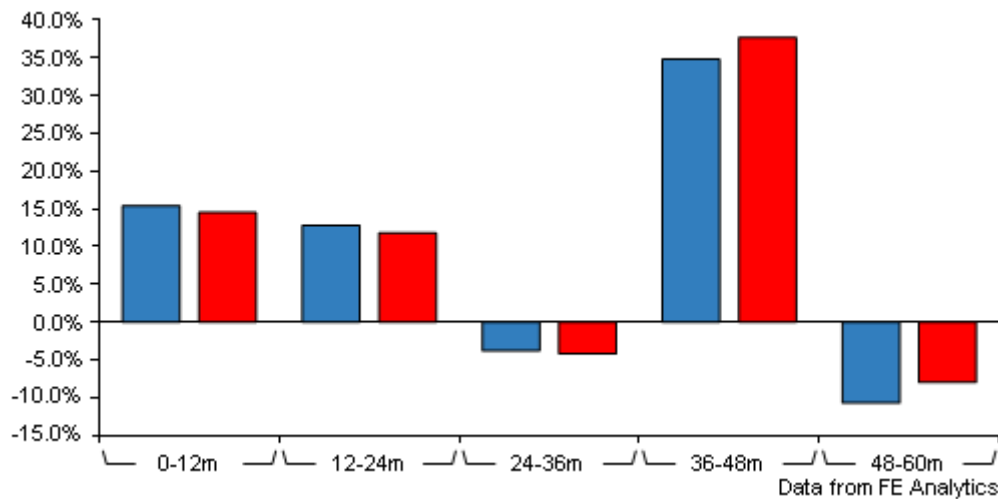
Unit Type	ACC
Mid	938.90(GBX)
Price Date	17 May 2024
Yield	2.50

## Codes

Citicode	TS61
SEDOL	3161090
ISIN	GB0031610909

# Scottish Widows European Growth A Acc

## Discrete Performance



	0-12m	12m-24m	24m-36m	36m-48m	48m-60m
Scottish Widows European Growth A Acc	+15.4	+12.8	-3.8	+34.8	-10.7
IA Europe Excluding UK	+14.5	+11.8	-4.2	+37.7	-8.0
Rank within sector	60 / 143	72 / 142	68 / 136	85 / 131	78 / 129
Quartile	2	3	2	3	3

All prices in Pence Sterling (GBX) unless otherwise specified. Price total return performance figures are calculated on a bid price to bid price basis (mid to mid for OEICs) with net income (dividends) reinvested. Performance figures are shown in Pound Sterling (GBP).

## Contact Details

Address Scottish Widows, PO Box 24171, 69 Morrison Street, Edinburgh, EH3 1HL

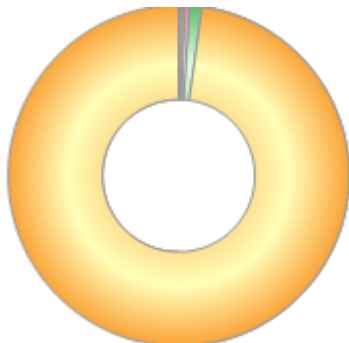
Telephone numbers MN (Main Number)

Website [www.scottishwidows.co.uk](http://www.scottishwidows.co.uk)

# Scottish Widows European Growth A Acc

## Asset Allocation (28 Mar 2024)

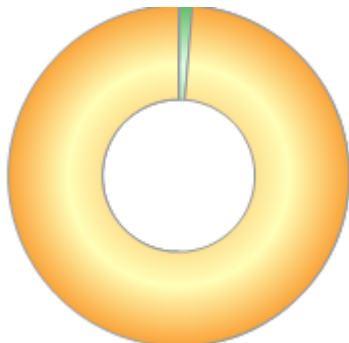
Rank	Asset Classes	%
1	Europe ex UK Equities	97.88
2	North American Equities	1.15
3	Money Market	0.36
4	Futures	0.34
5	Property Shares	0.27



Powered by data from FE fundinfo

## Regional Breakdown (28 Mar 2024)

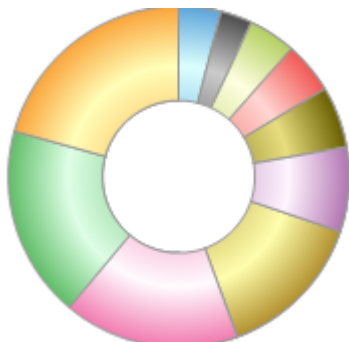
Rank	Regions	%
1	Europe ex-UK	98.80
2	North America	1.15
3	United Kingdom	0.05



Powered by data from FE fundinfo

## Sector Breakdown (28 Mar 2024)

Rank	Sectors	%
1	Financials	20.70
2	Health Care	18.18
3	Industrials	16.73
4	Consumer Discretionary	14.20
5	Technology	8.01
6	Consumer Staples	5.83
7	Energy	4.87
8	Basic Materials	4.54
9	Telecommunications	2.95
10	Others	3.99



Powered by data from FE fundinfo

## Top Holdings (28 Mar 2024)

Rank	Largest Holdings	%
1	NOVO NORDISK CLASS B DKK0.1	5.92
2	NOVARTIS AG CHF0.50 (REGISTERED)	3.57

# Scottish Widows European Growth A Acc

Rank	Largest Holdings	%
3	ASML HOLDING NV EUR0.09 (POST SPLIT)	3.45
4	ROCHE HOLDING AG NPV	3.18
5	ALLIANZ SE NPV (REGISTERED)	2.59
6	L'OREAL SA EUR0.20	2.31
7	NESTLE SA CHF0.10 (REGISTERED)	2.24
8	ZURICH INSURANCE GROUP AG CHF0.10 (REGISTERED)	2.14
9	SANOFI EUR2	2.06
10	UNICREDIT SPA NPV	1.95