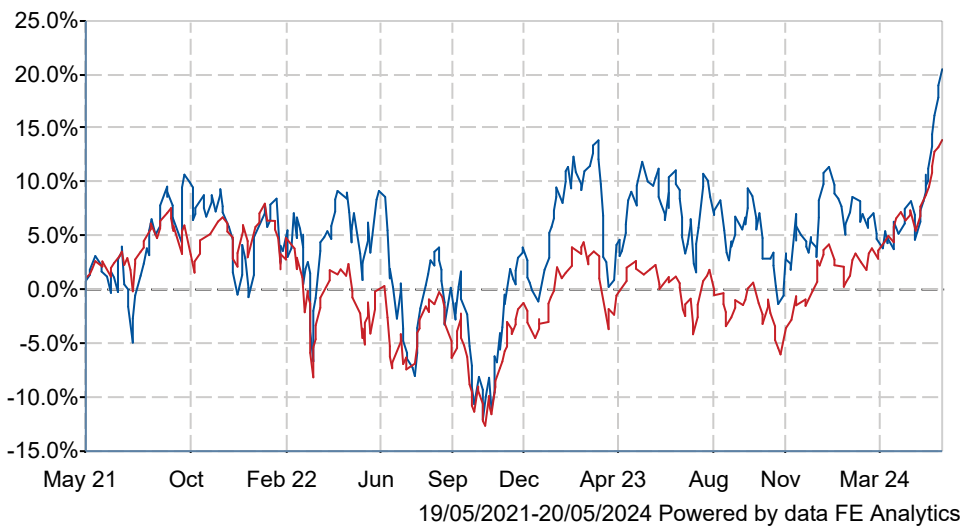


# abrdn UK Value Equity Platform 1 Acc GBP

## What is the Fund's objective?

To generate growth over the long term (5 years or more) by investing in UK equities (company shares). Performance Target: To achieve the return of the FTSE 350 ex Investment Trusts (Equally Weighted) Index, plus 3% per annum over rolling five year periods (before charges). There is no certainty or promise that the Performance Target will be achieved. Performance Comparator: The Investment Association UK All Companies Equity Sector Average. The FTSE 350 ex Investment Trusts (Equally Weighted) Index (the "Index") is a representative index of the UK stock market. The Investment Association UK All Companies Equity Sector Average (the "Sector") is a representative group of investment funds with a focus on UK equities.

## Cumulative Performance



	3m	6m	1yr	3yrs	5yrs
abrdn UK Value Equity Platform 1 Acc GBP	+11.7	+12.4	+8.9	+18.1	+40.5
IA UK All Companies	+9.1	+14.3	+10.7	+12.7	+27.7
Rank within sector	36 / 234	187 / 234	180 / 232	106 / 224	27 / 214
Quartile	1	4	4	2	1

## Fund Information

Sector	IA UK All Companies
Asset Class	Equity
Launch Date	29-Sep-2005
Fund Size	£330.0m / \$419.2m (31-Mar-2024)
Fund Manager	Wesley McCoy

## How does FE fundinfo rate this fund?

FE fundinfo Crown Rating	
AFI	NO
Risk Score	149

## Investment Details

Initial Charge	0.00%
Annual Charges	1.00%
Note to charges	Initial Charges: max.;
Minimum Initial Investment	£ 1,000,000
Minimum Additional Investment	£ 50,000
Dividend Policy	Apr 30, Oct 30 (Final)

## Prices

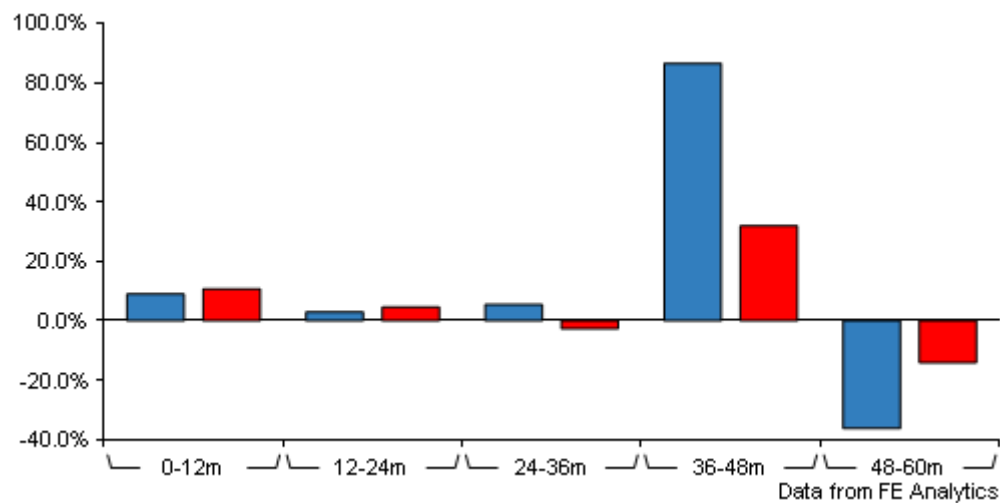
Unit Type	ACC
Mid	151.30(GBX)
Price Date	20 May 2024
Yield	2.15

## Codes

Citicode	10GY
SEDOL	B7LK223
ISIN	GB00B7LK2232

# abrdn UK Value Equity Platform 1 Acc GBP

## Discrete Performance



	0-12m	12m-24m	24m-36m	36m-48m	48m-60m
abrdn UK Value Equity Platform 1 Acc GBP	+8.9	+2.9	+5.4	+86.7	-36.3
IA UK All Companies	+10.7	+4.5	-2.6	+31.9	-14.1
Rank within sector	180 / 232	139 / 230	72 / 224	2 / 219	214 / 214
Quartile	4	3	2	1	4

All prices in Pence Sterling (GBX) unless otherwise specified. Price total return performance figures are calculated on a bid price to bid price basis (mid to mid for OEICs) with net income (dividends) reinvested. Performance figures are shown in Pound Sterling (GBP).

## Contact Details

**Address** Aberdeen Standard Fund Managers Limited, Bow Bells House, 1 Bread Street, London, EC4M 9HH

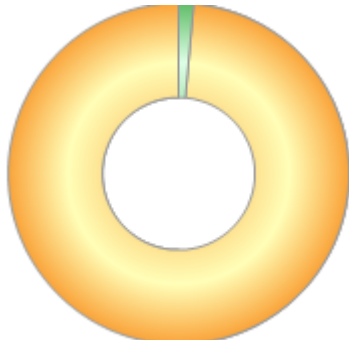
**Telephone numbers** 0345 113 6966 (Main Number)

**Website** [www.aberdeenstandard.com](http://www.aberdeenstandard.com)

# abrdn UK Value Equity Platform 1 Acc GBP

## Asset Allocation (31 Mar 2024)

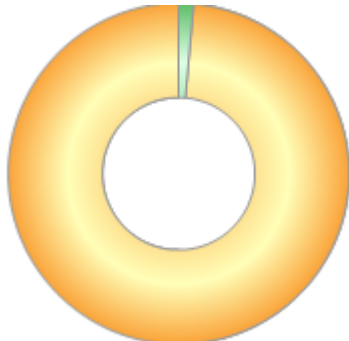
Rank	Asset Classes	%
1	UK Equities	98.60
2	Cash	1.40



Powered by data from FE fundinfo

## Regional Breakdown (31 Mar 2024)

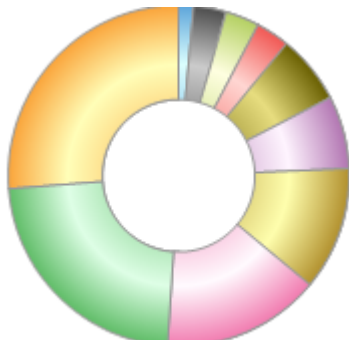
Rank	Regions	%
1	UK	98.60
2	Cash	1.40



Powered by data from FE fundinfo

## Sector Breakdown (31 Mar 2024)

Rank	Sectors	%
1	Financials	26.20
2	Consumer Discretionary	22.70
3	Industrials	15.00
4	Communication Services	11.70
5	Materials	6.90
6	Information Technology	6.50
7	Consumer Staples	3.20
8	Real Estate	3.20
9	Other	3.10
10	Cash	1.40



Powered by data from FE fundinfo

## Top Holdings (31 Mar 2024)

Rank	Largest Holdings	%
1	Just Group PLC	6.90
2	Barclays PLC	6.40

# abrdn UK Value Equity Platform 1 Acc GBP

Rank	Largest Holdings	%
3	Alfa Financial Software Holdings PLC	5.10
4	Future PLC	4.70
5	888 Holdings PLC	4.60
6	Vodafone Group PLC	4.50
7	Senior PLC	4.30
8	Kier Group PLC	4.30
9	Mitchells & Butlers PLC	3.90
10	Glencore PLC	3.80