



# Pictet Indian Equities I GBP

## What is the Fund's objective?

This compartment aims to invest directly or indirectly in transferable securities, (described in further detail below) issued by companies and institutions that are based in India or have their main activity in India.

## Cumulative Performance



	3m	6m	1yr	3yrs	5yrs
 Pictet Indian Equities I GBP	+3.3	+14.6	+29.3	+44.2	+72.8
 IA India/Indian Subcontinent	+3.4	+15.1	+30.0	+55.1	+74.4
Rank within sector	10 / 24	12 / 24	14 / 23	17 / 23	14 / 20
Quartile	2	2	3	3	3

## Fund Information

Sector	IA India/Indian Subcontinent
Asset Class	Equity
Launch Date	26-Jun-1996
Fund Size	£485.6m / \$616.9m (17-May-2024)
Fund Manager	Prashant Kothari Mr. Venkatesh Sanjeevi

## How does FE fundinfo rate this fund?

FE fundinfo Crown Rating	
AFI	NO
Risk Score	92

## Investment Details

Initial Charge	5.00%
Annual Charges	0.70%
Note to charges	Initial Charges: max.;
Minimum Initial Investment	£ 1,000,000
Minimum Additional Investment	n/a
Dividend Policy	Dec 03 (Final)

## Prices

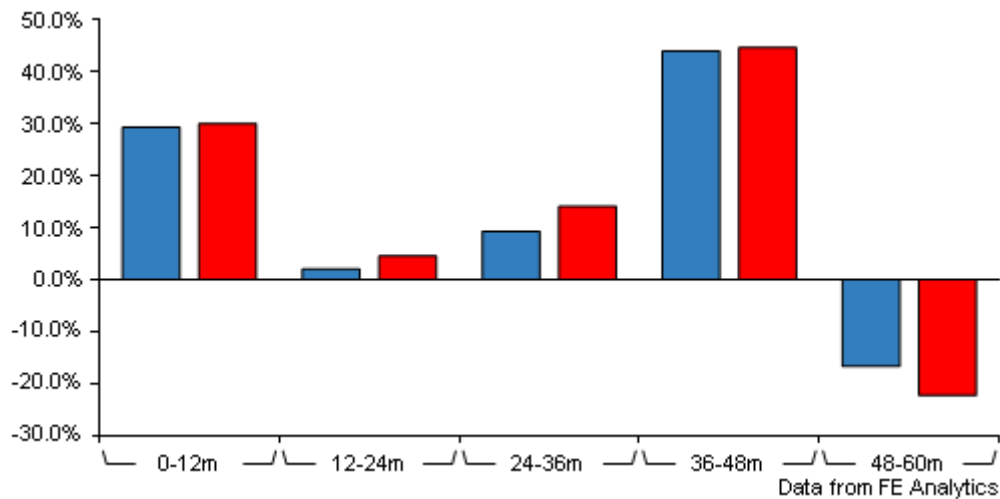
Unit Type	ACC
Mid	777.15(GBP)
Price Date	17 May 2024
Yield	n/a

## Codes

Citicode	F4QR
SEDOL	B96TPQ4
ISIN	LU0859479155

# Pictet Indian Equities I GBP

## Discrete Performance



	0-12m	12m-24m	24m-36m	36m-48m	48m-60m
<div></div> Pictet Indian Equities I GBP	+29.3	+2.0	+9.3	+44.0	-16.7
<div></div> IA India/Indian Subcontinent	+30.0	+4.5	+14.1	+44.7	-22.3
Rank within sector	14 / 23	15 / 23	22 / 23	9 / 22	7 / 20
Quartile	3	3	4	2	2

All prices in Pence Sterling (GBX) unless otherwise specified. Price total return performance figures are calculated on a bid price to bid price basis (mid to mid for OEICs) with net income (dividends) reinvested. Performance figures are shown in Pound Sterling (GBP).

## Contact Details

Address 15, Avenue J.F. Kennedy,  
Luxembourg, L-1855

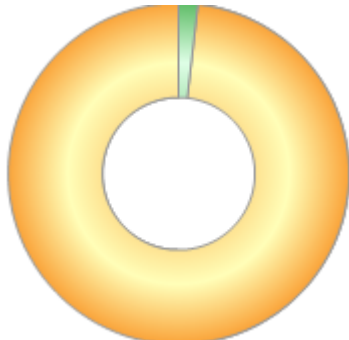
Telephone numbers MN (Main Number)

Website [www.assetmanagement.pictet](http://www.assetmanagement.pictet)

# Pictet Indian Equities I GBP

## Asset Allocation (30 Apr 2024)

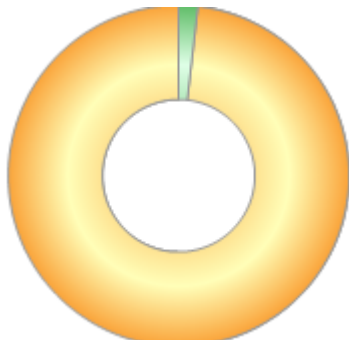
Rank	Asset Classes	%
1	India Equities	98.20
2	Cash	1.80



Powered by data from FE fundinfo

## Regional Breakdown (30 Apr 2024)

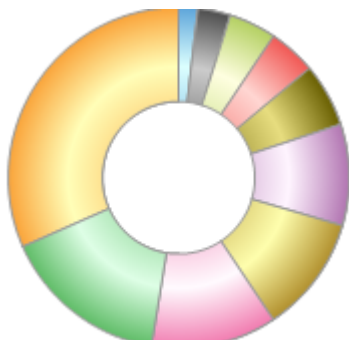
Rank	Regions	%
1	India	98.20
2	Cash	1.80



Powered by data from FE fundinfo

## Sector Breakdown (30 Apr 2024)

Rank	Sectors	%
1	Financials	31.63
2	Consumer Discretionary	15.80
3	Information Technology	11.85
4	Health Care	11.10
5	Consumer Staples	9.62
6	Materials	6.03
7	Industrials	4.54
8	Unassigned Group	4.53
9	Real Estate	3.10
10	Cash	1.80



Powered by data from FE fundinfo

## Top Holdings (30 Apr 2024)

Rank	Largest Holdings	%
1	ICICI BANK LIMITED	8.91
2	HDFC BANK LIMITED	7.62

# Pictet Indian Equities I GBP

Rank	Largest Holdings	%
3	INFOSYS LTD	5.81
4	SBI LIFE INSURANCE COMPANY LIMITED	4.82
5	ZOMATO PRIVATE LTD	4.33
6	MAKEMYTRIP LTD	4.17
7	Kei Industries Ltd.	4.12
8	AXIS BANK LIMITED	4.07
9	HCL TECHNOLOGIES	3.95
10	EICHER MOTORS	3.69