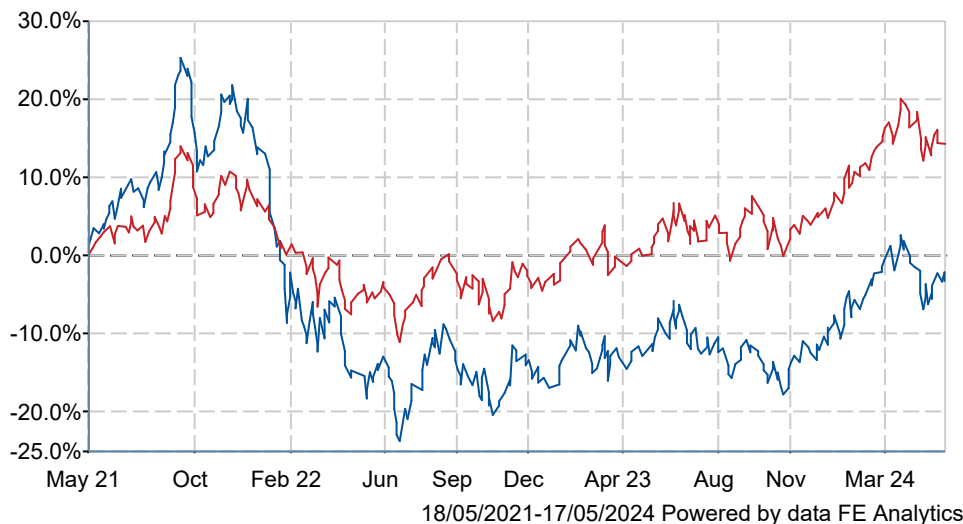


JPM Japan C Acc

What is the Fund's objective?

To provide capital growth over the long-term (5- 10 years) by investing at least 80% of the Fund's assets in the shares of Japanese companies.

Cumulative Performance




	3m	6m	1yr	3yrs	5yrs
JPM Japan C Acc	-1.0	+8.6	+6.8	-2.1	+24.8
IA Japan	+0.8	+8.8	+10.6	+15.5	+37.9
Rank within sector	84 / 102	65 / 102	77 / 102	81 / 98	70 / 93
Quartile	4	3	4	4	3

Fund Information

Sector	IA Japan
Asset Class	Equity
Launch Date	01-Apr-1970
Fund Size	£904.0m / \$1,148.4m (17-May-2024)
Fund Manager	Nicholas Weindling Shoichi Mizusawa Miyako Urabe

How does FE fundinfo rate this fund?

FE fundinfo Crown Rating	
AFI	NO
Risk Score	157

Other ratings

Morningstar Analyst Rating	
----------------------------	--

Investment Details

Initial Charge	0.00%
Annual Charges	0.75%
Note to charges	Initial Charges: max.;
Minimum Initial Investment	£ 5,000,000
Minimum Additional Investment	£ 100,000
Dividend Policy	Feb 01 (Final)

Prices

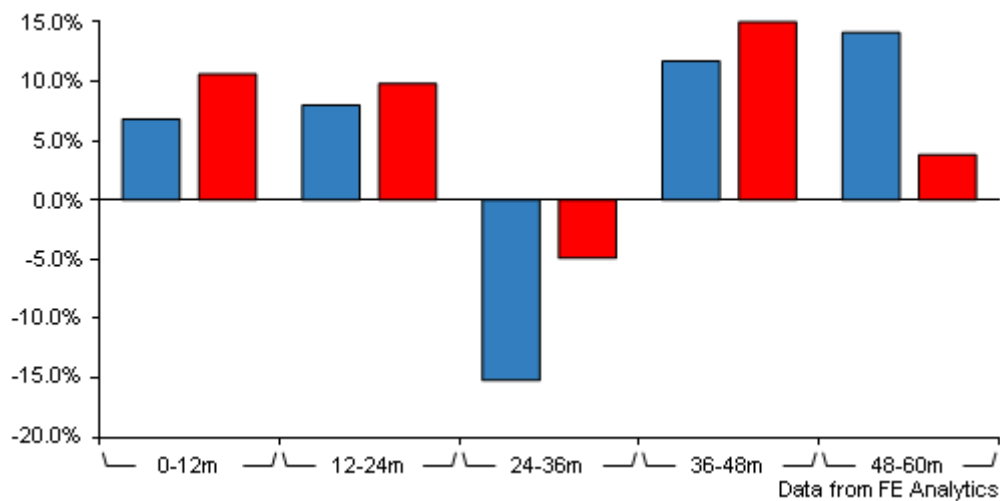
Unit Type	ACC
Mid	332.50(GBX)
Price Date	17 May 2024
Yield	0.58

Codes

Citicode	A4F6
SEDOL	B235RG0
ISIN	GB00B235RG08

JPM Japan C Acc

Discrete Performance



	0-12m	12m-24m	24m-36m	36m-48m	48m-60m
JPM Japan C Acc	+6.8	+8.0	-15.2	+11.7	+14.1
IA Japan	+10.6	+9.8	-4.9	+15.0	+3.8
Rank within sector	77 / 102	76 / 101	89 / 97	68 / 94	7 / 93
Quartile	4	3	4	3	1

All prices in Pence Sterling (GBX) unless otherwise specified. Price total return performance figures are calculated on a bid price to bid price basis (mid to mid for OEICs) with net income (dividends) reinvested. Performance figures are shown in Pound Sterling (GBP).

Contact Details

Address 60 Victoria Embankment, London, E
0JP

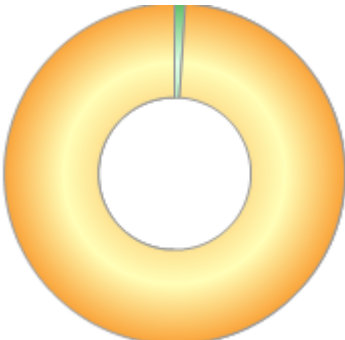
Telephone numbers +44-1268444470 (Main Number)

Website www.jpmorganassetmanagement.com

Email ifaenquiry@jpmorgan.com

Asset Allocation (31 Mar 2024)

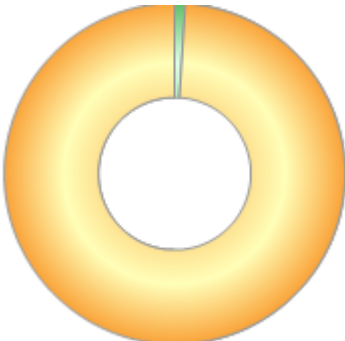
Rank	Asset Classes	%
1	Japan Equities	99.00
2	Cash	1.00



Powered by data from FE fundinfo

Regional Breakdown (31 Mar 2024)

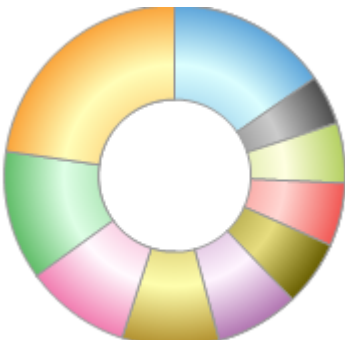
Rank	Regions	%
1	Japan	99.00
2	Cash	1.00



Powered by data from FE fundinfo

Sector Breakdown (31 Mar 2024)

Rank	Sectors	%
1	Electric Appliances	22.70
2	Information & Communication	12.30
3	Chemicals	10.00
4	Other Products	9.20
5	Services	7.90
6	Precision Instruments	6.20
7	Wholesale Trade	6.00
8	Insurance	5.70
9	Retail Trade	4.70
10	Others	15.30



Powered by data from FE fundinfo

Top Holdings (31 Mar 2024)

Rank	Largest Holdings	%
1	Keyence	5.90
2	Tokio Marine	5.70

JPM Japan C Acc

Rank	Largest Holdings	%
3	Asics	5.50
4	Hitachi	5.40
5	Tokyo Electron	5.30
6	Shin-Etsu Chemical	5.20
7	ITOCHU	4.60
8	Softbank	4.10
9	Hoya	4.00
10	Japan Exchange	3.60