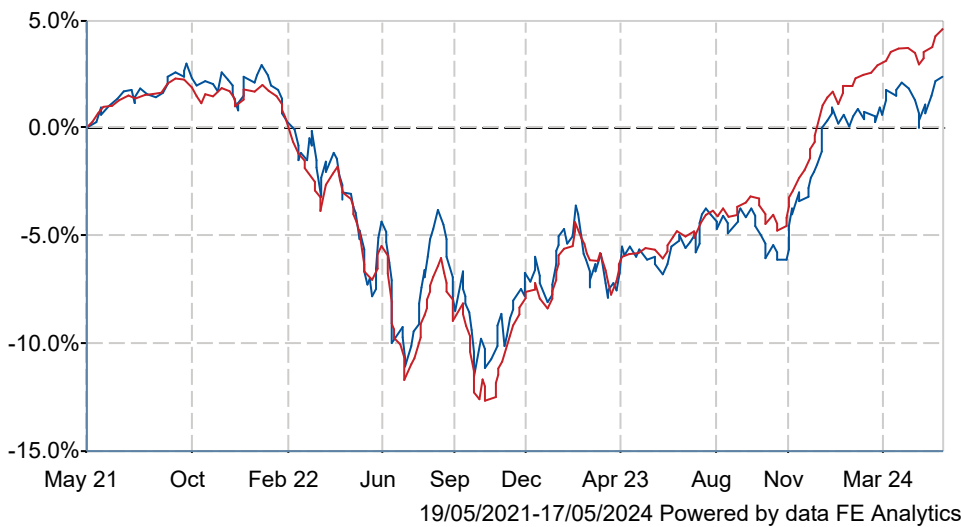


JPM Global High Yield Bond C Gr Acc

What is the Fund's objective?

To provide a high return from a diversified portfolio of Bond and other Debt Securities. The Fund will invest primarily in Bond and other Debt Securities (mainly Below InvestmentGrade securities or Unrated securities) of issuers in developed countries, primarily corporations and banks. The Fund may also invest in Bond and other Debt Securities of issuers of Emerging countries. The Fund will aim to hedge non-Sterling securities back to Sterling.

Cumulative Performance



	3m	6m	1yr	3yrs	5yrs
JPM Global High Yield Bond C Gr Acc	+1.7	+6.1	+9.3	+2.0	+15.3
IA Sterling High Yield	+1.9	+7.0	+11.0	+4.5	+16.2
Rank within sector	21 / 30	23 / 29	24 / 29	19 / 29	15 / 24
Quartile	3	4	4	3	3

Fund Information

Sector	IA Sterling High Yield
Asset Class	Fixed Interest
Launch Date	01-Sep-1999
Fund Size	£141.9m / \$180.3m (17-May-2024)
Fund Manager	Robert Cook Thomas Hauser Jeffrey Lovell

How does FE fundinfo rate this fund?

FE fundinfo Crown Rating	
AFI	NO
Risk Score	52

Investment Details

Initial Charge	0.00%
Annual Charges	0.45%
Note to charges	Initial Charges: max.;
Minimum Initial Investment	£ 5,000,000
Minimum Additional Investment	£ 100,000
Dividend Policy	Jan 01, Feb 01 (Final), Mar 01, Apr 01, May 01, Jun 01, Jul 01, Aug 01, Sep 01, Oct 01, Nov 01, Dec 01

Prices

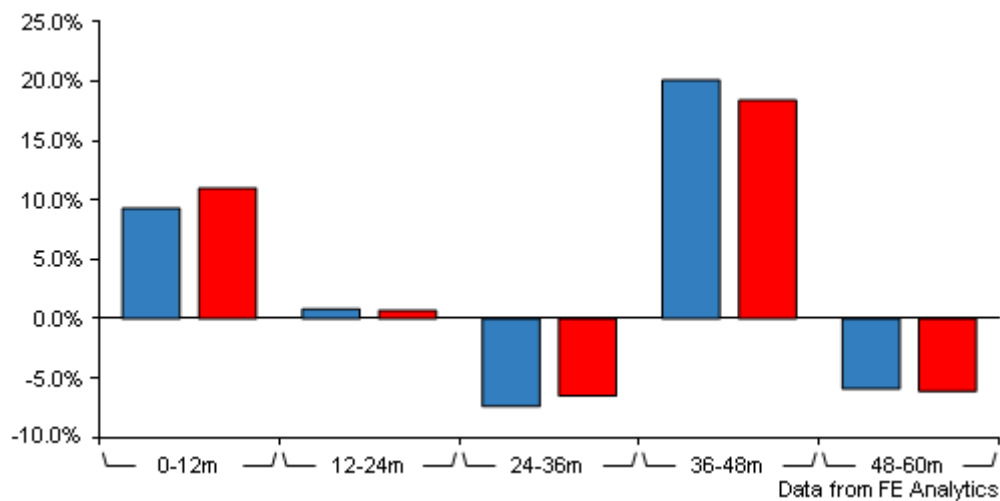
Unit Type	ACC
Mid	150.60(GBX)
Price Date	17 May 2024
Yield	6.20

Codes

Citicode	0YDI
SEDOL	B235QY1
ISIN	GB00B235QY15

JPM Global High Yield Bond C Gr Acc

Discrete Performance



	0-12m	12m-24m	24m-36m	36m-48m	48m-60m
JPM Global High Yield Bond C Gr Acc	+9.3	+0.8	-7.4	+20.1	-5.9
IA Sterling High Yield	+11.0	+0.7	-6.5	+18.4	-6.1
Rank within sector	24 / 29	15 / 29	18 / 29	10 / 27	14 / 24
Quartile	4	2	3	2	3

All prices in Pence Sterling (GBX) unless otherwise specified. Price total return performance figures are calculated on a bid price to bid price basis (mid to mid for OEICs) with net income (dividends) reinvested. Performance figures are shown in Pound Sterling (GBP).

Contact Details

Address 60 Victoria Embankment, London EC4Y 0JP

Telephone numbers 0800 727 770 (Main Number)

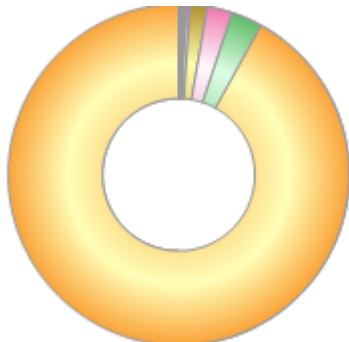
Website www.jpmorganassetmanagement.com

Email ifaenquiry@jpmorgan.com

JPM Global High Yield Bond C Gr Acc

Asset Allocation (31 Mar 2024)

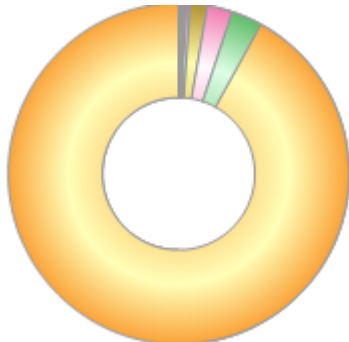
Rank	Asset Classes	%
1	US High Yield Fixed Interest	92.00
2	Canadian High Yield Fixed Interest	2.90
3	Money Market	2.40
4	Luxembourg High Yield Fixed Interest	1.60
5	French High Yield Fixed Interest	0.40
6	UK High Yield Fixed Interest	0.20
7	Austrian High Yield Fixed Interest	0.10
8	German High Yield Fixed Interest	0.10
9	Dutch High Yield Fixed Interest	0.10
10	Others	0.20



Powered by data from FE fundinfo

Regional Breakdown (31 Mar 2024)

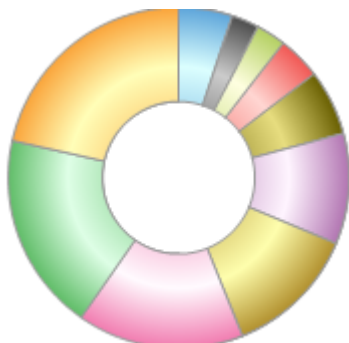
Rank	Regions	%
1	USA	92.00
2	Canada	2.90
3	Money Market	2.40
4	Luxembourg	1.60
5	France	0.40
6	UK	0.20
7	Switzerland	0.10
8	Austria	0.10
9	Netherlands	0.10
10	Others	0.20



Powered by data from FE fundinfo

Sector Breakdown (31 Mar 2024)

Rank	Sectors	%
1	Consumer Cyclicals	21.50
2	Communications	18.80
3	Consumer Non-Cyclicals	15.80
4	Energy	12.60
5	Capital Goods	10.50
6	Technology	6.20
7	Basic Industry	4.10
8	Transportation	2.80
9	Finance	2.60
10	Others	5.10



Powered by data from FE fundinfo

Top Holdings (31 Mar 2024)

Rank	Largest Holdings	%
1	DISH DBS 5.880% 15/11/24	1.80
2	CCO 4.750% 01/03/30	1.60

JPM Global High Yield Bond C Gr Acc

Rank	Largest Holdings	%
3	Bausch Health 9.000% 15/12/25	1.00
4	Live Nation Entertainment 6.500% 15/05/27	0.90
5	Cooper-Standard Automotive 13.500% 31/03/27	0.80
6	Bausch Health 5.500% 01/11/25	0.70
7	Staples 7.500% 15/04/26	0.70
8	CCO 5.000% 01/02/28	0.70
9	Intelsat Jackson 6.500% 15/03/30	0.60
10	CCO 4.500% 15/08/30	0.60