

Jupiter UK Smaller Companies Equity I Acc

What is the Fund's objective?

The objective of the Fund is to obtain long term capital growth by investing primarily in UK smaller companies.

Cumulative Performance



| | 3m | 6m | 1yr | 3yrs | 5yrs |
|---|--------|---------|---------|---------|---------|
| Jupiter UK Smaller Companies Equity I Acc | +11.7 | +16.7 | +7.7 | -22.5 | +1.6 |
| IA UK Smaller Companies | +9.7 | +16.3 | +10.8 | -13.1 | +19.1 |
| Rank within sector | 9 / 47 | 20 / 47 | 40 / 47 | 37 / 46 | 42 / 45 |
| Quartile | 1 | 2 | 4 | 4 | 4 |

Fund Information

| | |
|--------------|----------------------------------|
| Sector | IA UK Smaller Companies |
| Asset Class | Equity |
| Launch Date | 09-Feb-1999 |
| Fund Size | £102.9m / \$130.7m (17-May-2024) |
| Fund Manager | Matthew Cable |

How does FE fundinfo rate this fund?

| | |
|--------------------------|---|
| FE fundinfo Crown Rating |  |
| AFI | NO |
| Risk Score | 133 |

Investment Details

| | |
|-------------------------------|----------------|
| Initial Charge | 0.00% |
| Annual Charges | n/a |
| Note to charges | n/a |
| Minimum Initial Investment | £ 1,000,000 |
| Minimum Additional Investment | £ 50,000 |
| Dividend Policy | Feb 01 (Final) |

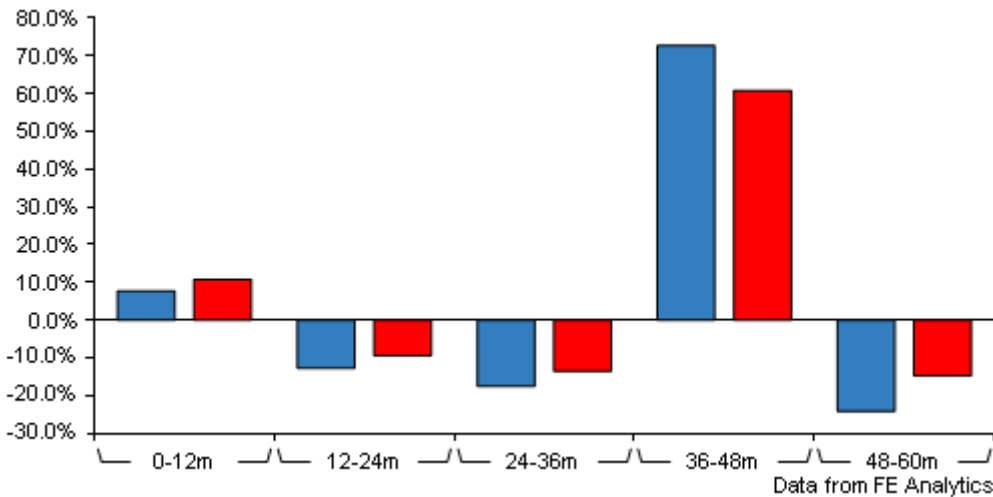
Prices

| | |
|------------|-------------|
| Unit Type | ACC |
| Mid | 396.44(GBX) |
| Price Date | 17 May 2024 |
| Yield | 1.97 |

Codes

| | |
|----------|--------------|
| Citicode | 09QV |
| SEDOL | B3LRRF4 |
| ISIN | GB00B3LRRF45 |

Jupiter UK Smaller Companies Equity I Acc



| | 0-12m | 12m-24m | 24m-36m | 36m-48m | 48m-60m |
|---|---------|---------|---------|---------|---------|
| Jupiter UK Smaller Companies Equity I Acc | +7.7 | -12.7 | -17.5 | +72.7 | -24.1 |
| IA UK Smaller Companies | +10.8 | -9.4 | -13.5 | +60.8 | -14.7 |
| Rank within sector | 40 / 47 | 35 / 47 | 36 / 46 | 11 / 45 | 43 / 45 |
| Quartile | 4 | 3 | 4 | 1 | 4 |

All prices in Pence Sterling (GBX) unless otherwise specified. Price total return performance figures are calculated on a bid price to bid price basis (mid to mid for OEICs) with net income (dividends) reinvested. Performance figures are shown in Pound Sterling (GBP).

Contact Details

Address The Zig Zag Building, 70
Victoria Street, London,
United Kingdom, SW1E 6SQ

Telephone numbers +44 (0)20 3817 1000 (Dealing
& Administration)
+44 (0)20 3817 1063 (Main
Number)

Website www.jupiteram.com

Email clientservices@jupiteram.com

Jupiter UK Smaller Companies Equity I

Acc

Asset Allocation (31 Jan 2024)

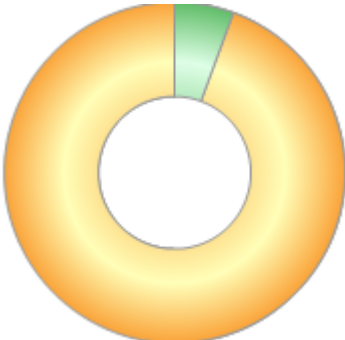
| Rank | Asset Classes | % |
|------|--------------------------|-------|
| 1 | UK Equities | 92.17 |
| 2 | Money Market | 5.61 |
| 3 | European Property Shares | 2.22 |
| | | |
| | | |
| | | |
| | | |
| | | |
| | | |
| | | |



Powered by data from FE fundinfo

Regional Breakdown (31 Jan 2024)

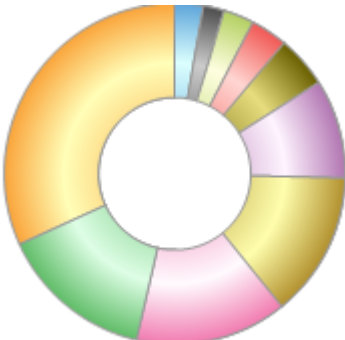
| Rank | Regions | % |
|------|-------------------------|-------|
| 1 | UK | 94.39 |
| 2 | Cash & Cash Equivalents | 5.61 |
| 3 | Isle of Man | 0.00 |
| | | |
| | | |
| | | |
| | | |
| | | |
| | | |
| | | |



Powered by data from FE fundinfo

Sector Breakdown (31 Mar 2024)

| Rank | Sectors | % |
|------|------------------------|-------|
| 1 | Industrials | 31.80 |
| 2 | Technology | 14.60 |
| 3 | Financials | 14.40 |
| 4 | Consumer Discretionary | 13.80 |
| 5 | Telecommunications | 9.40 |
| 6 | Real Estate | 4.90 |
| 7 | Cash | 3.50 |
| 8 | Energy | 2.90 |
| 9 | Consumer Staples | 2.00 |
| 10 | Others | 2.70 |



Powered by data from FE fundinfo

Top Holdings (30 Apr 2024)

| Rank | Largest Holdings | % |
|------|-------------------------------|------|
| 1 | Osborne Group Plc | 3.73 |
| 2 | Alpha Group International Plc | 3.62 |

Jupiter UK Smaller Companies Equity I Acc

| | | |
|----|--------------------------|------|
| 3 | Telecom Plus Plc | 3.61 |
| 4 | Gamma Communications Plc | 3.49 |
| 5 | Jtc Plc | 3.46 |
| 6 | Vesuvius | 3.45 |
| 7 | Oxford Instruments Plc | 3.40 |
| 8 | Chemring Group Plc | 3.03 |
| 9 | Ascential Plc | 3.00 |
| 10 | Jet2 Plc | 2.92 |