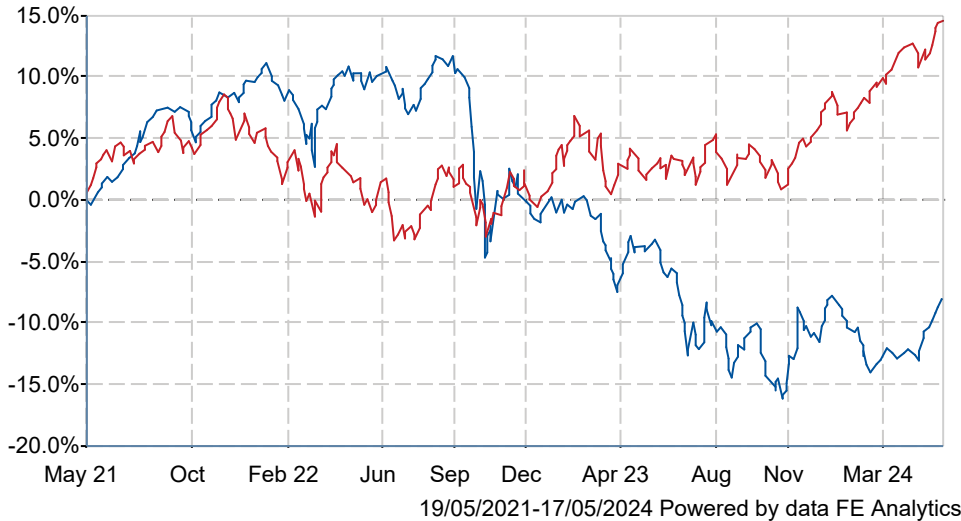


# Jupiter Monthly Alternative Income I Acc

## What is the Fund's objective?

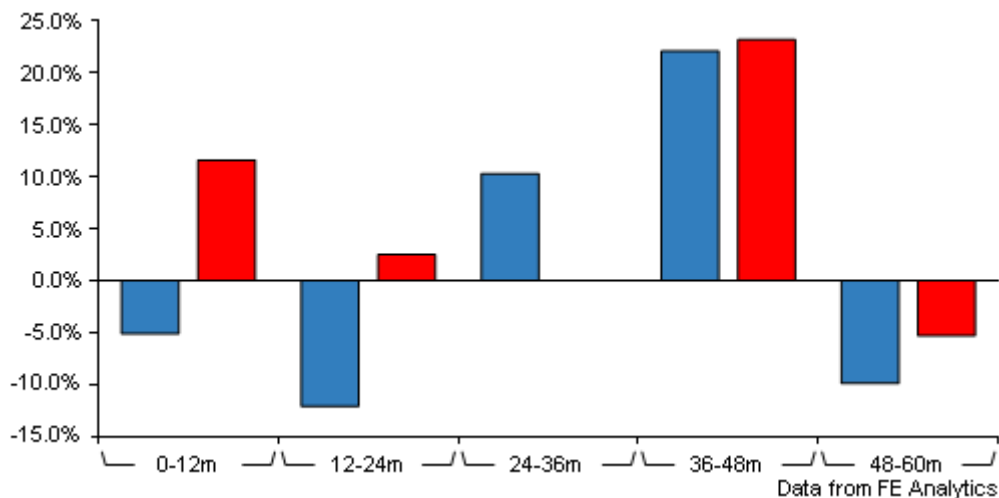
To provide a level of income together with the prospect of capital growth that is, net of fees, higher than the Consumer Price Index over rolling five-year periods.

## Cumulative Performance



	3m	6m	1yr	3yrs	5yrs
Jupiter Monthly Alternative Income I Acc	+6.9	+1.1	-5.1	-7.9	+1.3
IA Specialist	+5.0	+9.2	+11.6	+14.4	+33.6

## Discrete Performance



	0-12m	12m-24m	24m-36m	36m-48m	48m-60m
Jupiter Monthly Alternative Income I Acc	-5.1	-12.1	+10.3	+22.1	-9.9
IA Specialist	+11.6	+2.5	+0.0	+23.2	-5.3

All prices in Pence Sterling (GBX) unless otherwise specified. Price total return performance figures are calculated on a bid price to bid price basis (mid to mid for OEICs) with net income (dividends) reinvested. Performance figures are shown in Pound Sterling (GBP).

## Fund Information

Sector	IA Specialist
Asset Class	Mixed Asset
Launch Date	01-Mar-2000
Fund Size	£144.3m / \$183.4m (17-May-2024)
Fund Manager	Richard Curling

## How does FE fundinfo rate this fund?

FE fundinfo Crown Rating	
AFI	NO
Risk Score	85

## Investment Details

Initial Charge	0.00%
Annual Charges	n/a
Note to charges	n/a
Minimum Initial Investment	£ 1,000,000
Minimum Additional Investment	£ 50,000
Dividend Policy	Jan 01, Feb 01, Mar 01, Apr 01 (Final), May 01, Jun 01, Jul 01, Aug 01, Sep 01, Oct 01, Nov 01, Dec 01

## Prices

Unit Type	ACC
Mid	130.81(GBX)
Price Date	17 May 2024
Yield	6.47

## Codes

Citicode	09Q1
SEDOL	B4WLF92
ISIN	GB00B4WLF922

# Jupiter Monthly Alternative Income I Acc

## Top Holdings (30 Apr 2024)

Rank	Largest Holdings	%
1	Greencoat Uk Wind Plc	5.48
2	Hipgnosis Songs Fund Ltd	4.74
3	3I Infrastructure Plc	4.30
4	Sequoia Economic Infrastructure In	3.92
5	Tufton Oceanic Assets Ltd	3.72
6	Biopharma Credit Plc	3.68
7	Supermarket Income Reit Plc	3.44
8	Real Estate Credit Investments Lim	3.30
9	Hicl Infrastructure Plc	3.22
10	Target Healthcare Reit Plc	3.00

## Contact Details

Address	The Zig Zag Building, 70 Victoria Street, London, United Kingdom, SW1E 6SQ
Telephone numbers	+44 (0)20 3817 1000 (Dealing & Administration) +44 (0)20 3817 1063 (Main Number)
Website	<a href="http://www.jupiteram.com">www.jupiteram.com</a>
Email	<a href="mailto:clientservices@jupiteram.com">clientservices@jupiteram.com</a>