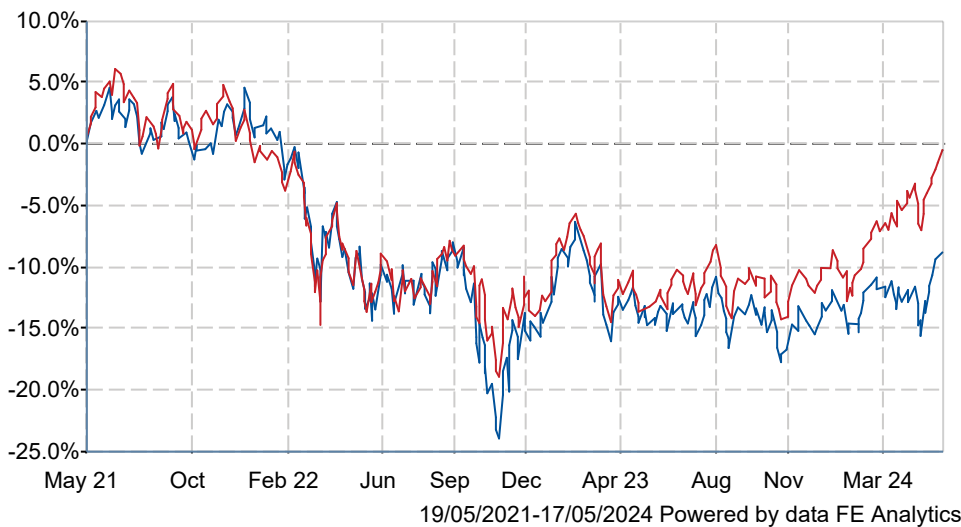


CT (Lux) Responsible Global Emerging Markets Equity R Acc USD

What is the Fund's objective?

The Fund objective is to enable investors to participate in an actively managed portfolio of emerging market companies contributing to or benefiting from sustainable economic development. The Fund is actively managed. It is not constrained by its comparator benchmark, is the MSCI Emerging Markets NR Index, and has significant freedom to invest in a portfolio that is materially different to the benchmark's own composition. The Fund seeks to meet its investment objective by investing in companies demonstrating commitment to good governance and sustainability. Companies must meet standards, including board balance and independence, transparency and protecting shareholder rights. They must also demonstrate a clear commitment to sustainable environmental and social practices.

Cumulative Performance



	3m	6m	1yr	3yrs	5yrs
CT (Lux) Responsible Global Emerging Markets Equity R Acc USD	+2.7	+5.5	+6.9	-8.2	+4.6
Equity - Emerging Markets	+7.2	+11.3	+14.1	+0.2	+23.8
Rank within sector	314 / 335	297 / 327	269 / 307	188 / 266	201 / 220
Quartile	4	4	4	3	4

Fund Information

Sector	Equity - Emerging Markets
Asset Class	Equity
Launch Date	01-Jul-1994
Fund Size	£236.7m / \$300.7m (16-May-2024)
Fund Manager	Gokce Bulut

How does FE fundinfo rate this fund?

FE fundinfo Crown Rating	
AFI	NO
Risk Score	109

Investment Details

Initial Charge	0.00%
Annual Charges	0.75%
Note to charges	Initial Charges: max.;
Minimum Initial Investment	£ 1,000
Minimum Additional Investment	£ 1,000
Dividend Policy	Jan 17 (Final)

Prices

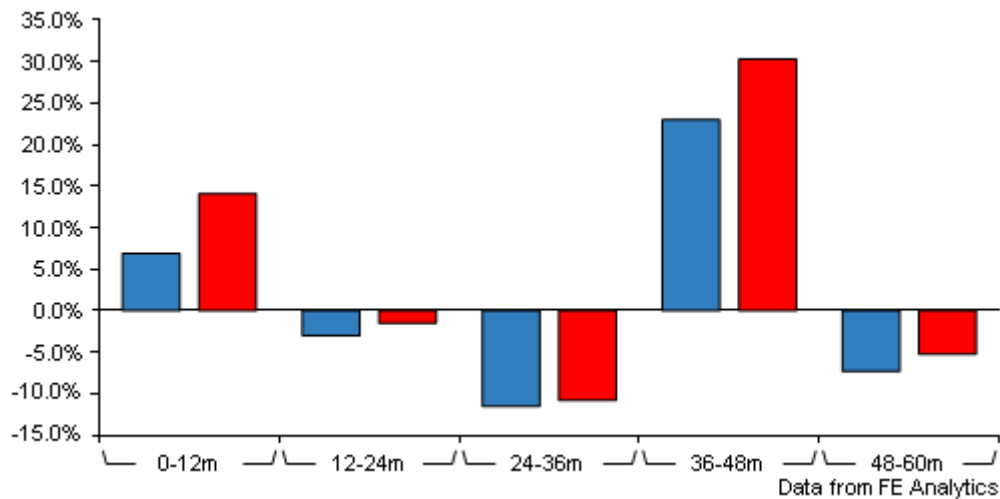
Unit Type	ACC
Mid	13.09(USD)
Price Date	16 May 2024
Yield	n/a

Codes

Citicode	C00C
SEDOL	BD8CSG0
ISIN	LU1489174182

CT (Lux) Responsible Global Emerging Markets Equity R Acc USD

Discrete Performance



	0-12m	12m-24m	24m-36m	36m-48m	48m-60m
CT (Lux) Responsible					
Global Emerging Markets Equity R Acc USD	+6.9	-3.0	-11.5	+23.0	-7.3
Equity - Emerging Markets	+14.1	-1.5	-10.8	+30.3	-5.2
Rank within sector	269 / 307	158 / 286	151 / 266	208 / 237	163 / 220
Quartile	4	3	3	4	3

Price total return performance figures are calculated on a bid price to bid price basis (mid to mid where applicable) with gross income (dividends) reinvested. Performance figures are shown in Pound Sterling (GBP).

Contact Details

Address BMO Global Asset Management, Exchange House, Primrose Street, London , United Kingdom, EC2A 2NY

Telephone numbers +44 (0) 20 7628 8000 (Main Number)

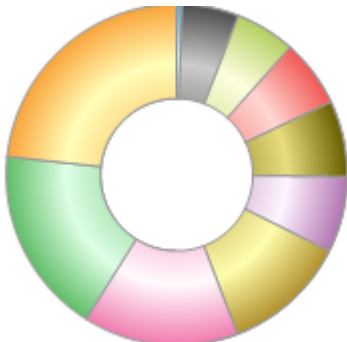
Website www.bmogam.com

Email invest@columbiathreadneedle.com

CT (Lux) Responsible Global Emerging Markets Equity R Acc USD

Asset Allocation (30 Apr 2024)

Rank	Asset Classes	%
1	India Equities	23.30
2	Other Equities	17.80
3	Taiwan Equities	14.70
4	China Equities	11.80
5	Hong Kong Equities	7.20
6	Brazil Equities	7.20
7	South Korea Equities	6.40
8	Indonesia Equities	5.70
9	Vietnam Equities	5.40
10	Cash	0.50



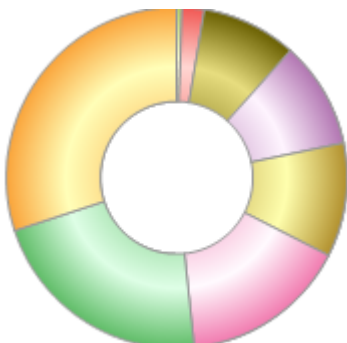
Regional Breakdown (30 Apr 2024)

Rank	Regions	%
1	India	23.30
2	Other	17.80
3	Taiwan	14.70
4	China	11.80
5	Brazil	7.20
6	Hong Kong	7.20
7	South Korea	6.40
8	Indonesia	5.70
9	Vietnam	5.40
10	Cash	0.50



Sector Breakdown (30 Apr 2024)

Rank	Sectors	%
1	Information Technology	30.00
2	Financials	21.60
3	Consumer Staples	15.80
4	Health Care	10.80
5	Industrials	10.10
6	Consumer Discretionary	9.00
7	Communication Services	2.10
8	Cash	0.50



Top Holdings (30 Apr 2024)

Rank	Largest Holdings	%
1	Taiwan Semiconductor Manufacturing Co Ltd	9.40
2	FPT Corp	5.40

CT (Lux) Responsible Global Emerging Markets Equity R Acc USD

Rank	Largest Holdings	%
3	HDFC Bank Ltd	4.60
4	AIA Group Ltd	4.40
5	Jeronimo Martins SGPS SA	4.30
6	Bank Central Asia Tbk PT	3.90
7	Haier Smart Home Co Ltd	3.20
8	Biocon Ltd	2.80
9	Techtronic Industries Co Ltd	2.70
10	Max Healthcare Institute Ltd	2.60