



Invesco UK Smaller Companies Equity (UK) Z Acc

What is the Fund's objective?

The objective of the Fund is to achieve long-term (5 years plus) capital growth. The Fund invests at least 80% of its assets in shares of smaller companies incorporated, domiciled or carrying out the main part of their economic activity in the UK. The Fund may use derivatives (complex instruments) to manage the Fund more efficiently, with the aim of reducing risk, reducing costs and/or generating additional capital or income. The Fund has an active investment approach based on stock selection driven by the fund manager's assessment of valuation. The Fund is not constrained by a benchmark and has a flexible approach with no inbuilt sector bias, with a preference for smaller companies (typically companies that are no larger (by market capitalisation) than the largest company in the bottom 10% of the FTSE All Share Index). The reference to (UK) in the Fund's name only relates to the Fund's domicile and is unrelated to the Fund's objective and investment policy.

Cumulative Performance



	3m	6m	1yr	3yrs	5yrs
 Invesco UK Smaller Companies Equity (UK) Z Acc	+6.4	+13.2	+4.6	-16.1	+9.3
 IA UK Smaller Companies	+9.7	+16.3	+10.8	-13.1	+19.1
Rank within sector	46 / 47	42 / 47	42 / 47	29 / 46	34 / 45
Quartile	4	4	4	3	3

Fund Information

Sector	IA UK Smaller Companies
Asset Class	Equity
Launch Date	09-May-1992
Fund Size	£457.7m / \$581.4m (30-Apr-2024)
Fund Manager	Jonathan Brown Robin West

How does FE fundinfo rate this fund?

FE fundinfo Crown Rating	
AFI	NO
Risk Score	129

Investment Details

Initial Charge	0.87%
Annual Charges	0.87%
Note to charges	Initial Charges: max.;
Minimum Initial Investment	£ 500
Minimum Additional Investment	£ 500
Dividend Policy	Aug 01 (Final)

Prices

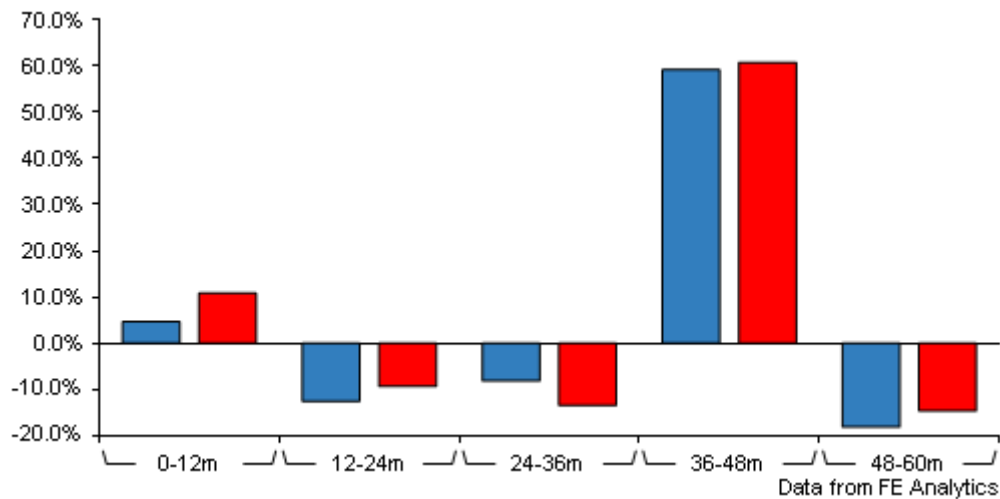
Unit Type	ACC
Mid	572.20(GBX)
Price Date	17 May 2024
Yield	2.04

Codes

Citicode	GUXX
SEDOL	B8N46H3
ISIN	GB00B8N46H36

Invesco UK Smaller Companies Equity (UK) Z Acc

Discrete Performance



	0-12m	12m-24m	24m-36m	36m-48m	48m-60m
Invesco UK Smaller Companies Equity (UK) Z Acc	+4.6	-12.6	-8.2	+59.2	-18.2
IA UK Smaller Companies	+10.8	-9.4	-13.5	+60.8	-14.7
Rank within sector	42 / 47	32 / 47	8 / 46	23 / 45	32 / 45
Quartile	4	3	1	2	3

All prices in Pence Sterling (GBX) unless otherwise specified. Price total return performance figures are calculated on a bid price to bid price basis (mid to mid for OEICs) with net income (dividends) reinvested. Performance figures are shown in Pound Sterling (GBP).

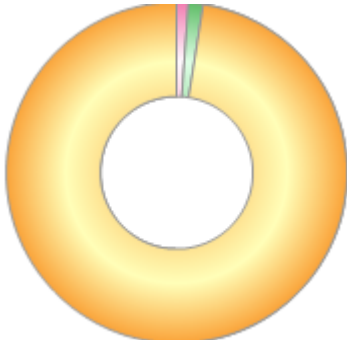
Contact Details

Address	Invesco Administration Centre, PO Box 586, Darlington, United Kingdom, DL1 9BE
Telephone numbers	MN (Fax Number) 44 20 7543 3588 (Main Number)
Website	www.invesco.co.uk
Email	enquiry@invesco.com

Invesco UK Smaller Companies Equity (UK) Z Acc

Asset Allocation (31 Mar 2024)

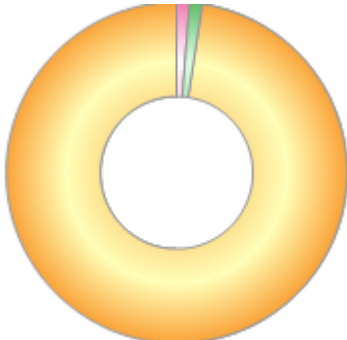
Rank	Asset Classes	%
1	UK Equities	97.47
2	Money Market	1.44
3	Singapore Equities	1.09



Powered by data from FE fundinfo

Regional Breakdown (30 Apr 2024)

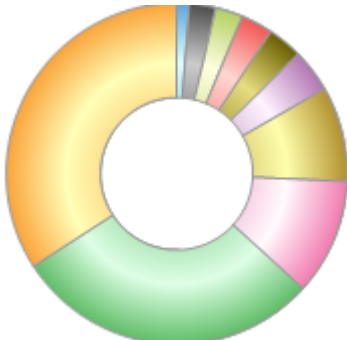
Rank	Regions	%
1	UK	97.64
2	Money Market	1.21
3	Singapore	1.15



Powered by data from FE fundinfo

Sector Breakdown (30 Apr 2024)

Rank	Sectors	%
1	Industrials	34.11
2	Consumer Discretionary	29.07
3	Financials	11.04
4	Technology	9.00
5	Basic Materials	4.06
6	Consumer Staples	3.34
7	Health Care	3.02
8	Energy	2.61
9	Real Estate	2.54
10	Cash	1.21



Powered by data from FE fundinfo

Top Holdings (30 Apr 2024)

Rank	Largest Holdings	%
1	4imprint	4.83
2	JTC	3.97

Invesco UK Smaller Companies Equity (UK) Z Acc

Rank	Largest Holdings	%
3	Hilton Food	3.34
4	Hollywood Bowl	3.33
5	Hill & Smith	3.20
6	Chemring	3.19
7	Alfa Financial	2.76
8	A J Bell	2.49
9	Serco	2.42
10	Advanced Medical Solutions	2.24