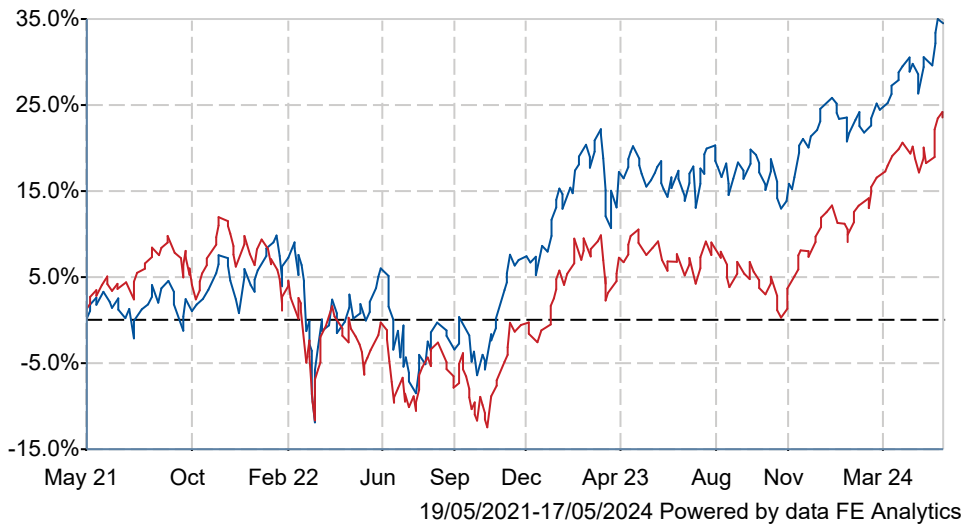




Invesco European Equity (UK) Z Acc

What is the Fund's objective?

The objective of the Fund is to achieve long-term (5 years plus) capital growth. The Fund invests at least 80% of its assets in shares of companies incorporated, domiciled or carrying out the main part of their economic activity in Europe, excluding the UK. The Fund may use derivatives (complex instruments) to manage the Fund more efficiently, with the aim of reducing risk, reducing costs and/or generating additional capital or income. The Fund has an active investment approach based on stock selection driven by the fund manager's assessment of valuation. The Fund is not constrained by a benchmark and has a flexible approach with no inbuilt bias to country or sector, with a preference for large sized companies as determined by their market capitalisation (total market value of a company's outstanding shares).

Cumulative Performance



	3m	6m	1yr	3yrs	5yrs
 Invesco European Equity (UK) Z Acc	+8.9	+11.8	+15.4	+33.6	+53.9
 IA Europe Excluding UK	+7.1	+14.3	+14.5	+22.6	+55.3
Rank within sector	32 / 143	122 / 143	61 / 143	14 / 136	75 / 129
Quartile	1	4	2	1	3

Fund Information

Sector	IA Europe Excluding UK
Asset Class	Equity
Launch Date	18-Jan-1986
Fund Size	£1,704.3m / \$2,165.2m (30-Apr-2024)
Fund Manager	John Surplice James Rutland

How does FE fundinfo rate this fund?

FE fundinfo Crown Rating	
AFI	NO
Risk Score	117

Investment Details

Initial Charge	0.88%
Annual Charges	0.88%
Note to charges	Initial Charges: max.;
Minimum Initial Investment	£ 500
Minimum Additional Investment	£ 500
Dividend Policy	Nov 01 (Final)

Prices

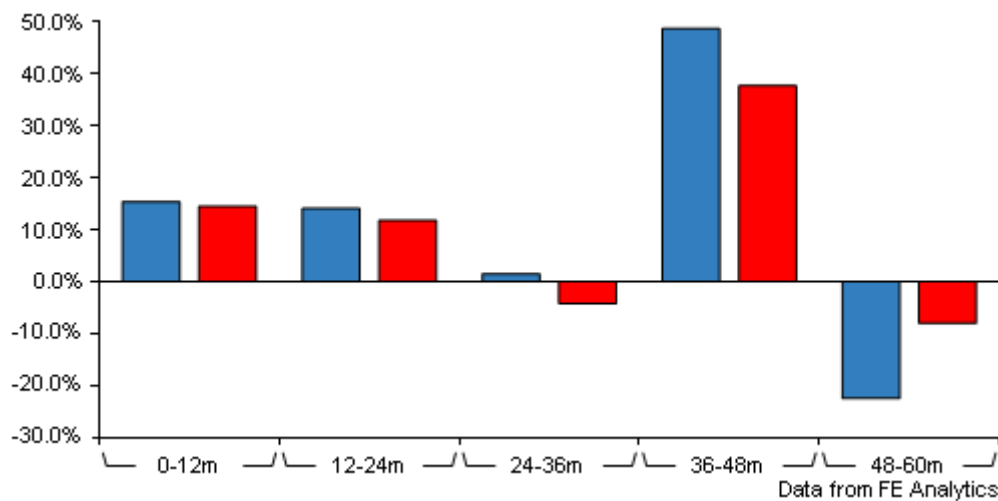
Unit Type	ACC
Mid	692.13(GBX)
Price Date	17 May 2024
Yield	2.59

Codes

Citicode	GUVA
SEDOL	B8N44J1
ISIN	GB00B8N44J10

Invesco European Equity (UK) Z Acc

Discrete Performance



	0-12m	12m-24m	24m-36m	36m-48m	48m-60m
<div></div> Invesco European Equity (UK) Z Acc	+15.4	+14.1	+1.5	+48.7	-22.5
<div></div> IA Europe Excluding UK	+14.5	+11.8	-4.2	+37.7	-8.0
Rank within sector	61 / 143	56 / 142	18 / 136	16 / 131	123 / 129
Quartile	2	2	1	1	4

All prices in Pence Sterling (GBX) unless otherwise specified. Price total return performance figures are calculated on a bid price to bid price basis (mid to mid for OEICs) with net income (dividends) reinvested. Performance figures are shown in Pound Sterling (GBP).

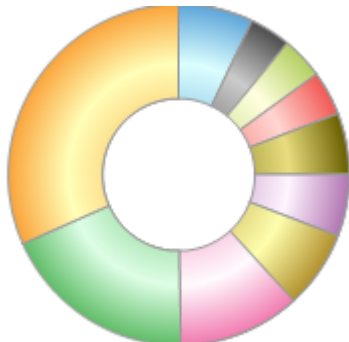
Contact Details

Address	Invesco Administration Centre, PO Box 586, Darlington, United Kingdom, DL1 9BE
Telephone numbers	MN (Fax Number) 44 20 7543 3588 (Main Number)
Website	www.invesco.co.uk
Email	enquiry@invesco.com

Invesco European Equity (UK) Z Acc

Asset Allocation (31 Mar 2024)

Rank	Asset Classes	%
1	French Equities	31.66
2	German Equities	18.56
3	Dutch Equities	11.55
4	Spanish Equities	7.39
5	Italian Equities	5.88
6	Finnish Equities	5.76
7	Irish Equities	4.21
8	UK Equities	3.99
9	Danish Equities	3.93
10	Others	7.07



Powered by data from FE fundinfo

Regional Breakdown (30 Apr 2024)

Rank	Regions	%
1	France	31.32
2	Germany	17.67
3	Netherlands	11.65
4	Spain	7.33
5	Finland	5.95
6	Italy	5.91
7	UK	4.87
8	Ireland	4.14
9	Denmark	3.97
10	Others	7.19



Powered by data from FE fundinfo

Sector Breakdown (30 Apr 2024)

Rank	Sectors	%
1	Financials	18.19
2	Industrials	17.39
3	Energy	11.61
4	Health Care	10.49
5	Technology	9.71
6	Basic Materials	8.16
7	Consumer Discretionary	6.98
8	Utilities	6.89
9	Consumer Staples	6.41
10	Others	4.17



Powered by data from FE fundinfo

Top Holdings (30 Apr 2024)

Rank	Largest Holdings	%
1	Total	4.43
2	UPM	3.43

Invesco European Equity (UK) Z Acc

Rank	Largest Holdings	%
3	Unicredit	3.39
4	Sanofi	3.23
5	Merck	2.91
6	Infineon Technologies	2.90
7	CaixaBank	2.78
8	Deutsche Telekom	2.66
9	Banco Santander	2.63
10	Siemens	2.61