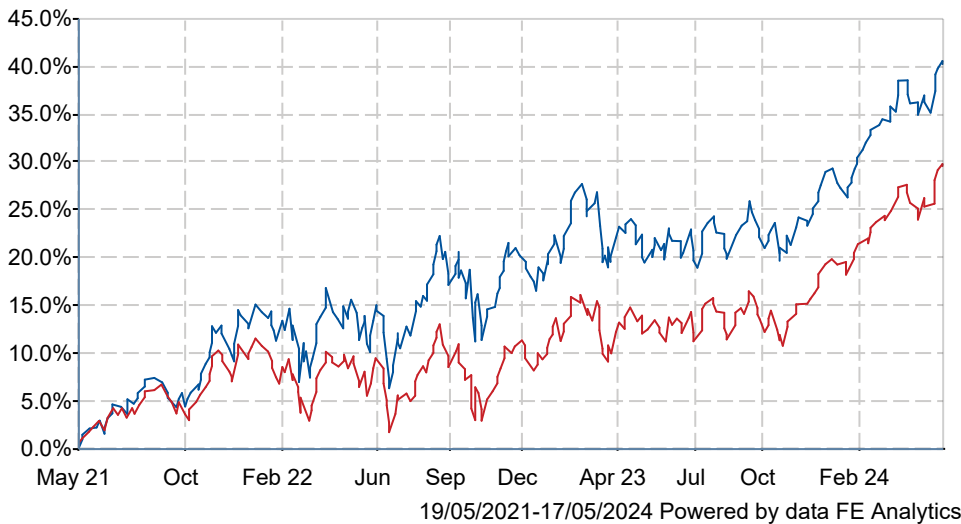




JPM Global Equity Income C Acc

What is the Fund's objective?

To provide a portfolio designed to achieve income by investing, at least 80% of the Fund's assets globally, in equities, in any economic sector whilst participating in capital growth over the long-term (5-10 years)

Cumulative Performance




	3m	6m	1yr	3yrs	5yrs
 JPM Global Equity Income C Acc	+5.2	+12.7	+16.8	+38.5	+82.9
 IA Global Equity Income	+5.2	+12.3	+15.0	+28.5	+52.8
Rank within sector	29 / 54	25 / 54	14 / 52	10 / 49	4 / 44
Quartile	3	2	2	1	1

Fund Information

Sector	IA Global Equity Income
Asset Class	Equity
Launch Date	07-Feb-2007
Fund Size	£733.3m / \$931.6m (17-May-2024)
Fund Manager	Helge Skibeli Sam Witherow Michael Rossi

How does FE fundinfo rate this fund?

Alpha Manager Rating	Helge Skibeli
FE fundinfo Crown Rating	
AFI	NO
Risk Score	96

Investment Details

Initial Charge	0.00%
Annual Charges	0.75%
Note to charges	n/a
Minimum Initial Investment	£ 5,000,000
Minimum Additional Investment	£ 100,000
Dividend Policy	Feb 01 (Final), May 01, Aug 01, Nov 01

Prices

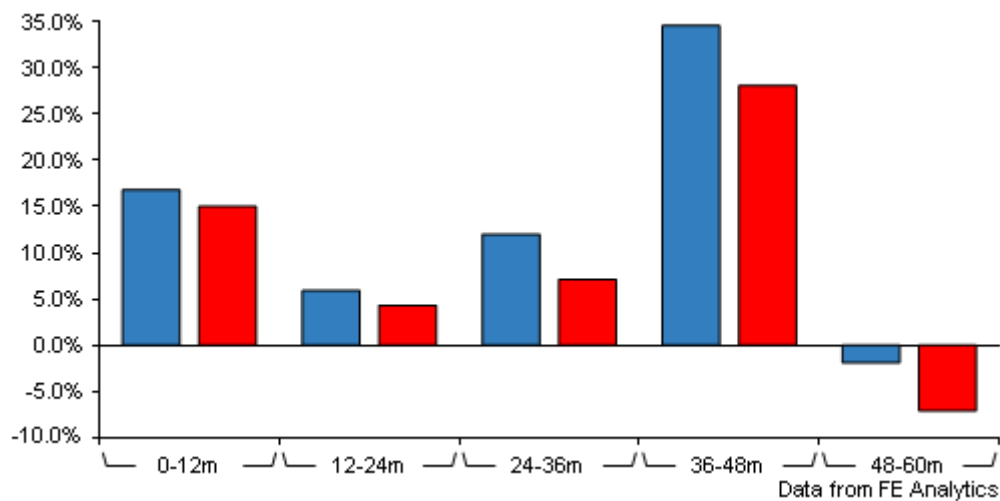
Unit Type	ACC
Mid	389.50(GBX)
Price Date	17 May 2024
Yield	2.20

Codes

Citicode	0YD9
SEDOL	B235J20
ISIN	GB00B235J206

JPM Global Equity Income C Acc

Discrete Performance



	0-12m	12m-24m	24m-36m	36m-48m	48m-60m
JPM Global Equity Income C Acc	+16.8	+5.9	+12.0	+34.6	-1.9
IA Global Equity Income	+15.0	+4.3	+7.1	+28.1	-7.1
Rank within sector	14 / 52	18 / 50	11 / 49	13 / 46	14 / 44
Quartile	2	2	1	2	2

All prices in Pence Sterling (GBX) unless otherwise specified. Price total return performance figures are calculated on a bid price to bid price basis (mid to mid for OEICs) with net income (dividends) reinvested. Performance figures are shown in Pound Sterling (GBP).

Contact Details

Address 60 Victoria Embankment, London EC4Y 0JP

Telephone numbers 0800 727 770 (Main Number)

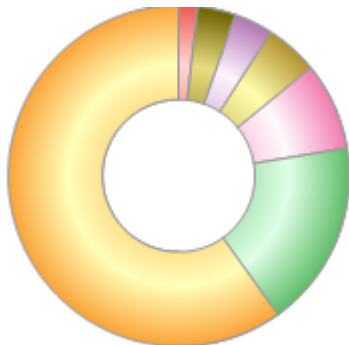
Website www.jpmmorganassetmanagement.com

Email ifaenquiry@jpmmorgan.com

JPM Global Equity Income C Acc

Asset Allocation (31 Mar 2024)

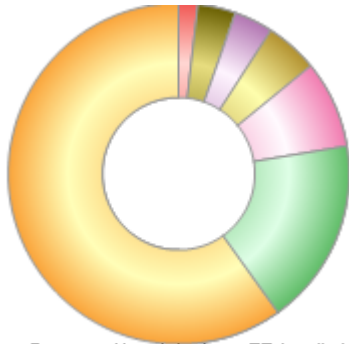
Rank	Asset Classes	%
1	US Equities	59.90
2	International Equities	17.70
3	Global Emerging Market Equities	8.30
4	Asia Pacific ex Japan Equities	5.00
5	UK Equities	3.70
6	Japanese Equities	3.60
7	Money Market	1.80



Powered by data from FE fundinfo

Regional Breakdown (31 Mar 2024)

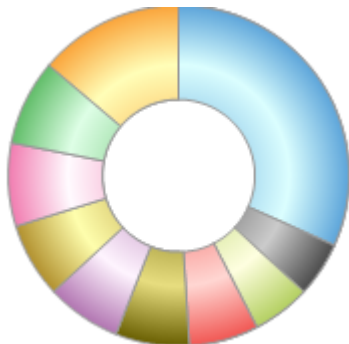
Rank	Regions	%
1	USA	59.90
2	Europe & Middle East	17.70
3	Global Emerging Markets	8.30
4	Pacific ex-Japan	5.00
5	UK	3.70
6	Japan	3.60
7	Money Market	1.80



Powered by data from FE fundinfo

Sector Breakdown (31 Mar 2024)

Rank	Sectors	%
1	Technology - Semi & Hardware	13.80
2	Technology - Software	8.10
3	Retail	7.90
4	Pharm/Medtech	7.10
5	Financial Services	7.10
6	Banks	7.00
7	Industrial Cyclicals	6.60
8	Energy	5.50
9	Insurance	5.20
10	Others	31.70



Powered by data from FE fundinfo

Top Holdings (31 Mar 2024)

Rank	Largest Holdings	%
1	Microsoft	7.20
2	Taiwan Semiconductor	4.20

JPM Global Equity Income C Acc

Rank	Largest Holdings	%
3	CME	3.00
4	UnitedHealth	3.00
5	Meta Platforms	2.90
6	Prologis	2.80
7	Coca-Cola	2.40
8	VINCI	2.30
9	AbbVie	2.20
10	Exxon Mobil	2.20