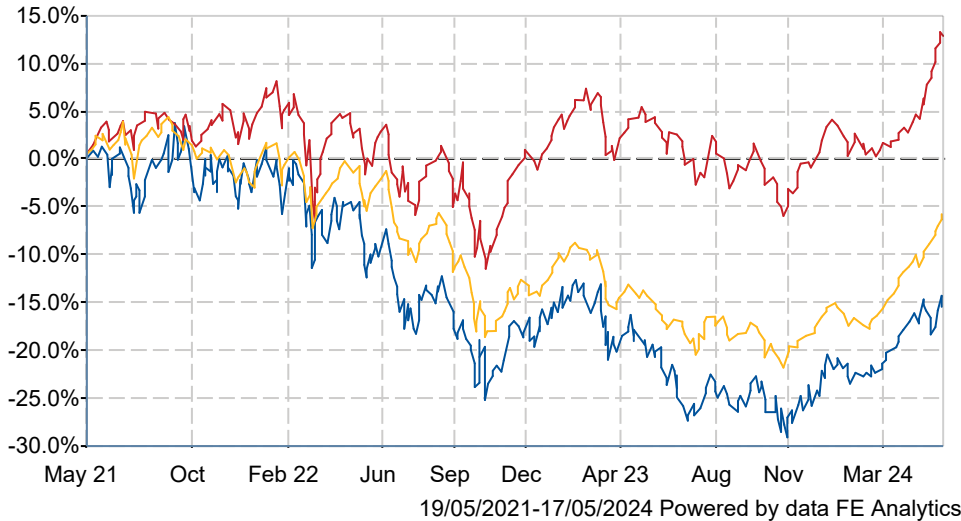





# The Diverse Income Trust PLC Ord 0.1P

## What is the Fund's objective?

To provide shareholders with an attractive and growing level of dividends coupled with capital growth over the long term.

## Cumulative Performance



	3m	6m	1yr	3yrs	5yrs
 The Diverse Income Trust PLC Ord 0.1P	+7.8	+12.4	+6.8	-16.0	+17.6
 UK Equity Income	+11.7	+13.5	+8.0	+12.3	+28.6
 NAV	+13.2	+16.2	+11.8	-6.3	+24.8
Rank within sector	16 / 18	11 / 18	12 / 18	18 / 18	16 / 18
Quartile	4	3	3	4	4

## Fund Information

Sector	UK Equity Income
Asset Class	Equity
Launch Date	28-Apr-2011
Fund Size	£279.7m / \$355.3m (17-May-2024)
Fund Manager	Gervais Williams Martin Turner

## How does FE fundinfo rate this fund?

FE fundinfo Crown Rating	
AFI	NO
Risk Score	129

## Investment Details

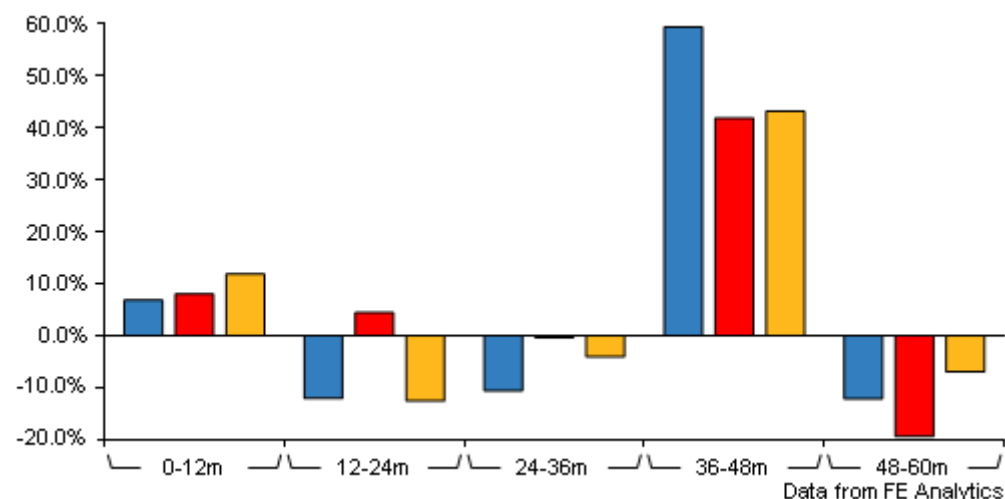
Initial Charge	n/a
Annual Charges	0.86%
Note to charges	n/a
Minimum Initial Investment	n/a
Minimum Additional Investment	n/a
Dividend Policy	n/a
Management Contract	n/a

## Prices

Unit Type	INC
Mid	87.80(GBX)
Price Date	17 May 2024
Yield	4.84
Discount	-9.44
Diluted NAV	
- Estimate	97.17
- Last Published	97.17 (16-May-2024)

# The Diverse Income Trust PLC Ord 0.1P

## Discrete Performance



	0-12m	12m-24m	24m-36m	36m-48m	48m-60m
The Diverse Income Trust PLC Ord 0.1P	+6.8	-12.1	-10.6	+59.4	-12.2
UK Equity Income	+8.0	+4.4	-0.4	+41.9	-19.4
NAV	+11.8	-12.6	-4.1	+43.2	-7.0
Rank within sector	12 / 18	18 / 18	17 / 18	5 / 18	4 / 18
Quartile	3	4	4	1	1

All prices in Pence Sterling (GBX) unless otherwise specified. Price total return performance figures are calculated using closing mid prices and with net income (dividends) reinvested. NAV total return performance figures are calculated using fully diluted (where applicable) daily estimated NAV figures from Thomson Financial Datastream. Performance figures are shown in Pound Sterling (GBP).

## Codes

Citicode	NNE0
SEDOL	B65TLW2
ISIN	GB00B65TLW28
TIDM	DIVI

## Contact Details

**Address** Premier Fund Managers Ltd, Eastgate Court, High Street, Guildford, Surrey, GU1 3DE

**Telephone numbers** 01483 306090 (Main Number)

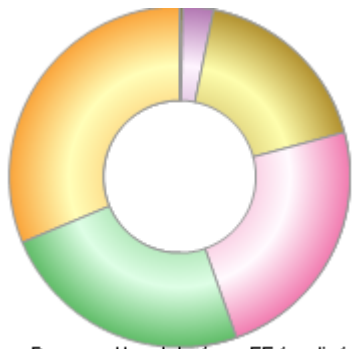
**Website** [www.premiermiton.com](http://www.premiermiton.com)

**Email** [info@premiermiton.com](mailto:info@premiermiton.com)

# The Diverse Income Trust PLC Ord 0.1P

## Asset Allocation (31 Mar 2024)

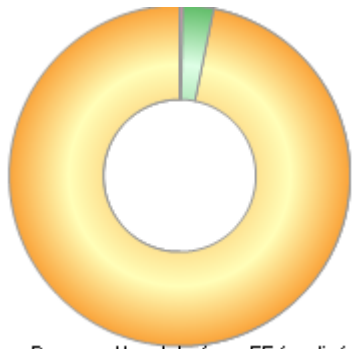
Rank	Asset Classes	%
1	UK Equities	31.30
2	UK Small Cap Companies	24.10
3	FTSE 100	23.80
4	FTSE 250	17.60
5	Cash	2.90
6	Other	0.30



Powered by data from FE fundinfo

## Regional Breakdown (31 Mar 2024)

Rank	Regions	%
1	UK-listed non-indexed shares	96.80
2	Cash	2.90
3	Other	0.30



Powered by data from FE fundinfo

## Top Holdings (31 Mar 2024)

Rank	Largest Holdings	%
1	TP ICAP Group	2.90
2	XPS Pensions Group	2.80
3	CMC Markets	2.50
4	Galliford Try Holdings	2.30
5	Pan African Resources	2.10
6	Just Group	2.10
7	Man Group	2.00
8	Kenmare Resources	1.90
9	Paypoint	1.90
10	Sabre Insurance Group	1.90