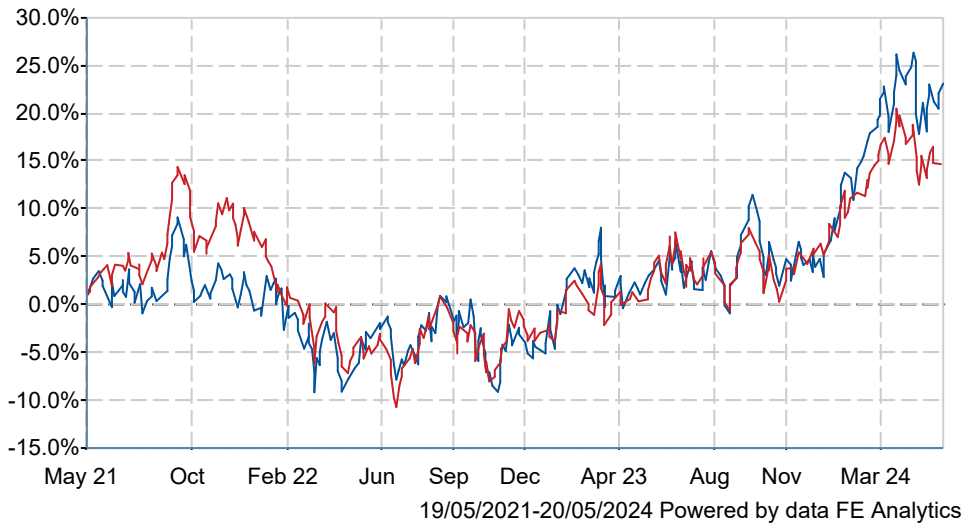




# Liontrust Japan Equity C Acc GBP

## What is the Fund's objective?

To generate long term (5 years or more) capital growth.

## Cumulative Performance



	3m	6m	1yr	3yrs	5yrs
 Liontrust Japan Equity C Acc GBP	+3.3	+14.3	+17.7	+21.9	+55.7
 IA Japan	+0.8	+8.9	+9.7	+14.3	+38.4
Rank within sector	13 / 102	10 / 102	15 / 102	35 / 98	15 / 93
Quartile	1	1	1	2	1

## Fund Information

Sector	IA Japan
Asset Class	Equity
Launch Date	22-Jun-2015
Fund Size	£65.2m / \$82.9m (17-May-2024)
Fund Manager	Thomas Smith

## How does FE fundinfo rate this fund?

FE fundinfo Crown Rating	
AFI	NO
Risk Score	

## Investment Details

Initial Charge	n/a
Annual Charges	0.75%
Note to charges	n/a
Minimum Initial Investment	£ 250,000
Minimum Additional Investment	n/a
Dividend Policy	Jan 02 (Final)

## Prices

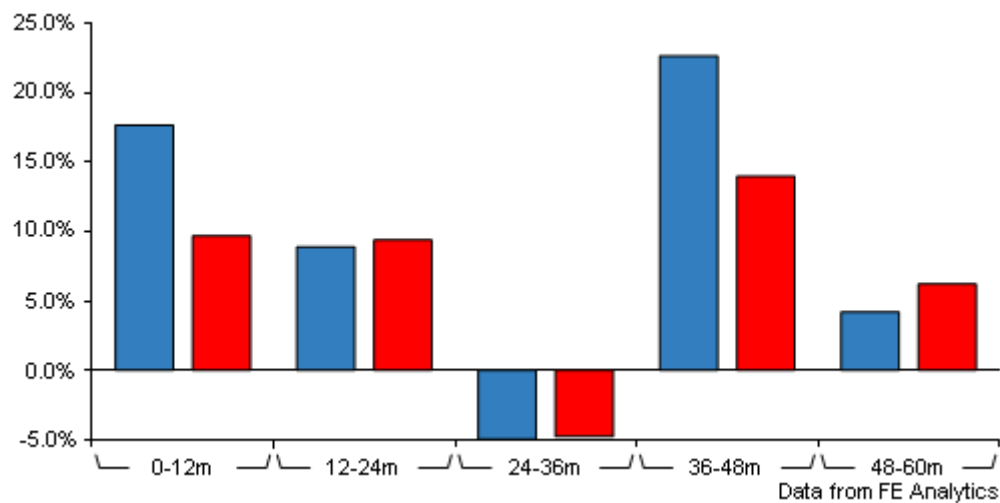
Unit Type	ACC
Mid	187.58(GBX)
Price Date	20 May 2024
Yield	1.51

## Codes

Citicode	MEFE
SEDOL	BXDZFF2
ISIN	GB00BXDZFF23

# Liontrust Japan Equity C Acc GBP

## Discrete Performance



	0-12m	12m-24m	24m-36m	36m-48m	48m-60m
<div>Liontrust Japan Equity C Acc GBP</div>	+17.7	+8.9	-5.0	+22.7	+4.2
<div>IA Japan</div>	+9.7	+9.4	-4.8	+14.0	+6.2
Rank within sector	15 / 102	58 / 101	62 / 97	12 / 94	32 / 93
Quartile	1	3	3	1	2

All prices in Pence Sterling (GBX) unless otherwise specified. Price total return performance figures are calculated on a bid price to bid price basis (mid to mid for OEICs) with net income (dividends) reinvested. Performance figures are shown in Pound Sterling (GBP).

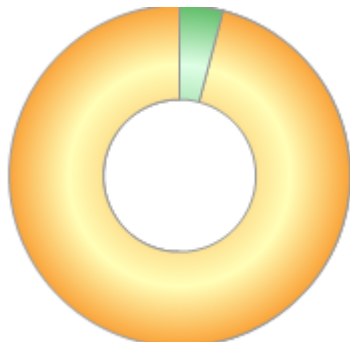
## Contact Details

Address	2 Savoy Court, London, United Kingdom, WC2R 0EZ
Telephone numbers	20 7412 1700 (Main Number)
Website	<a href="http://www.liontrust.co.uk">www.liontrust.co.uk</a>
Email	<a href="mailto:LionTA@liontrust.co.uk">LionTA@liontrust.co.uk</a>

# Liontrust Japan Equity C Acc GBP

## Asset Allocation (30 Apr 2024)

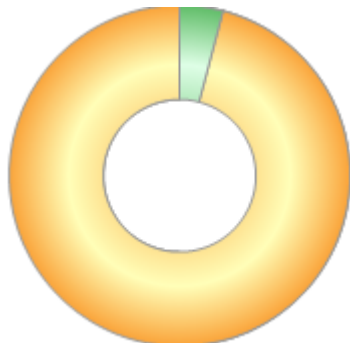
Rank	Asset Classes	%
1	Japanese Equities	95.93
2	Money Market	4.07



Powered by data from FE fundinfo

## Regional Breakdown (30 Apr 2024)

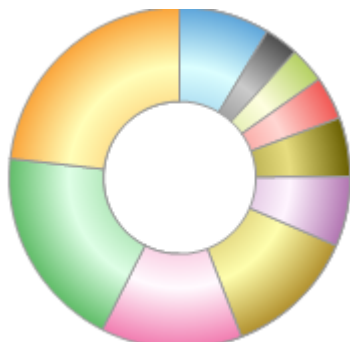
Rank	Regions	%
1	Japan	95.93
2	Cash & Cash Equivalents	4.07



Powered by data from FE fundinfo

## Sector Breakdown (30 Apr 2024)

Rank	Sectors	%
1	Industrials	23.20
2	Financials	19.29
3	Consumer Discretionary	13.40
4	Information Technology	12.63
5	Materials	6.64
6	Real Estate	5.60
7	Money Market	4.07
8	Health Care	3.42
9	Communications	3.18
10	Others	8.57



Powered by data from FE fundinfo

## Top Holdings (30 Apr 2024)

Rank	Largest Holdings	%
1	Hitachi Ltd.	5.19
2	Toyota Motor Corp.	4.88

# Liontrust Japan Equity C Acc GBP

Rank	Largest Holdings	%
3	Sumitomo Mitsui Financial Group, Inc.	3.26
4	Tokyo Electron Ltd.	3.26
5	Komatsu Ltd.	3.19
6	ENEOS Holdings, Inc.	3.07
7	MS&AD Insurance Group Holdings, Inc.	2.90
8	Kyushu Electric Power Company, Incorporated	2.78
9	Toyo Suisan Kaisha, Ltd.	2.70
10	Mitsubishi Heavy Industries, Ltd.	2.63