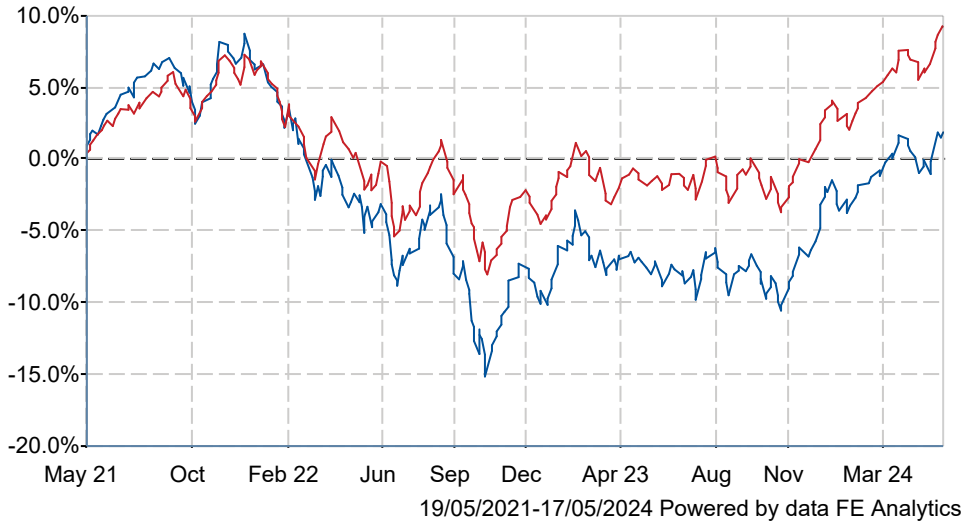


Embark Horizon Multi-Asset II Z Acc

What is the Fund's objective?

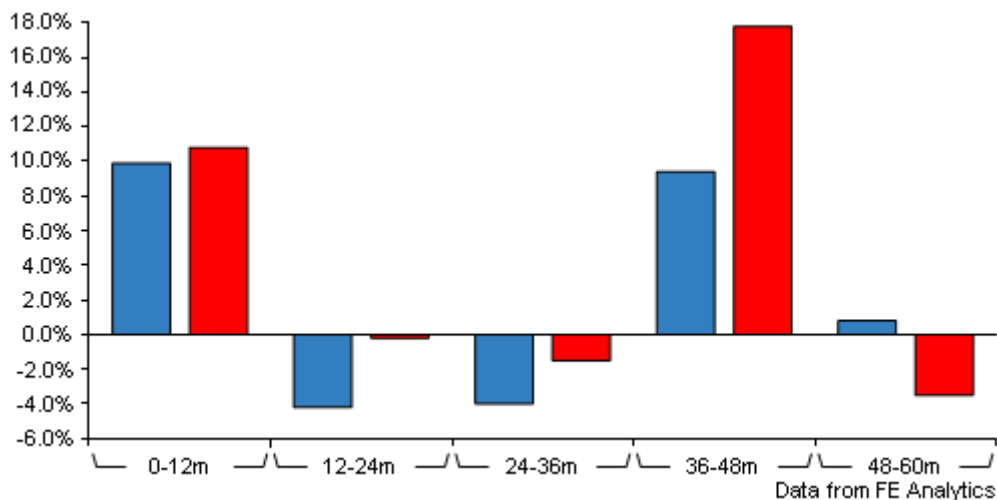
The aim of the fund is to grow the amount invested over the medium to long term (5 or more years) and to keep the fund within a designated risk profile.

Cumulative Performance



	3m	6m	1yr	3yrs	5yrs
Embark Horizon Multi-Asset II Z Acc	+3.3	+8.6	+9.9	+1.1	+11.5
IA Volatility Managed	+4.3	+9.0	+10.8	+8.9	+23.8

Discrete Performance



	0-12m	12m-24m	24m-36m	36m-48m	48m-60m
Embark Horizon Multi-Asset II Z Acc	+9.9	-4.2	-4.0	+9.4	+0.8
IA Volatility Managed	+10.8	-0.2	-1.5	+17.8	-3.5

All prices in Pence Sterling (GBX) unless otherwise specified. Price total return performance figures are calculated on a bid price to bid price basis (mid to mid for OEICs) with net income (dividends) reinvested. Performance figures are shown in Pound Sterling (GBP).

Fund Information

Sector	IA Volatility Managed
Asset Class	Mixed Asset
Launch Date	30-Mar-2015
Fund Size	£129.1m / \$164.0m (17-May-2024)
Fund Manager	Alex Lyle

How does FE fundinfo rate this fund?

FE fundinfo Crown Rating	
AFI	NO
Risk Score	68

Investment Details

Initial Charge	0.00%
Annual Charges	0.75%
Note to charges	n/a
Minimum Initial Investment	£ 1,000,000
Minimum Additional Investment	£ 50,000
Dividend Policy	May 31, Nov 30 (Final)

Prices

Unit Type	ACC
Mid	71.65(GBX)
Price Date	17 May 2024
Yield	1.38

Codes

Citicode	M47R
SEDOL	BTKH4B2
ISIN	GB00BTKH4B20

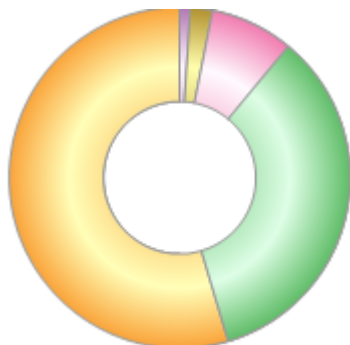
Contact Details

Address	7th Floor, 100 Cannon Street, London, EC4N 6EU
Website	embarkgroup.co.uk/

Embark Horizon Multi-Asset II Z Acc

Asset Allocation (29 Feb 2024)

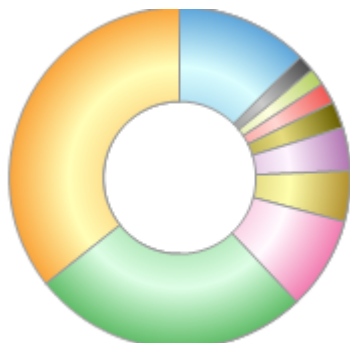
Rank	Asset Classes	%
1	UK Fixed Interest	54.61
2	Overseas Developed Equity	34.39
3	Emerging Markets Equity	7.93
4	UK Equity	2.08
5	Cash	0.99



Powered by data from FE fundinfo

Regional Breakdown (30 Apr 2024)

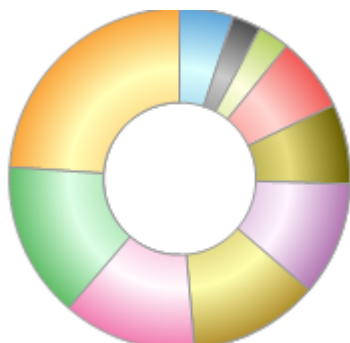
Rank	Regions	%
1	UK	35.62
2	USA	26.34
3	France	8.84
4	Germany	4.82
5	Japan	4.08
6	Netherlands	2.50
7	China	2.01
8	Italy	1.63
9	India	1.63
10	Others	12.53



Powered by data from FE fundinfo

Sector Breakdown (30 Apr 2024)

Rank	Sectors	%
1	AA	23.88
2	BBB+	14.78
3	BBB	12.71
4	A -	12.33
5	A	10.82
6	A+	7.63
7	AA -	7.13
8	BBB -	2.99
9	AA+	2.68
10	Others	5.05



Powered by data from FE fundinfo

Top Holdings (30 Apr 2024)

Rank	Largest Holdings	%
1	ISHS. CORE CORP BOND UCI	32.05
2	ISHS. CORE UK GILTS UCITS	18.91

Embark Horizon Multi-Asset II Z Acc

Rank	Largest Holdings	%
3	ISHS. CORE S&P 500 UCITS	18.00
4	ISHARES CORE EURO STOXX 5	11.05
5	ISHARES CORE MSCI EM IMI	8.43
6	INVESCO GBP CORPORATE	4.08
7	ISHS. CORE MSCI JAPAN IMI	3.98
8	ISHARES FTSE 100 UCITS ET	2.14