

# Fidelity Index Europe ex UK P Acc

## What is the Fund's objective?

The Fund aims to track the performance of the MSCI Europe ex UK (Gross Total Return) Index (before fees and expenses are applied) thereby seeking to increase the value of your investment over a period of 5 years or more. The performance of the Fund is unlikely to track the performance of the index precisely because the Fund incurs taxes that are not reflected in the index. Examples of tracking difference are explained in the Prospectus Notes below and the KIID. The Fund uses an 'index tracking' (also known as 'passive') investment management approach whereby it aims to replicate the composition of the index. However, for practical reasons and/or to reduce the dealing costs of the Fund, it may not invest in every company share in the index or at its weighting within the index. As well as investing directly in company shares, the Fund will achieve exposure indirectly through the use of derivatives for efficient portfolio management purposes, for example, at the time of cash inflows to remain fully invested or to reduce transaction costs. In order to manage the cash position, the Fund may invest in collective investment schemes (such as liquidity Funds), including those managed by Fidelity, money market instruments, cash and deposits. Many funds sold in the UK are grouped into sectors by the Investment Association (the trade body that represents UK Investment Managers), to facilitate comparison between funds with broadly similar characteristics. This Fund is classified in the IA Europe excluding UK sector. Performance data on funds within this sector may be prepared and published by data providers and will be used when evaluating the performance of this Fund. The IA sector most closely reflects the combination of assets in the Fund. For taxation reasons the Fund's performance can also be compared to the MSCI Europe ex UK (Net Total Return) Index.

## Cumulative Performance




	3m	6m	1yr	3yrs	5yrs
Fidelity Index Europe ex UK P Acc	+7.0	+14.1	+13.9	+27.5	+58.3

## Fund Information

Benchmark	n/a
Asset Class	Equity
Launch Date	22-Jan-2014
Fund Size	£637.0m / \$809.2m (30-Apr-2024)

## How does FE fundinfo rate this fund?

FE fundinfo Passive Rating	 P
Risk Score	111

## Investment Details

Initial Charge	0.00%
Annual Charges	0.10%
Note to charges	n/a
Minimum Initial Investment	£ 500
Minimum Additional Investment	£ 250
Dividend Policy	Mar 01 (Final), Jun 01, Sep 01, Dec 01

## Prices

Unit Type	ACC
Mid	230.72[GBX]
Price Date	17 May 2024
Yield	2.27

## Codes

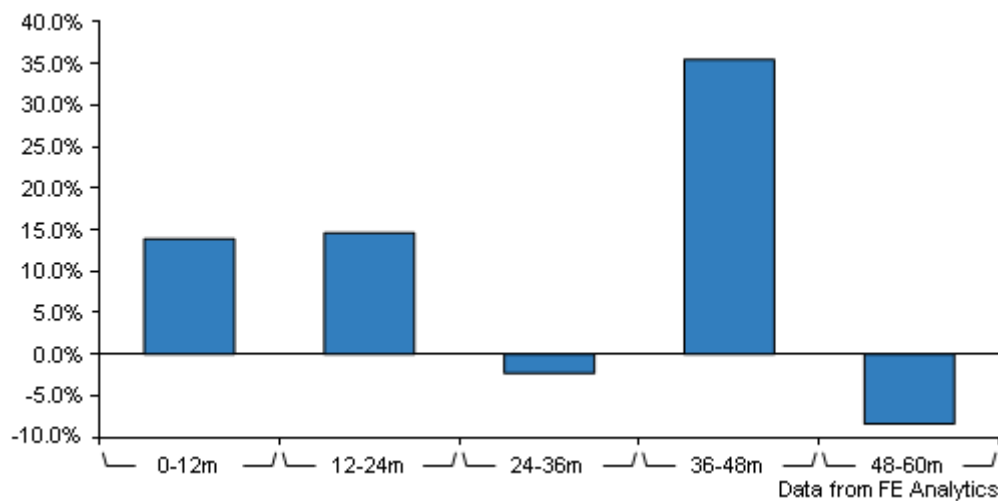
Citicode	K1XL
SEDOL	BHZK8B0
ISIN	GB00BHZK8B07

## Contact Details

Address	4 Cannon St, London, EC4M 5AB
Telephone numbers	0333 300 3350 (Main Number)
Website	<a href="http://www.fidelityinternational.com">www.fidelityinternational.com</a>

# Fidelity Index Europe ex UK P Acc

## Discrete Performance



	0-12m	12m-24m	24m-36m	36m-48m	48m-60m
Fidelity Index Europe ex UK P Acc	+13.9	+14.6	-2.3	+35.5	-8.4

All prices in Pence Sterling (GBX) unless otherwise specified. Price total return performance figures are calculated on a bid price to bid price basis (mid to mid for OEICs) with net income (dividends) reinvested. Performance figures are shown in Pound Sterling (GBP).

# Fidelity Index Europe ex UK P Acc

## Asset Allocation (30 Apr 2024)

Rank	Asset Classes	%
1	France Equities	24.00
2	Switzerland Equities	18.10
3	Germany Equities	17.10
4	Netherlands Equities	9.90
5	Denmark Equities	7.40
6	Sweden Equities	6.10
7	Italy Equities	5.50
8	Spain Equities	5.30
9	Others Equities	2.70
10	Others	3.90



Powered by data from FE fundinfo

## Regional Breakdown (30 Apr 2024)

Rank	Regions	%
1	France	24.00
2	Switzerland	18.10
3	Germany	17.10
4	Netherlands	9.90
5	Denmark	7.40
6	Sweden	6.10
7	Italy	5.50
8	Spain	5.30
9	Others	2.70
10	Others	3.90



Powered by data from FE fundinfo

## Sector Breakdown (30 Apr 2024)

Rank	Sectors	%
1	Financials	18.10
2	Industrials	17.50
3	Health Care	16.50
4	Consumer Discretionary	11.90
5	Information Technology	9.70
6	Consumer Staples	9.10
7	Materials	6.00
8	Utilities	3.80
9	Energy	3.40
10	Others	4.00



Powered by data from FE fundinfo

## Top Holdings (30 Apr 2024)

Rank	Largest Holdings	%
1	NOVO-NORDISK AS	5.10
2	ASML HOLDING NV	4.30

# Fidelity Index Europe ex UK P Acc

Rank	Largest Holdings	%
3	NESTLE SA	3.30
4	LVMH MOET HENNESSY SE	2.80
5	NOVARTIS AG	2.40
6	SAP SE	2.30
7	ROCHE HOLDING AG	2.10
8	TOTALENERGIES SE	1.90
9	SIEMENS AG	1.70
10	SCHNEIDER ELEC SA	1.50