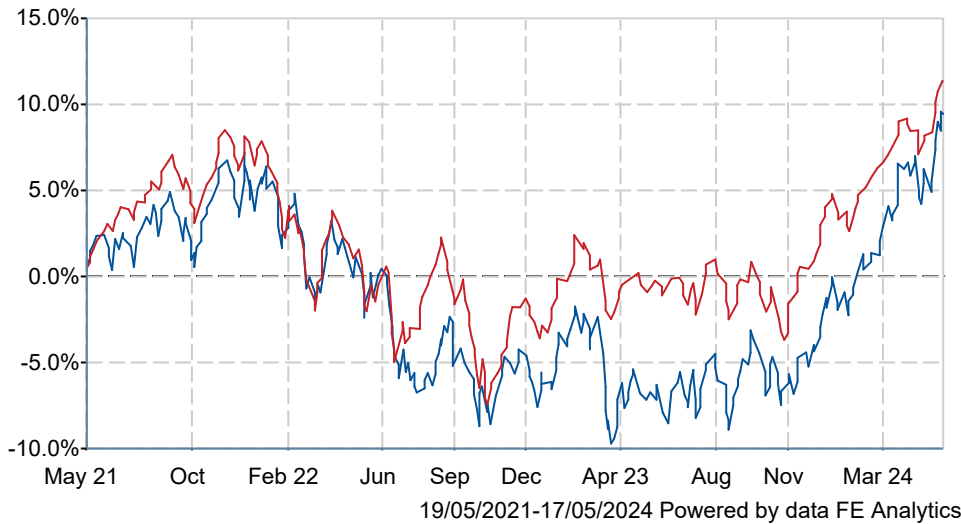




## Premier Miton Multi-Asset Growth & Income C Inc GBP

### What is the Fund's objective?

The aim of the fund is to grow the value of an original investment over the long term and provide investors with an income.

### Cumulative Performance



	3m	6m	1yr	3yrs	5yrs
 Premier Miton Multi-Asset Growth & Income C Inc GBP	+8.0	+15.1	+17.9	+8.6	+22.3
 IA Mixed Investment 40-85% Shares	+5.2	+10.6	+11.7	+11.1	+28.7
Rank within sector	9 / 218	2 / 218	6 / 213	128 / 196	130 / 169
Quartile	1	1	1	3	4

### Fund Information

Sector	IA Mixed Investment 40-85% Shares
Asset Class	Mixed Asset
Launch Date	11-Dec-2006
Fund Size	£272.6m / \$346.3m (17-May-2024)
Fund Manager	Anthony Rayner David Jane

### How does FE fundinfo rate this fund?

FE fundinfo Crown Rating	
AFI	NO
Risk Score	89

### Investment Details

Initial Charge	n/a
Annual Charges	0.75%
Note to charges	n/a
Minimum Initial Investment	£ 250,000
Minimum Additional Investment	£ 25,000
Dividend Policy	May 01, Nov 01 (Final)

### Prices

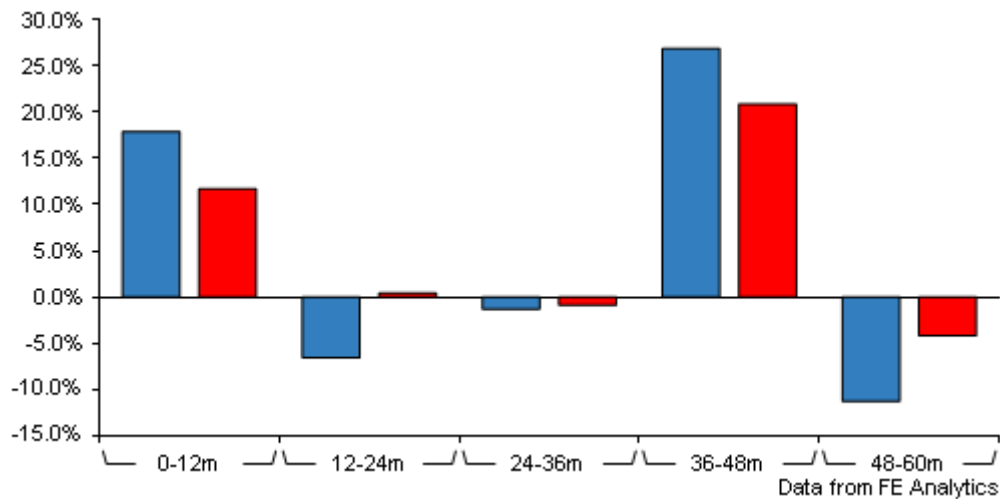
Unit Type	INC
Mid	169.20(GBX)
Price Date	17 May 2024
Yield	3.85

### Codes

Citicode	GH6K
SEDOL	B78H4K9
ISIN	GB00B78H4K93

# Premier Miton Multi-Asset Growth & Income C Inc GBP

## Discrete Performance



	0-12m	12m-24m	24m-36m	36m-48m	48m-60m
Premier Miton Multi-Asset Growth & Income C Inc GBP	+17.9	-6.6	-1.3	+26.9	-11.3
IA Mixed Investment 40-85% Shares	+11.7	+0.4	-0.9	+20.9	-4.2
Rank within sector	6 / 213	207 / 207	112 / 196	32 / 182	156 / 169
Quartile	1	4	3	1	4

All prices in Pence Sterling (GBX) unless otherwise specified. Price total return performance figures are calculated on a bid price to bid price basis (mid to mid for OEICs) with net income (dividends) reinvested. Performance figures are shown in Pound Sterling (GBP).

## Contact Details

Address	Premier Fund Managers Ltd, Eastgate Court, High Street, Guildford, Surrey, GU1 3DE
Telephone numbers	01483 306090 (Main Number)
Website	<a href="http://www.premiermiton.com">www.premiermiton.com</a>
Email	<a href="mailto:info@premiermiton.com">info@premiermiton.com</a>

# Premier Miton Multi-Asset Growth & Income C Inc GBP

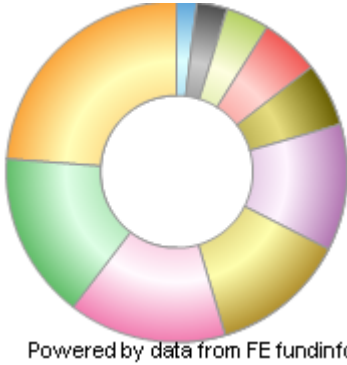
## Asset Allocation (28 Mar 2024)

Rank	Asset Classes	%
1	North American equities	23.80
2	Asia Pacific ex Japan equities	15.80
3	Europe ex UK equities	12.90
4	Japan equities	12.00
5	UK equities	11.20
6	Cash	6.00
7	Gold	4.50
8	Emerging markets equities	4.10
9	Global Corporate Fixed Interest	3.60
10	Others	6.10



## Regional Breakdown (28 Mar 2024)

Rank	Regions	%
1	North American equities	23.80
2	Asia Pacific ex Japan equities	15.80
3	UK property shares	15.00
4	Europe ex UK equities	12.90
5	Japan equities	12.00
6	Cash	6.00
7	Mortgage	5.60
8	Emerging markets equities	4.10
9	International sovereign bonds	2.90
10	Other	1.90



## Top Holdings (30 Apr 2024)

Rank	Largest Holdings	%
1	Invesco Physical Gold ETC USD ETF	4.33
2	WisdomTree Agriculture ETF	1.49
3	Intesa Sanpaolo	1.35
4	Diamondback Energy	1.35
5	WisdomTree Industrial Metals	1.28
6	Rolls-Royce Holdings	1.27
7	Credit Agricole	1.27
8	Alphabet	1.27
9	Tidewater	1.22
10	Microsoft	1.21