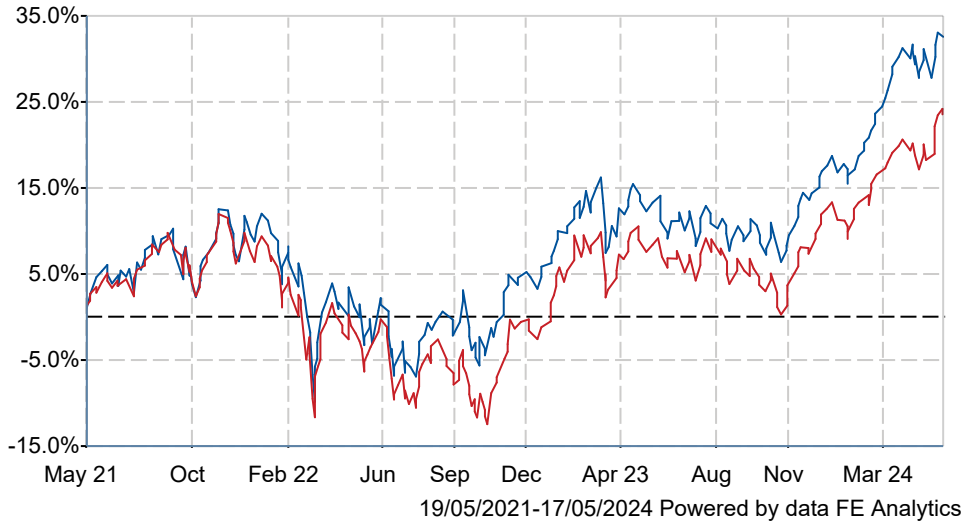


JPM Europe Dynamic Ex UK C Acc

What is the Fund's objective?

To maximise long-term capital growth by investing primarily in continental European Equities.

Cumulative Performance



	3m	6m	1yr	3yrs	5yrs
JPM Europe Dynamic Ex UK C Acc	+8.5	+16.5	+17.5	+31.9	+68.7
IA Europe Excluding UK	+7.0	+14.0	+13.2	+22.8	+56.3
Rank within sector	45 / 143	23 / 143	32 / 143	19 / 136	20 / 129
Quartile	2	1	1	1	1

Fund Information

Sector	IA Europe Excluding UK
Asset Class	Equity
Launch Date	30-Sep-2004
Fund Size	£505.7m / \$642.4m (17-May-2024)
Fund Manager	Jonathan Ingram Blake Crawford Alexander Whyte

How does FE fundinfo rate this fund?

FE fundinfo Crown Rating	
AFI	NO
Risk Score	101

Other ratings

Morningstar Analyst Rating



Investment Details

Initial Charge	0.00%
Annual Charges	0.75%
Note to charges	Initial Charges: max.;
Minimum Initial Investment	£ 5,000,000
Minimum Additional Investment	£ 100,000
Dividend Policy	Feb 01 (Final)

Prices

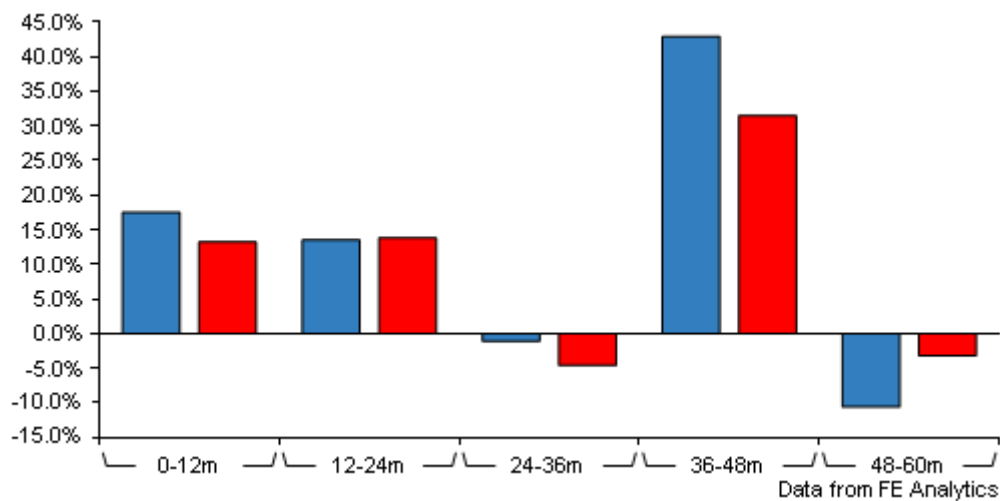
Unit Type	ACC
Mid	381.20(GBX)
Price Date	17 May 2024
Yield	1.69

Codes

Citicode	GPUK
SEDOL	B845HL6
ISIN	GB00B845HL62

JPM Europe Dynamic Ex UK C Acc

Discrete Performance



	0-12m	12m-24m	24m-36m	36m-48m	48m-60m
JPM Europe Dynamic Ex UK C Acc	+17.5	+13.5	-1.1	+42.9	-10.6
IA Europe Excluding UK	+13.2	+13.8	-4.6	+31.5	-3.2
Rank within sector	32 / 143	67 / 142	28 / 136	28 / 131	76 / 129
Quartile	1	2	1	1	3

All prices in Pence Sterling (GBX) unless otherwise specified. Price total return performance figures are calculated on a bid price to bid price basis (mid to mid for OEICs) with net income (dividends) reinvested. Performance figures are shown in Pound Sterling (GBP).

Contact Details

Address 60 Victoria Embankment, London, E
0JP

Telephone numbers +44-1268444470 (Main Number)

Website www.jpmmorganassetmanagement.com

Email ifaenquiry@jpmmorgan.com

JPM Europe Dynamic Ex UK C Acc

Asset Allocation (31 Mar 2024)

Rank	Asset Classes	%
1	French Equities	28.50
2	German Equities	14.80
3	Italian Equities	9.60
4	Dutch Equities	9.30
5	Spanish Equities	8.10
6	Danish Equities	7.40
7	Swedish Equities	5.60
8	Irish Equities	5.10
9	Swiss Equities	3.60
10	Others	8.00



Powered by data from FE fundinfo

Regional Breakdown (31 Mar 2024)

Rank	Regions	%
1	France	28.50
2	Germany	14.80
3	Italy	9.60
4	Netherlands	9.30
5	Spain	8.10
6	Denmark	7.40
7	Sweden	5.60
8	Ireland	5.10
9	Switzerland	3.60
10	Others	8.00



Powered by data from FE fundinfo

Sector Breakdown (31 Mar 2024)

Rank	Sectors	%
1	Banks	10.10
2	Industrial Support Services	8.90
3	Construction And Materials	8.50
4	Pharmaceuticals And Biotechnology	8.20
5	Oil, Gas And Coal	6.90
6	Travel And Leisure	5.80
7	Non-Life Insurance	5.20
8	Electronic And Electrical Equipment	4.90
9	Software And Computer Services	4.70
10	Others	36.80



Powered by data from FE fundinfo

Top Holdings (31 Mar 2024)

Rank	Largest Holdings	%
1	Novo Nordisk	6.50
2	UniCredit	3.40

JPM Europe Dynamic Ex UK C Acc

Rank	Largest Holdings	%
3	ASML	3.20
4	Air Liquide	2.90
5	TotalEnergies	2.70
6	Allianz	2.60
7	Fiat Chrysler Automobiles	2.30
8	Industria de Diseno Textil	2.20
9	VINCI	2.10
10	Banco Santander	2.10