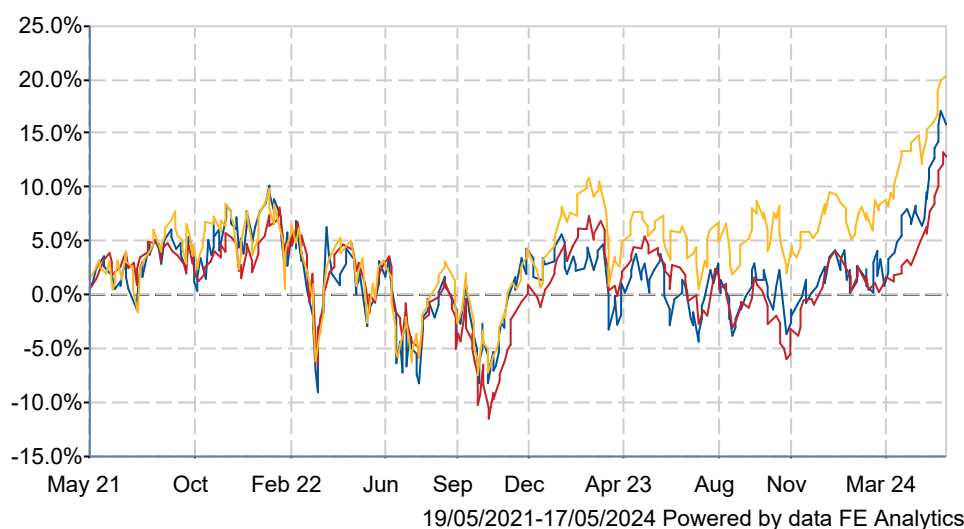


JPMorgan Claverhouse IT plc

What is the Fund's objective?

The Company aims to provide capital and income from UK investments. It will invest in a portfolio consisting mostly of companies listed on the London Stock Exchange. The Company's portfolio consists of between 60 and 80 individual equities in which the Manager has high conviction. The Company typically invests directly although it may also take positions in pooled vehicles to gain exposure to such companies. Returns are principally determined by the performance of the investments made by The Company. Gearing may magnify gains or losses experienced by The Company.

Cumulative Performance




	3m	6m	1yr	3yrs	5yrs
JPMorgan Claverhouse IT plc	+12.4	+14.9	+13.2	+15.2	+31.0
UK Equity Income	+11.6	+13.4	+8.9	+12.3	+27.8
NAV	+10.5	+13.1	+13.0	+19.7	+29.7
Rank within sector	10 / 18	6 / 18	6 / 18	9 / 18	7 / 18
Quartile	3	2	2	2	2

Fund Information

Sector	UK Equity Income
Asset Class	Equity
Launch Date	24-Apr-1963
Fund Size	£422.2m / \$536.4m (17-May-2024)
Fund Manager	William Meadon Callum Abbot

How does FE fundinfo rate this fund?

FE fundinfo Crown Rating	
AFI	NO
Risk Score	118

Investment Details

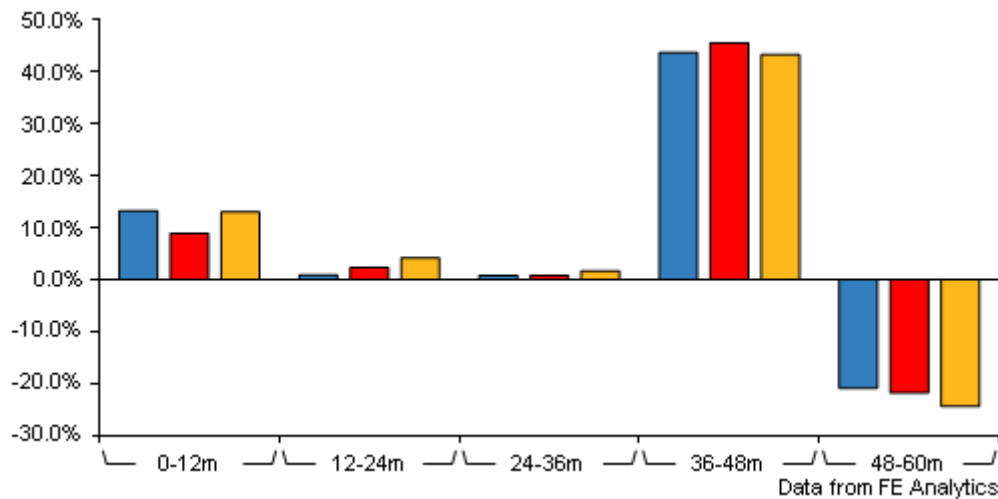
Initial Charge	0.00%
Annual Charges	0.52%
Note to charges	n/a
Minimum Initial Investment	£ 1,000
Minimum Additional Investment	£ 100
Dividend Policy	n/a

Management Contract

The Management fee is charged at 0.55% of the value of the Company's market capitalisation, calculated and paid monthly in arrears. There is also a performance-related fee, which is calculated with reference to 15% of the difference between the movement of the Company's total return compared to that of the FTSE All-Share Index, plus a hurdle rate of 0.5%. The fee is calculated annually, with any under-performance carried forward and offset against any future out-performance. The actual amount paid in respect of performance fees in any one year is subject to a cap of 0.4% of total assets. The contract is terminable on one years notice or 6 months in the event of poor investment performance.

JPMorgan Claverhouse IT plc

Discrete Performance



	0-12m	12m-24m	24m-36m	36m-48m	48m-60m
JPMorgan Claverhouse IT plc	+13.2	+0.9	+0.8	+43.7	-20.9
UK Equity Income	+8.9	+2.3	+0.8	+45.6	-21.8
NAV	+13.0	+4.2	+1.7	+43.3	-24.4
Rank within sector	6 / 18	16 / 18	11 / 18	9 / 18	10 / 18
Quartile	2	4	3	2	3

All prices in Pence Sterling (GBX) unless otherwise specified. Price total return performance figures are calculated using closing mid prices and with net income (dividends) reinvested. NAV total return performance figures are calculated using fully diluted (where applicable) daily estimated NAV figures from Thomson Financial Datastream. Performance figures are shown in Pound Sterling (GBP).

Prices

Unit Type	ACC
Mid	738.00(GBX)
Price Date	17 May 2024
Yield	4.71
Discount	-5.03
Diluted NAV	
- Estimate	777.05
- Last Published	777.05 (16-May-2024)

Codes

Citicode	HX69
SEDOL	0342218
ISIN	GB0003422184
TIDM	JCH

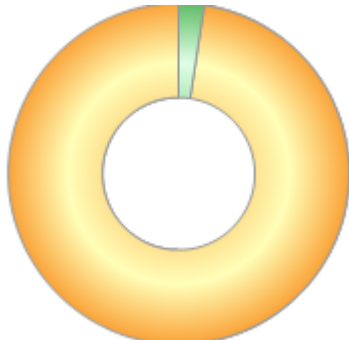
Contact Details

Address	25 Bank St, Canary Wharf, London, E14 5JP
Telephone numbers	0800 727 770 (Main Number)
Website	am.jpmorgan.com/uk
Email	uk.sales.support@jpmorgan.com

JPMorgan Claverhouse IT plc

Asset Allocation (31 Mar 2024)

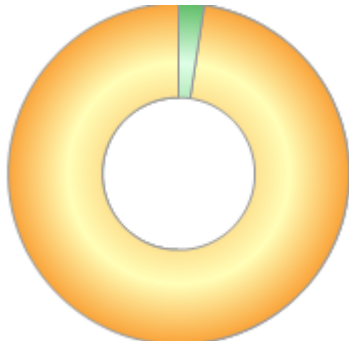
Rank	Asset Classes	%
1	UK Equities	97.60
2	Cash	2.40



Powered by data from FE fundinfo

Regional Breakdown (31 Mar 2024)

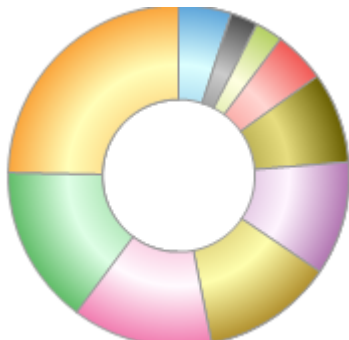
Rank	Regions	%
1	UK	97.60
2	Cash	2.40



Powered by data from FE fundinfo

Sector Breakdown (31 Mar 2024)

Rank	Sectors	%
1	Financials	24.70
2	Consumer Discretionary	15.10
3	Energy	13.30
4	Industrials	12.40
5	Consumer Staples	10.80
6	Health Care	8.60
7	Basic Materials	4.90
8	Technology	2.60
9	Real Estate	2.60
10	Others	5.00



Powered by data from FE fundinfo

Top Holdings (31 Mar 2024)

Rank	Largest Holdings	%
1	Shell	8.50
2	AstraZeneca	5.90

JPMorgan Claverhouse IT plc

Rank	Largest Holdings	%
3	HSBC	5.30
4	BP	4.70
5	3i Group	3.70
6	BAE System	3.60
7	Rio Tinto	3.30
8	Rolls Royce	3.10
9	Unilever	3.00
10	JPM UK Small Cap Growth & Income	3.00