

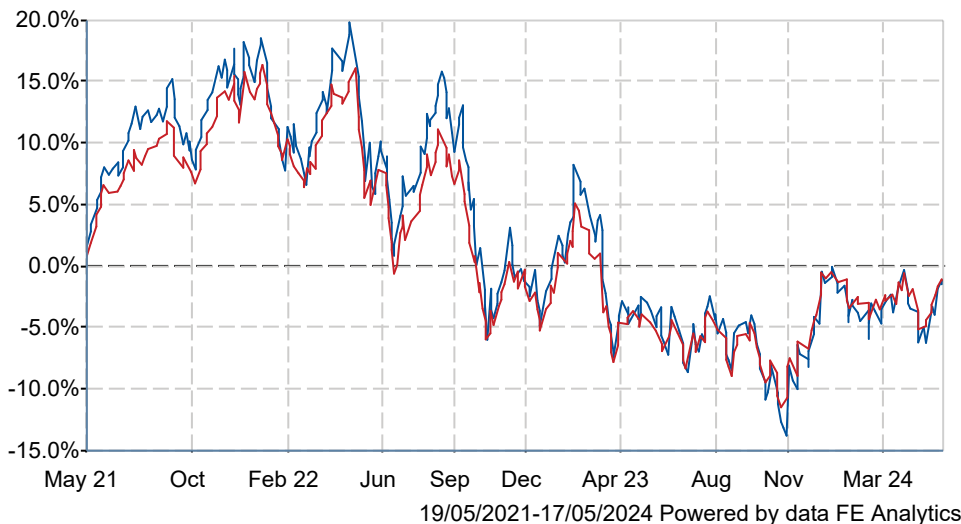
## Janus Henderson Horizon Global Property Equities H2 Acc EUR

### What is the Fund's objective?

**Investment Objective** The Fund aims to provide capital growth over the long term.

**Investment Policy** The Fund invests at least 80% of its net assets in equities or equity-related instruments of real estate companies or Real Estate Investment Trusts (or their equivalents) listed or traded on a regulated market, that derive the main part of their revenue from owning, developing and managing real estate. The Fund may invest in companies of any size, including smaller capitalisation companies, in any country. Equity-related instruments may include depository receipts. The Fund may use derivative instruments (such as futures, forwards, options and warrants) to reduce risk and to manage the Fund more efficiently. Under no circumstances shall the use of these instruments and techniques cause a Fund to diverge from its investment policy. On an ancillary basis and for defensive purposes, the Fund may invest in: • investment grade government bonds and associated derivative instruments; • cash and money market instruments.

### Cumulative Performance



	3m	6m	1yr	3yrs	5yrs
Janus Henderson Horizon Global Property Equities H2 Acc EUR	+1.5	+6.0	+3.7	-1.3	+8.7
Property - International	+2.1	+5.4	+4.7	-1.8	-1.7
Rank within sector	37 / 62	41 / 62	45 / 59	37 / 52	12 / 45
Quartile	3	3	4	3	1

### Fund Information

Sector	Property - International
Asset Class	Property
Launch Date	03-Jan-2005
Fund Size	€955.3m / \$1,213.7m (17-May-2024)
Fund Manager	Guy Barnard Tim Gibson Greg Kuhl

### How does FE fundinfo rate this fund?

Alpha Manager Rating	Guy Barnard
FE fundinfo Crown Rating	★★★★★
AFI	NO
Risk Score	n/a

### Investment Details

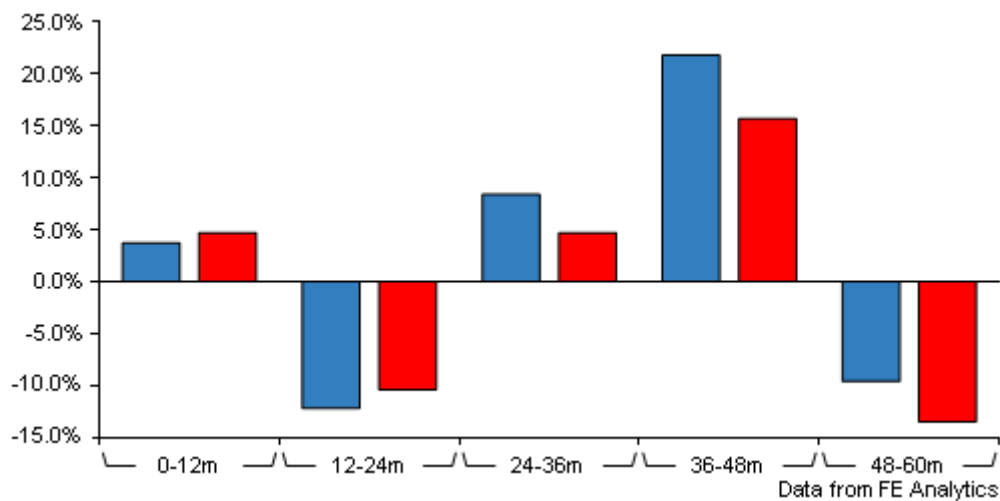
Initial Charge	5.00%
Annual Charges	0.60%
Note to charges	n/a
Minimum Initial Investment	€ 7,500
Minimum Additional Investment	€ 2,500
Dividend Policy	Jan 02, Feb 01, Mar 01, Apr 01, May 01, Jun 01, Jul 01, Aug 01, Sep 01, Oct 01, Nov 01, Dec 01 (Final)

### Prices

Unit Type	ACC
Mid	20.55(EUR)
Price Date	17 May 2024
Yield	n/a

# Janus Henderson Horizon Global Property Equities H2 Acc EUR

## Discrete Performance



	0-12m	12m-24m	24m-36m	36m-48m	48m-60m
Janus Henderson					
Horizon Global Property Equities H2 Acc EUR	+3.7	-12.2	+8.4	+21.8	-9.6
Property - International	+4.7	-10.4	+4.7	+15.7	-13.5
Rank within sector	45 / 59	26 / 55	32 / 52	23 / 49	7 / 45
Quartile	4	2	3	2	1

Price total return performance figures are calculated on a bid price to bid price basis (mid to mid where applicable) with gross income (dividends) reinvested. Performance figures are shown in Pound Sterling (GBP).

## Codes

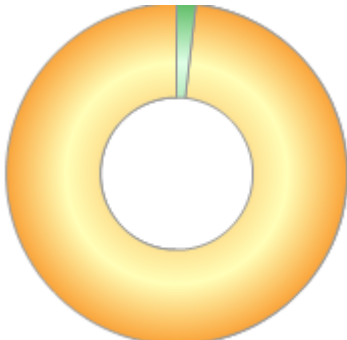
Citicode	FBXZ
SEDOL	BD032M5
ISIN	LU0892275263

## Contact Details

Address	78, Avenue de la Liberté, Luxembourg, L-1930
Telephone numbers	+352 26 19 21 24 (Main Number)
Website	<a href="http://www.janushenderson.com">www.janushenderson.com</a>
Email	<a href="mailto:horizon@henderson.com">horizon@henderson.com</a>

Asset Allocation (31 Mar 2024)

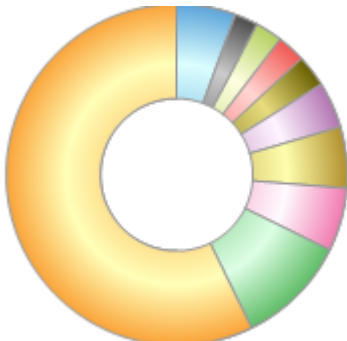
Rank	Asset Classes	%
1	Property	98.21
2	Cash	1.79



Powered by data from FE fundinfo

Regional Breakdown (31 Mar 2024)

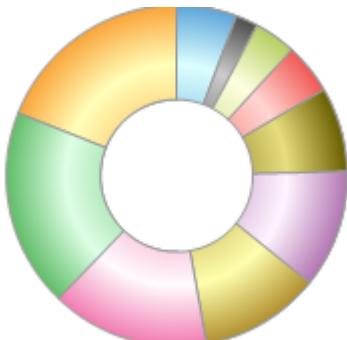
Rank	Regions	%
1	United States	57.25
2	Japan	10.48
3	Australia	5.97
4	United Kingdom	5.75
5	Canada	4.40
6	Singapore	3.01
7	Germany	2.67
8	Hong Kong	2.62
9	Spain	2.23
10	Others	5.62



Powered by data from FE fundinfo

Sector Breakdown (31 Mar 2024)

Rank	Sectors	%
1	Other Specialty REITs	19.04
2	Real Estate Services	18.82
3	Industrial REITs	14.95
4	Residential REITs	11.41
5	Retail REITs	11.15
6	Health Care REITs	8.02
7	Office REITs	4.82
8	Storage REITs	4.01
9	Infrastructure REITs	2.08
10	Others	5.70



Powered by data from FE fundinfo

Top Holdings (31 Mar 2024)

Rank	Largest Holdings	%
1	Equinix	6.49
2	Prologis	5.96

# Janus Henderson Horizon Global Property Equities H2 Acc EUR

Rank	Largest Holdings	%
3	Welltower	5.06
4	AvalonBay Communities	3.87
5	Extra Space Storage	3.81
6	CubeSmart	3.22
7	Sabra Health Care REIT	2.95
8	Goodman Group	2.86
9	UDR	2.66
10	Mitsui Fudosan	2.65