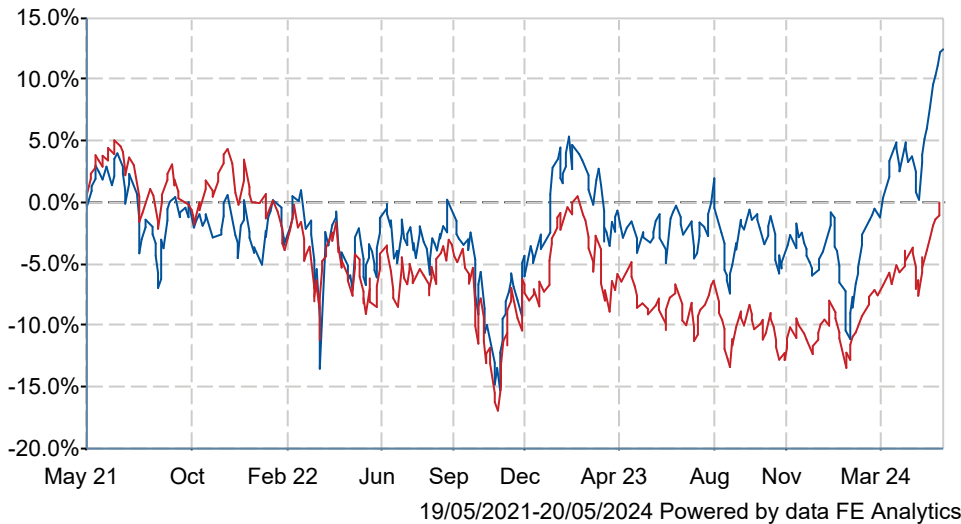




## Federated Hermes Asia ex-Japan Equity F Acc GBP

### What is the Fund's objective?

The investment objective of the Fund is to achieve long-term capital appreciation by investing primarily in a portfolio of equity securities and equity related securities (such a global depository receipts and American depository receipts) issued by companies in or deriving substantial revenues from emerging countries within the Asia ex-Japan region.

### Cumulative Performance



	3m	6m	1yr	3yrs	5yrs
 Federated Hermes Asia ex-Japan Equity F Acc GBP	+14.0	+15.7	+15.2	+14.3	+42.2
 IA Asia Pacific Excluding Japan	+8.4	+10.6	+8.9	-0.3	+31.2
Rank within sector	5 / 119	7 / 119	16 / 118	17 / 112	24 / 105
Quartile	1	1	1	1	1

### Fund Information

Sector	IA Asia Pacific Excluding Japan
Asset Class	Equity
Launch Date	01-Nov-2012
Fund Size	£2,481.8m / \$3,152.9m (17-May-2024)
Fund Manager	Jonathan Pines Sandy Pei

### How does FE fundinfo rate this fund?

Alpha Manager Rating	Jonathan Pines
FE fundinfo Crown Rating	
AFI	 AFI  AFI
Risk Score	149

### Investment Details

Initial Charge	n/a
Annual Charges	0.75%
Note to charges	n/a
Minimum Initial Investment	£ 100,000
Minimum Additional Investment	n/a
Dividend Policy	Jan 02 (Final), Jul 01

### Prices

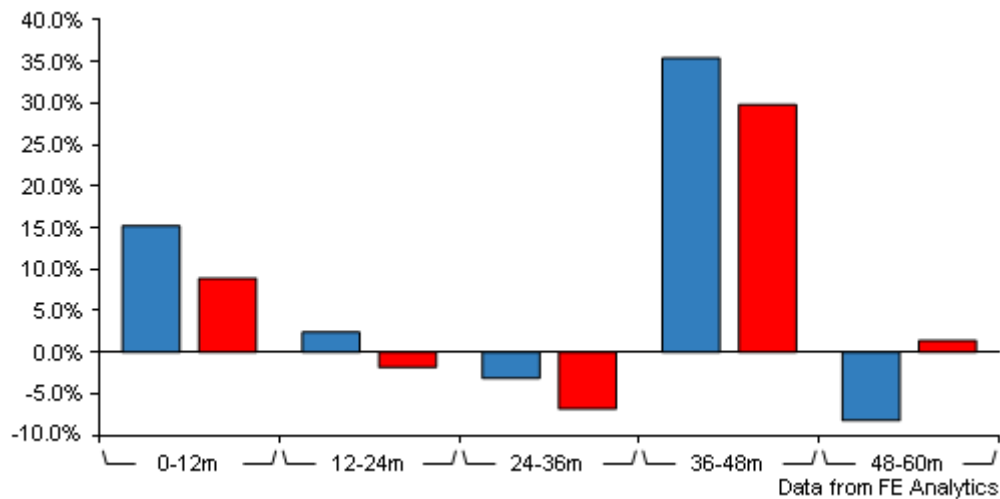
Unit Type	ACC
Mid	3.58(GBP)
Price Date	20 May 2024
Yield	0.00

### Codes

Citicode	GVYW
SEDOL	B8449Z1
ISIN	IE00B8449Z10

# Federated Hermes Asia ex-Japan Equity F Acc GBP

## Discrete Performance



	0-12m	12m-24m	24m-36m	36m-48m	48m-60m
Federated Hermes Asia ex-Japan Equity F Acc GBP	+15.2	+2.4	-3.1	+35.4	-8.2
IA Asia Pacific Excluding Japan	+8.9	-1.8	-6.8	+29.8	+1.4
Rank within sector	16 / 118	12 / 117	44 / 112	34 / 107	80 / 105
Quartile	1	1	2	2	4

All prices in Pence Sterling (GBX) unless otherwise specified. Price total return performance figures are calculated on a bid price to bid price basis (mid to mid for OEICs) with net income (dividends) reinvested. Performance figures are shown in Pound Sterling (GBP).

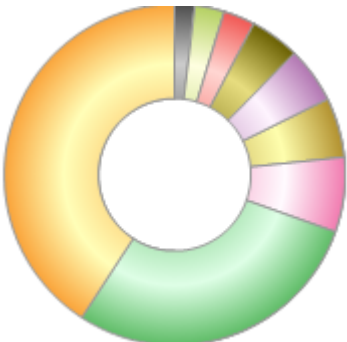
## Contact Details

Address	Sixth Floor, 150 Cheapside, London, EC2V 6ET
Telephone numbers	(+)44 (0)20 7702 0888 (Main Number)
Website	<a href="http://www.hermes-investment.com">www.hermes-investment.com</a>
Email	<a href="mailto:marketing@hermes-investment.com">marketing@hermes-investment.com</a>

# Federated Hermes Asia ex-Japan Equity F Acc GBP

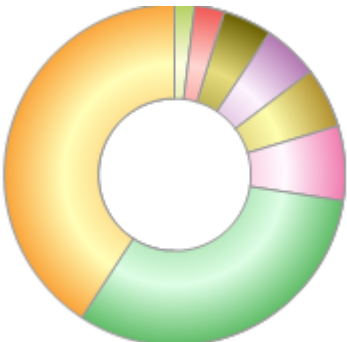
## Asset Allocation (30 Apr 2024)

Rank	Asset Classes	%
1	Chinese Equities	40.90
2	South Korean Equities	28.80
3	Taiwanese Equities	7.12
4	Thai Equities	5.71
5	US Equities	5.28
6	Hong Kong Equities	4.65
7	Preference Shares	3.01
8	Swiss Equities	2.84
9	Indian Equities	1.91
10	Money Market	-0.22



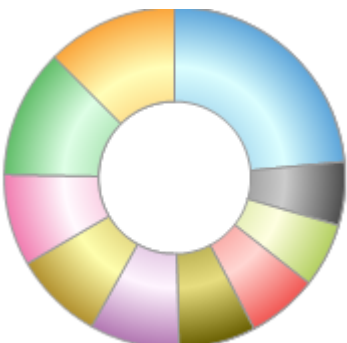
## Regional Breakdown (30 Apr 2024)

Rank	Regions	%
1	China	40.90
2	Korea	31.81
3	Taiwan	7.12
4	Thailand	5.71
5	USA	5.28
6	Hong Kong	4.65
7	Switzerland	2.84
8	India	1.91
9	Cash & Cash Equivalents	-0.22



## Sector Breakdown (30 Apr 2024)

Rank	Sectors	%
1	Hardware	12.52
2	Media	12.16
3	Consumer Durables	8.72
4	Consumer Discretionary	8.51
5	Banks	8.46
6	Automotive	7.27
7	Semi Conductors	6.69
8	Food, Beverages and Tobacco	6.14
9	Materials	5.99
10	Others	23.54



## Top Holdings (30 Apr 2024)

Rank	Largest Holdings	%
1	SAMSUNG ELECTRONICS CO KR	8.62
2	KB FINANCIAL GROUP INC KR	4.38

## Federated Hermes Asia ex-Japan Equity F Acc GBP

Rank	Largest Holdings	%
3	BAIDU INC SPON ADS EACH R	4.33
4	SAMSUNG FIRE & MARINE KRW	4.03
5	TENCENT HOLDINGS LIMITED	3.97
6	CK HUTCHISON HOLDINGS LIM	3.03
7	TAIWAN SEMICONDUCTOR MANU	2.98
8	SWATCH GROUP CHF2.25(BR)	2.84
9	AAC TECHNOLOGIES HOLDINGS	2.64
10	JD COM INC SPONSORED ADR	2.56