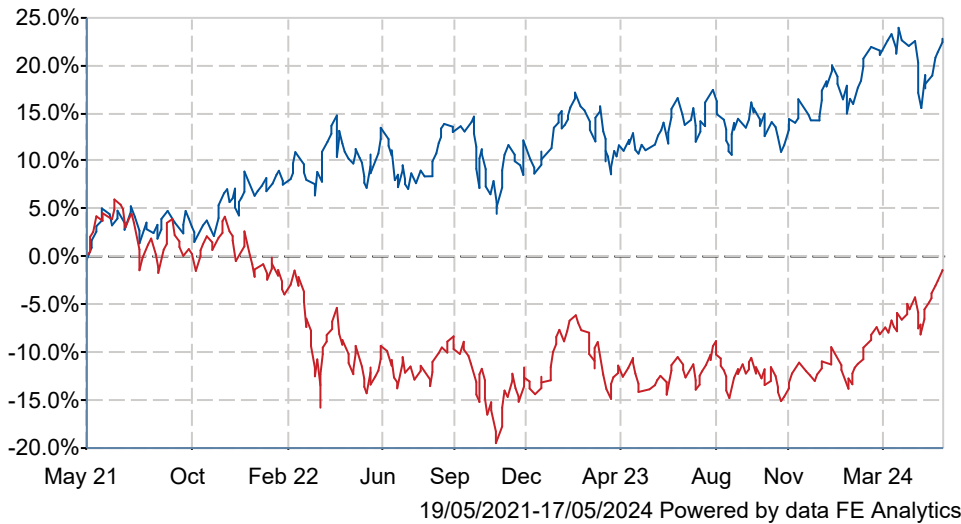


BNY Mellon Emerging Income Inst W Acc

What is the Fund's objective?

To achieve income together with capital growth over the long term (5 years or more).

Cumulative Performance



	3m	6m	1yr	3yrs	5yrs
BNY Mellon Emerging Income Inst W Acc	+0.6	+5.6	+9.9	+22.7	+36.1
IA Global Emerging Markets	+7.4	+11.3	+13.7	-0.7	+23.1
Rank within sector	166 / 168	156 / 168	131 / 166	13 / 152	31 / 132
Quartile	4	4	4	1	1

Fund Information

Sector	IA Global Emerging Markets
Asset Class	Equity
Launch Date	04-Oct-2012
Fund Size	£141.3m / \$179.6m (30-Apr-2024)
Fund Manager	Zoe Kan

How does FE fundinfo rate this fund?

FE fundinfo Crown Rating	★★★★★
AFI	NO
Risk Score	97

Investment Details

Initial Charge	0.00%
Annual Charges	0.75%
Note to charges	Initial Charges: max.;
Minimum Initial Investment	£ 500,000
Minimum Additional Investment	n/a
Dividend Policy	Jan 01, Apr 01, Jul 01, Oct 01 (Final)

Prices

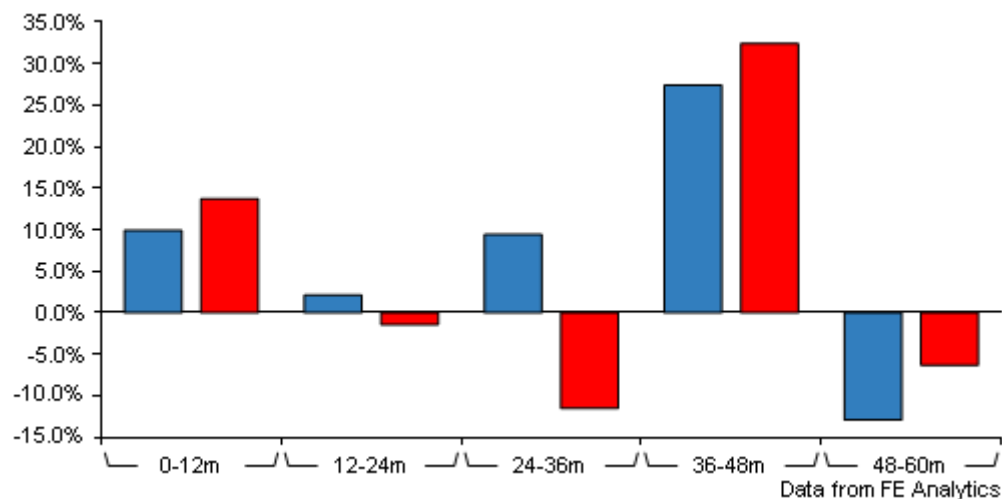
Unit Type	ACC
Mid	168.52[GBX]
Price Date	17 May 2024
Yield	3.73

Codes

Citicode	GVED
SEDOL	B8GGF46
ISIN	GB00B8GGF462

BNY Mellon Emerging Income Inst W Acc

Discrete Performance



	0-12m	12m-24m	24m-36m	36m-48m	48m-60m
BNY Mellon Emerging Income Inst W Acc	+9.9	+2.1	+9.4	+27.4	-12.9
IA Global Emerging Markets	+13.7	-1.4	-11.5	+32.4	-6.3
Rank within sector	131 / 166	26 / 160	3 / 152	98 / 138	116 / 132
Quartile	4	1	1	3	4

All prices in Pence Sterling (GBX) unless otherwise specified. Price total return performance figures are calculated on a bid price to bid price basis (mid to mid for OEICs) with net income (dividends) reinvested. Performance figures are shown in Pound Sterling (GBP).

Contact Details

Address BNY Mellon Centre, 160
Queen Victoria Street,
London, EC4V 4LA

Telephone numbers 0207 163 8888 (Main Number)

Website www.bnymellonim.com

Email salessupport@bnymellon.com

BNY Mellon Emerging Income Inst W Acc

Asset Allocation (31 Mar 2024)

Rank	Asset Classes	%
1	Taiwanese Equities	19.65
2	South Korean Equities	13.30
3	Indian Equities	13.11
4	Mexican Equities	11.32
5	Indonesian Equities	10.67
6	Brazilian Equities	7.79
7	Hong Kong Equities	6.26
8	Australian Equities	3.52
9	UK Equities	3.52
10	Others	10.86



Powered by data from FE fundinfo

Regional Breakdown (30 Apr 2024)

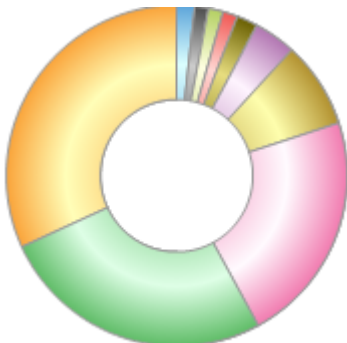
Rank	Regions	%
1	Taiwan	19.77
2	India	14.54
3	Korea	12.94
4	Mexico	11.33
5	Indonesia	9.87
6	Brazil	8.04
7	Hong Kong	6.21
8	Australia	3.44
9	UK	3.16
10	Others	10.70



Powered by data from FE fundinfo

Sector Breakdown (30 Apr 2024)

Rank	Sectors	%
1	Information Technology	31.90
2	Financials	26.05
3	Consumer Staples	22.11
4	Communication Services	8.18
5	Utilities	3.97
6	Energy	2.03
7	Materials	1.41
8	Health Care	1.36
9	Real Estate	1.26
10	Others	1.73



Powered by data from FE fundinfo

Top Holdings (30 Apr 2024)

Rank	Largest Holdings	%
1	Taiwan Semiconductor Manufacturing Co., Ltd.	9.14
2	Samsung Electronics Co., Ltd.	7.35

BNY Mellon Emerging Income Inst W Acc

Rank	Largest Holdings	%
3	ITC Limited	5.43
4	PT Bank Mandiri (Persero) Tbk	4.41
5	Grupo Financiero Banorte SAB de CV Class O	4.35
6	Wal-Mart de Mexico SAB de CV	4.22
7	AIA Group Limited	3.20
8	Tata Consultancy Services Limited	3.03
9	PT Bank Rakyat Indonesia (Persero) Tbk Class B	2.99
10	Credicorp Ltd.	2.98