



IFSL Marlborough Bond Income P Inc

What is the Fund's objective?

The aim of the Fund is to provide income, that is, money paid out from an investment as interest, with the potential for some capital growth, that is, to increase the value of your investment. The Fund aims to outperform the average of the IA Sterling Corporate Bond sector over any 5 year period, after any charges have been taken out of the Fund. However, there is no certainty this will be achieved.

Cumulative Performance



	3m	6m	1yr	3yrs	5yrs
 IFSL Marlborough Bond Income P Inc	+2.1	+5.3	+7.5	-8.5	-2.5
 IA Sterling Corporate Bond	+1.8	+5.1	+8.5	-6.7	+2.2
Rank within sector	43 / 97	34 / 95	44 / 95	53 / 90	69 / 85
Quartile	2	2	2	3	4

Fund Information

Sector	IA Sterling Corporate Bond
Asset Class	Fixed Interest
Launch Date	09-Sep-1998
Fund Size	£8.4m / \$10.7m (30-Apr-2024)
Fund Manager	Danny Fox Niall McDermott

How does FE fundinfo rate this fund?

FE fundinfo Crown Rating	
AFI	NO
Risk Score	61

Investment Details

Initial Charge	0.00%
Annual Charges	0.38%
Note to charges	n/a
Minimum Initial Investment	£ 1,000
Minimum Additional Investment	£ 1,000
Dividend Policy	Feb 28, May 31 (Final), Aug 31, Nov 30

Prices

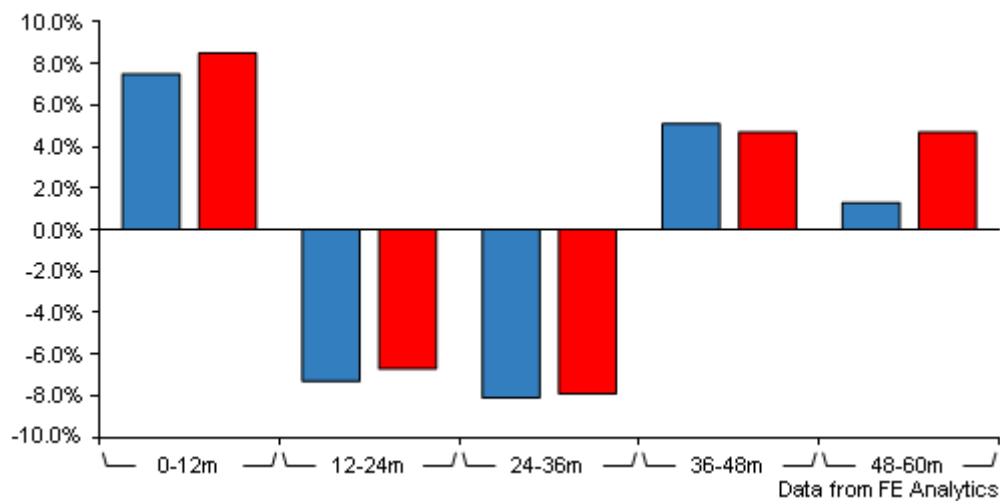
Unit Type	INC
Mid	44.76(GBX)
Price Date	17 May 2024
Yield	4.20

Codes

Citicode	I30E
SEDOL	B8P5889
ISIN	GB00B8P58897

IFSL Marlborough Bond Income P Inc

Discrete Performance



	0-12m	12m-24m	24m-36m	36m-48m	48m-60m
IFSL Marlborough Bond Income P Inc	+7.5	-7.3	-8.1	+5.1	+1.3
IA Sterling Corporate Bond	+8.5	-6.7	-7.9	+4.7	+4.7
Rank within sector	44 / 95	45 / 93	60 / 90	36 / 90	70 / 85
Quartile	2	2	3	2	4

All prices in Pence Sterling (GBX) unless otherwise specified. Price total return performance figures are calculated on a bid price to bid price basis (mid to mid for OEICs) with net income (dividends) reinvested. Performance figures are shown in Pound Sterling (GBP).

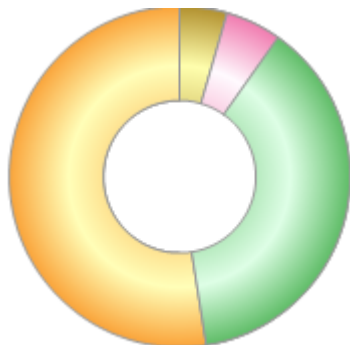
Contact Details

Address	Investment Fund Services Limited, 59, Chorley New Road, Bolton BL1 4QP
Telephone numbers	0808 178 9321 (Main Number)
Website	www.ifslfunds.com
Email	enquiries@ifslfunds.com

IFSL Marlborough Bond Income P Inc

Asset Allocation (01 May 2024)

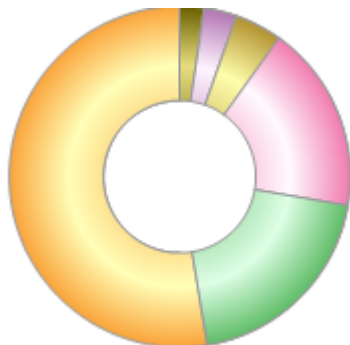
Rank	Asset Classes	%
1	UK Bonds	52.50
2	International Bonds	37.70
3	Other	5.30
4	Cash and Equivalents	4.50



Powered by data from FE fundinfo

Regional Breakdown (01 May 2024)

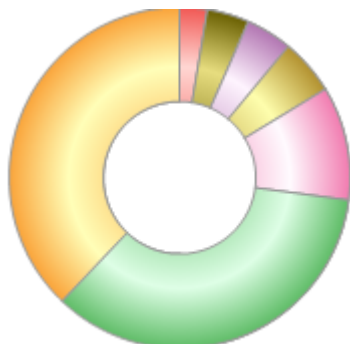
Rank	Regions	%
1	United Kingdom	52.60
2	United States	19.70
3	Other	17.80
4	Cash	4.50
5	Netherlands	3.10
6	Germany	2.30



Powered by data from FE fundinfo

Sector Breakdown (01 May 2024)

Rank	Sectors	%
1	BBB	37.90
2	A	35.00
3	NR	10.80
4	Nondebt	5.30
5	Cash	4.40
6	BB	4.00
7	AA	2.60



Powered by data from FE fundinfo

Top Holdings (01 May 2024)

Rank	Largest Holdings	%
1	CHURCH 3.25 140732	2.62
2	HSBC HOLDINGS 7 070438	2.50

IFSL Marlborough Bond Income P Inc

Rank	Largest Holdings	%
3	DEUTSCHE 2.625 161224	2.34
4	L&G PLC 5.125 141148	2.30
5	JPMORGAN 0.991 280426	2.28
6	COOP CEN RFFISEN 4.625	2.23
7	WELLS FARGO 4.625 021135	2.21
8	NATIONWIDE 5.75 PERP	2.21
9	BNP PARIBAS 2 240531	2.18
10	VOLKSWAGEN 4.125 171131	2.17