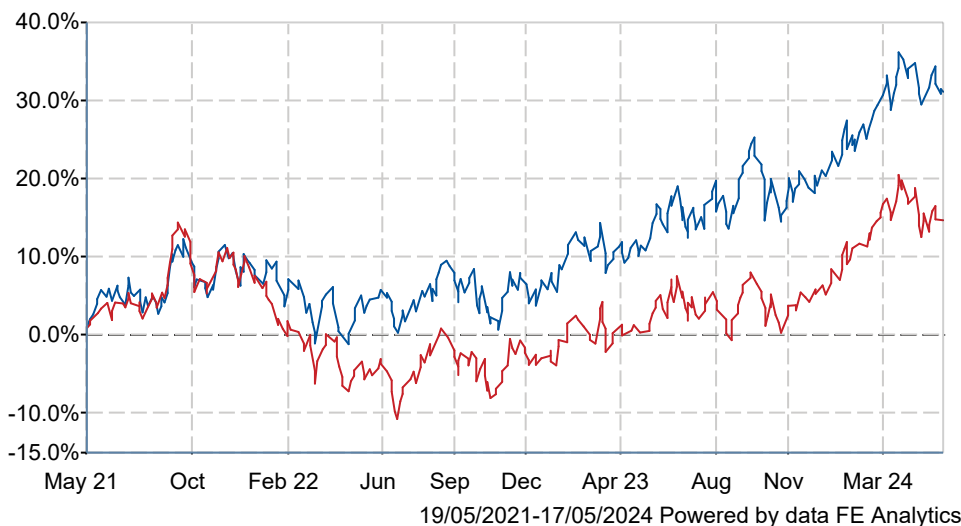




Fidelity Japan W Acc

What is the Fund's objective?

The Fund aims to increase the value of your investment over a period of 5 years or more. The Fund will invest at least 70% in equities (and their related securities) of Japanese companies (those domiciled, incorporated or having significant business in Japan and those which are listed in Japan) and is not restricted in terms of size or industry. The Fund is actively managed without reference to a benchmark. The Fund may also invest in other transferable securities, other collective investment schemes, money market instruments, cash and deposits and is also able to use derivatives for efficient portfolio management. The Fund's performance can be compared to the TOPIX (Tokyo Price Index) (Net Total Return) as the index constituents are representative of the type of companies the Fund invests in. Many funds sold in the UK are grouped into sectors by the Investment Association (the trade body that represents UK Investment Managers), to facilitate comparison between funds with broadly similar characteristics. This Fund is classified in the IA Japan sector. Performance data on funds within this sector may be prepared and published by data providers and will be used when evaluating the performance of this Fund. The IA sector most closely reflects the combination of assets in the Fund.

Cumulative Performance



	3m	6m	1yr	3yrs	5yrs
 Fidelity Japan W Acc	+2.7	+8.4	+13.5	+31.2	+77.9
 IA Japan	+0.8	+8.8	+10.6	+15.5	+37.9
Rank within sector	17 / 102	68 / 102	45 / 102	14 / 98	6 / 93
Quartile	1	3	2	1	1

Fund Information

Sector	IA Japan
Asset Class	Equity
Launch Date	12-Oct-1981
Fund Size	£480.8m / \$610.8m (31-Mar-2024)
Fund Manager	Min Zeng

How does FE fundinfo rate this fund?

FE fundinfo Crown Rating	
AFI	NO
Risk Score	114

Investment Details

Initial Charge	0.00%
Annual Charges	0.75%
Note to charges	n/a
Minimum Initial Investment	£ 1,000
Minimum Additional Investment	£ 250
Dividend Policy	Mar 01 (Final)

Prices

Unit Type	ACC
Mid	678.50(GBX)
Price Date	17 May 2024
Yield	0.00

Codes

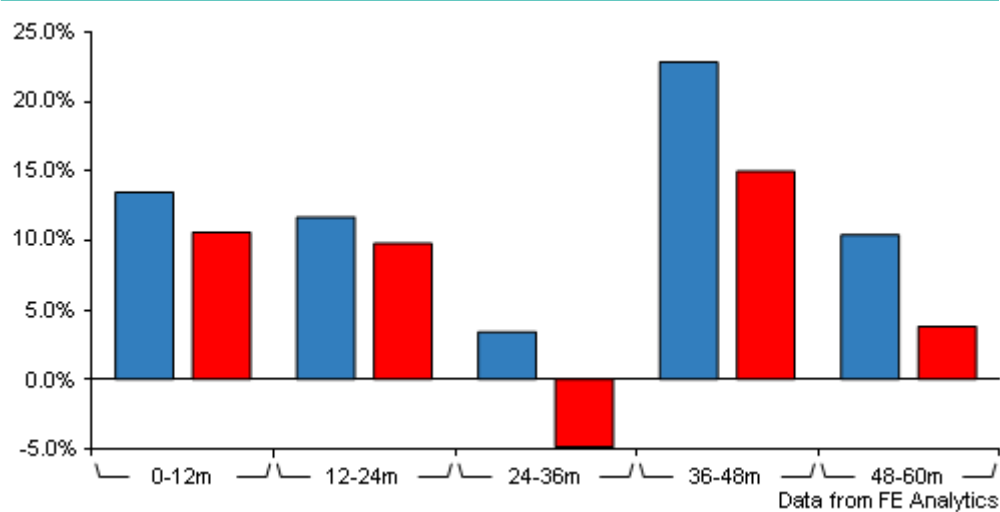
Citicode	GMUJ
SEDOL	B882N04
ISIN	GB00B882N041

Contact Details

Address	4 Cannon St, London, EC4M 5AB
Telephone numbers	0333 300 3350 (Main Number)
Website	www.fidelityinternational.com

Fidelity Japan W Acc

Discrete Performance



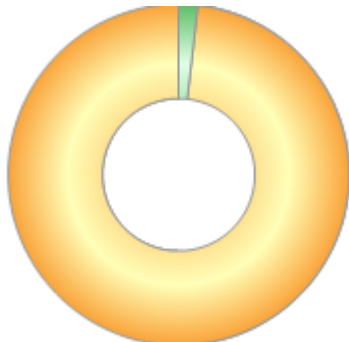
	0-12m	12m-24m	24m-36m	36m-48m	48m-60m
Fidelity Japan W Acc	+13.5	+11.7	+3.4	+22.9	+10.4
IA Japan	+10.6	+9.8	-4.9	+15.0	+3.8
Rank within sector	45 / 102	21 / 101	7 / 97	11 / 94	13 / 93
Quartile	2	1	1	1	1

All prices in Pence Sterling (GBX) unless otherwise specified. Price total return performance figures are calculated on a bid price to bid price basis (mid to mid for OEICs) with net income (dividends) reinvested. Performance figures are shown in Pound Sterling (GBP).

Fidelity Japan W Acc

Asset Allocation (31 Mar 2024)

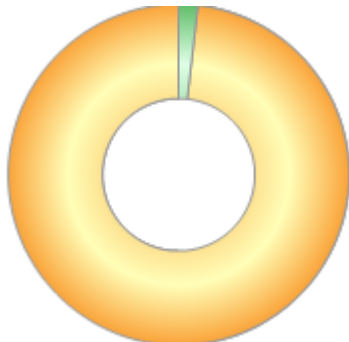
Rank	Asset Classes	%
1	Japanese Equities	98.20
2	Money Market	1.80
3	Alternative Investment Strategies	0.00



Powered by data from FE fundinfo

Regional Breakdown (31 Mar 2024)

Rank	Regions	%
1	JAPAN	98.20
2	Uninvested Cash	1.80
3	Derivatives	0.00



Powered by data from FE fundinfo

Sector Breakdown (31 Mar 2024)

Rank	Sectors	%
1	Others	23.44
2	Electronic & Electrical Equipment	19.40
3	Transport Equipment	9.92
4	Construction	8.71
5	Banks	8.16
6	Wholesale	6.09
7	Insurance	5.20
8	Chemicals	5.02
9	Machinery	4.72
10	Others	9.34



Powered by data from FE fundinfo

Top Holdings (31 Mar 2024)

Rank	Largest Holdings	%
1	MITSUBISHI UFJ FIN GRP INC	4.19
2	SUMITOMO MITSUI FINL GRP INC	3.97

Fidelity Japan W Acc

Rank	Largest Holdings	%
3	ITOCHU CORPORATION	3.62
4	TOKYO ELECTRON LTD	3.47
5	SUMITOMO FORESTRY CO LTD	3.24
6	HITACHI LTD	3.08
7	SHIN ETSU CHEM CO LTD	2.89
8	KANSAI ELECTRIC POWER CO INC	2.88
9	TOYOTA MOTOR CORP	2.81
10	HONDA MOTOR CO LTD	2.74