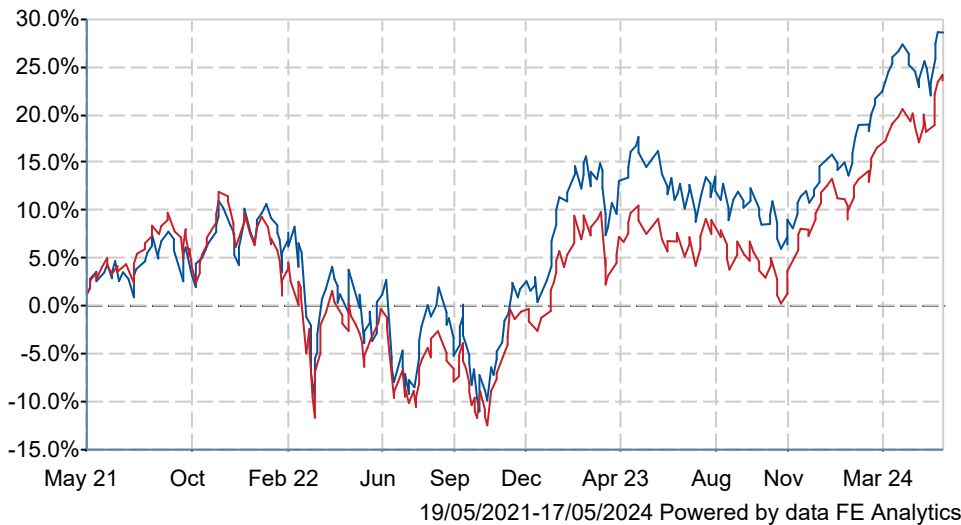


CT European ZNA GBP

What is the Fund's objective?

The Fund aims to increase the value of your investment over the long term. It looks to outperform the FTSE World Europe ex UK Index over rolling 3-year periods, after the deduction of charges. The Fund is actively managed, and invests at least 75% of its assets in shares of Continental European companies. The Fund selects companies considered to have good prospects for share price growth, from any industry or economic sector, and whilst there is no restriction on size, investment tends to focus on larger companies, such as those included in the FTSE World Europe ex UK Index. The FTSE World Europe ex UK Index is regarded as providing an appropriate representation of the share performance of large and medium-sized companies across Europe (excluding the UK), currently with approximately 500 companies included. It provides a suitable target benchmark against which Fund performance will be measured and evaluated over time. The Fund typically invests in fewer than 70 companies, which may include shares of some companies not within the Index. The Fund may invest in other assets such as cash and deposits, and hold other funds (including funds managed by Columbia Threadneedle companies) when deemed appropriate. The Fund is not permitted to invest in derivatives for investment purposes, but derivatives may be used with the aim of reducing risk or managing the Fund more efficiently. Derivatives are sophisticated investment instruments linked to the rise and fall of the price of other assets.

Cumulative Performance



	3m	6m	1yr	3yrs	5yrs
CT European ZNA GBP	+6.6	+15.4	+11.7	+27.5	+65.4
IA Europe Excluding UK	+7.1	+14.3	+14.5	+22.6	+55.3
Rank within sector	96 / 143	44 / 143	111 / 143	58 / 136	30 / 129
Quartile	3	2	4	2	1

Fund Information

Sector	IA Europe Excluding UK
Asset Class	Equity
Launch Date	30-Sep-1985
Fund Size	£856.0m / \$1,087.5m (30-Apr-2024)
Fund Manager	Paul Doyle Frederic Jeanmaire

How does FE fundinfo rate this fund?

Alpha Manager Rating	Frederic Jeanmaire
FE fundinfo Crown Rating	★★★★★
AFI	NO
Risk Score	111

Investment Details

Initial Charge	3.00%
Annual Charges	0.75%
Note to charges	n/a
Minimum Initial Investment	£ 2,000
Minimum Additional Investment	£ 500
Dividend Policy	Mar 10 (Final)

Prices

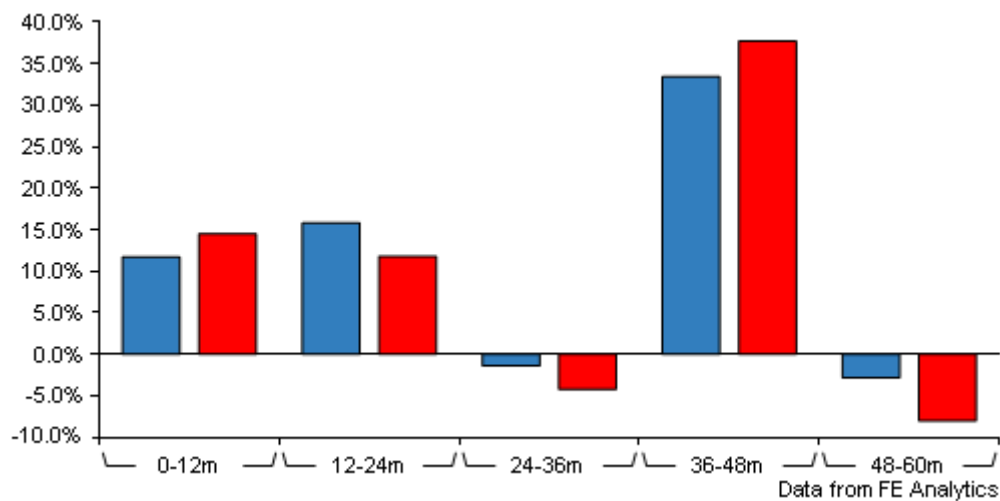
Unit Type	ACC
Mid	325.29(GBX)
Price Date	17 May 2024
Yield	2.07

Codes

Citicode	G7DA
SEDOL	B8C2LS4
ISIN	GB00B8C2LS47

CT European ZNA GBP

Discrete Performance



	0-12m	12m-24m	24m-36m	36m-48m	48m-60m
CT European ZNA GBP	+11.7	+15.8	-1.4	+33.4	-2.8
IA Europe Excluding UK	+14.5	+11.8	-4.2	+37.7	-8.0
Rank within sector	111 / 143	34 / 142	30 / 136	97 / 131	24 / 129
Quartile	4	1	1	3	1

All prices in Pence Sterling (GBX) unless otherwise specified. Price total return performance figures are calculated on a bid price to bid price basis (mid to mid for OEICs) with net income (dividends) reinvested. Performance figures are shown in Pound Sterling (GBP).

Contact Details

Address Cannon Place, 78 Cannon Street, London
United Kingdom EC4N 6AG

Telephone numbers 0845 113 0274 (Fax Number)
0800 953 0134 (Main Number)

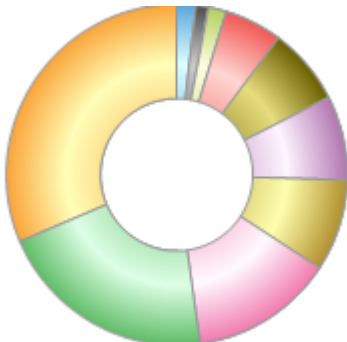
Website www.columbiathreadneedle.com

Email questions@service.columbiathreadneedle.com

CT European ZNA GBP

Asset Allocation (31 Mar 2024)

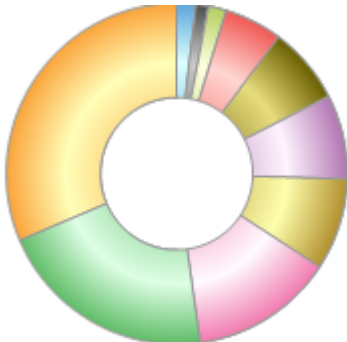
Rank	Asset Classes	%
1	French Equities	31.44
2	German Equities	20.81
3	Swiss Equities	13.58
4	Dutch Equities	8.68
5	Italian Equities	8.04
6	Danish Equities	7.26
7	Irish Equities	5.46
8	Norwegian Equities	1.67
9	Swedish Equities	1.24
10	Others	1.82



Powered by data from FE fundinfo

Regional Breakdown (31 Mar 2024)

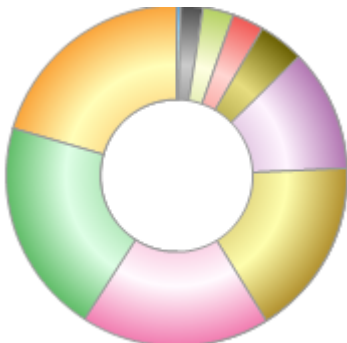
Rank	Regions	%
1	France	31.44
2	Germany	20.81
3	Switzerland	13.58
4	Netherlands	8.68
5	Italy	8.04
6	Denmark	7.26
7	Ireland	5.46
8	Norway	1.67
9	Sweden	1.24
10	Others	1.82



Powered by data from FE fundinfo

Sector Breakdown (31 Mar 2024)

Rank	Sectors	%
1	Financials	20.53
2	Consumer Discretionary	20.40
3	Health Care	17.89
4	Industrials	16.88
5	Technology	11.63
6	Consumer Staples	4.27
7	Energy	3.03
8	Telecommunications	2.90
9	Basic Materials	2.05
10	Others	0.42



Powered by data from FE fundinfo

Top Holdings (31 Mar 2024)

Rank	Largest Holdings	%
1	Novo Nordisk A/S Class B	6.97
2	ASML Holding NV	6.84

CT European ZNA GBP

Rank	Largest Holdings	%
3	LVMH Moet Hennessy Louis Vuitton SE	4.86
4	SAP SE	4.19
5	Safran SA	3.69
6	Allianz SE	3.52
7	Airbus SE	3.44
8	Munich Reinsurance Company	3.27
9	Sanofi	3.24
10	Nestle S.A.	3.21