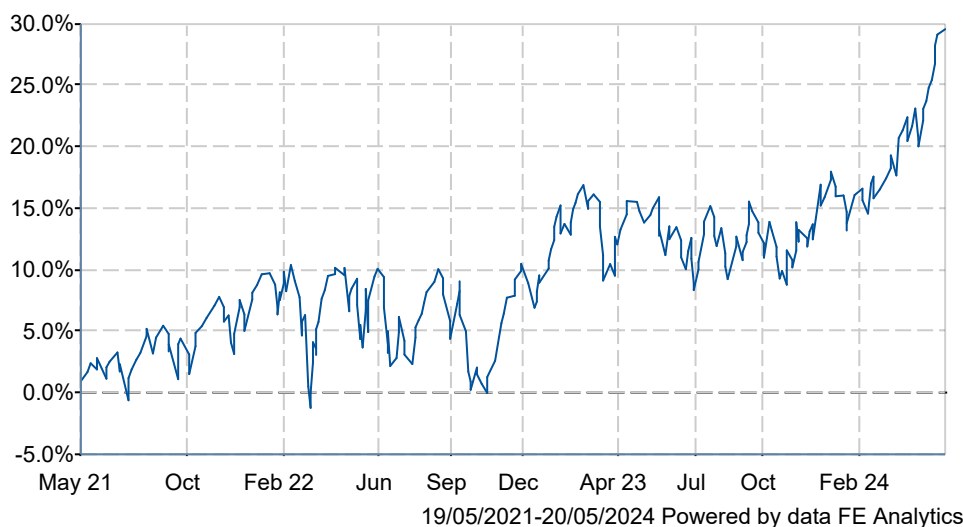


# iShares UK Equity Index (UK) D Acc

## What is the Fund's objective?

The Fund aims to provide a return on your investment (generated through an increase in the value of the assets held by the Fund) by tracking closely the performance of the FTSE All Share Index, the Fund's benchmark index. The Fund invests in equity securities (e.g. shares) of companies that make up the benchmark index. The benchmark index is designed to measure the performance of equity securities of small, mid and large capitalisation companies listed in the United Kingdom. The benchmark index is a free float-adjusted market capitalisation weighted index. Free float-adjusted means that only shares readily available in the market rather than all of a company's issued shares are used in calculating the benchmark index. Free float-adjusted market capitalisation is the share price of a company multiplied by the number of shares readily available in the market. The Fund is passively managed and the investment manager has limited discretion to select the Fund's investments and in doing so will take into consideration the benchmark index. The Fund intends to replicate the benchmark index by holding the equity securities, which make up the benchmark index, in similar proportions to the benchmark index. The Fund may also engage in short term secured lending of its investments to certain eligible third parties. This is used as a means of generating additional income and to off-set the costs of the Fund. Recommendation: This Fund may not be appropriate for short-term investment.

## Cumulative Performance




|                                    | 3m    | 6m    | 1yr   | 3yrs  | 5yrs  |
|------------------------------------|-------|-------|-------|-------|-------|
| iShares UK Equity Index (UK) D Acc | +10.1 | +13.8 | +12.7 | +28.3 | +36.1 |

## Fund Information

|             |  |
|-------------|--|
| Benchmark   | n/a                                    |
| Asset Class | Equity                                 |
| Launch Date | 18-Aug-2005                            |
| Fund Size   | £11,617.2m / \$14,758.5m (30-Apr-2024) |

## How does FE fundinfo rate this fund?

FE fundinfo Passive Rating  P

Risk Score 

## Other ratings

Morningstar Analyst Rating 

## Investment Details

|                               |                        |
|-------------------------------|------------------------|
| Initial Charge                | 0.00%                  |
| Annual Charges                | 0.04%                  |
| Note to charges               | Initial Charges: max.; |
| Minimum Initial Investment    | £ 100,000              |
| Minimum Additional Investment | £ 100                  |
| Dividend Policy               | Feb 28 (Final), Aug 31 |

## Prices

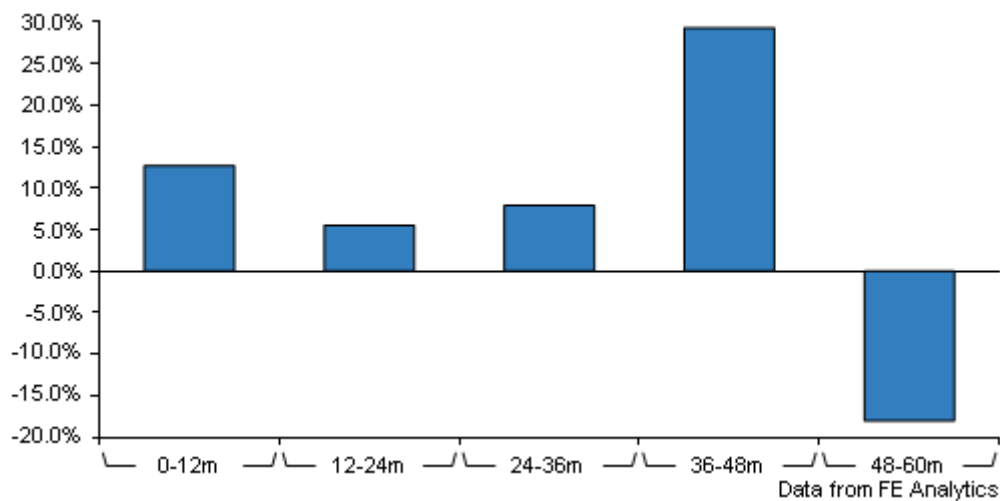
|            |             |
|------------|-------------|
| Unit Type  | ACC         |
| Mid        | 309.85[GBX] |
| Price Date | 20 May 2024 |
| Yield      | 2.65        |

## Codes

|          |              |
|----------|--------------|
| Citicode | G6IG         |
| SEDOL    | B7C44X9      |
| ISIN     | GB00B7C44X99 |

# iShares UK Equity Index (UK) D Acc

## Discrete Performance



|                                    | 0-12m | 12m-24m | 24m-36m | 36m-48m | 48m-60m |
|------------------------------------|-------|---------|---------|---------|---------|
| iShares UK Equity Index (UK) D Acc | +12.7 | +5.5    | +7.9    | +29.3   | -18.0   |

All prices in Pence Sterling (GBX) unless otherwise specified. Price total return performance figures are calculated on a bid price to bid price basis (mid to mid for OEICs) with net income (dividends) reinvested. Performance figures are shown in Pound Sterling (GBP).

## Contact Details

Address 12 Throgmorton Avenue,  
London, EC2N 2DL

Telephone numbers 020 7743 1000 (Fax  
Number)  
0800 445 522 (Main  
Number)

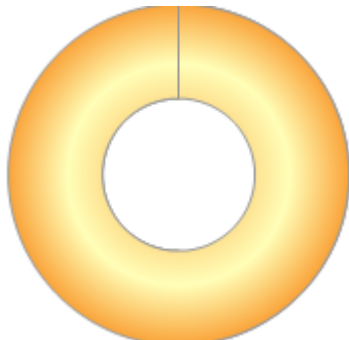
Website [www.blackrock.co.uk](http://www.blackrock.co.uk)

Email [uk.investor@blackrock.com](mailto:uk.investor@blackrock.com)

# iShares UK Equity Index (UK) D Acc

## Asset Allocation (30 Apr 2024)

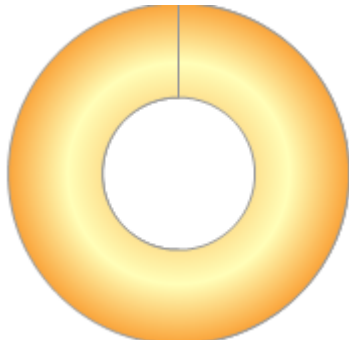
| Rank | Asset Classes | %      |
|------|---------------|--------|
| 1    | UK Equities   | 100.00 |
|      |               |        |
|      |               |        |
|      |               |        |
|      |               |        |
|      |               |        |
|      |               |        |
|      |               |        |
|      |               |        |
|      |               |        |



Powered by data from FE fundinfo

## Regional Breakdown (30 Apr 2024)

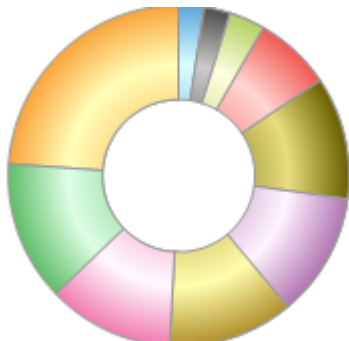
| Rank | Regions | %      |
|------|---------|--------|
| 1    | UK      | 100.00 |
|      |         |        |
|      |         |        |
|      |         |        |
|      |         |        |
|      |         |        |
|      |         |        |
|      |         |        |
|      |         |        |
|      |         |        |



Powered by data from FE fundinfo

## Sector Breakdown (30 Apr 2024)

| Rank | Sectors                | %     |
|------|------------------------|-------|
| 1    | Financials             | 23.93 |
| 2    | Consumer Staples       | 13.26 |
| 3    | Health Care            | 11.95 |
| 4    | Industrials            | 11.94 |
| 5    | Consumer Discretionary | 11.77 |
| 6    | Energy                 | 11.59 |
| 7    | Basic Materials        | 7.33  |
| 8    | Utilities              | 3.40  |
| 9    | Real Estate            | 2.47  |
| 10   | Others                 | 2.36  |



Powered by data from FE fundinfo

## Top Holdings (30 Apr 2024)

| Rank | Largest Holdings | %    |
|------|------------------|------|
| 1    | SHELL PLC        | 7.71 |
| 2    | ASTRAZENECA PLC  | 7.39 |

# iShares UK Equity Index (UK) D Acc

| Rank | Largest Holdings  | %    |
|------|-------------------|------|
| 3    | HSBC HOLDINGS PLC | 5.51 |
| 4    | UNILEVER PLC      | 4.26 |
| 5    | BP PLC            | 3.60 |
| 6    | GLAXOSMITHKLINE   | 2.79 |
| 7    | RELX PLC          | 2.60 |
| 8    | DIAGEO PLC        | 2.54 |
| 9    | RIO TINTO PLC     | 2.47 |
| 10   | GLENCORE PLC      | 2.35 |