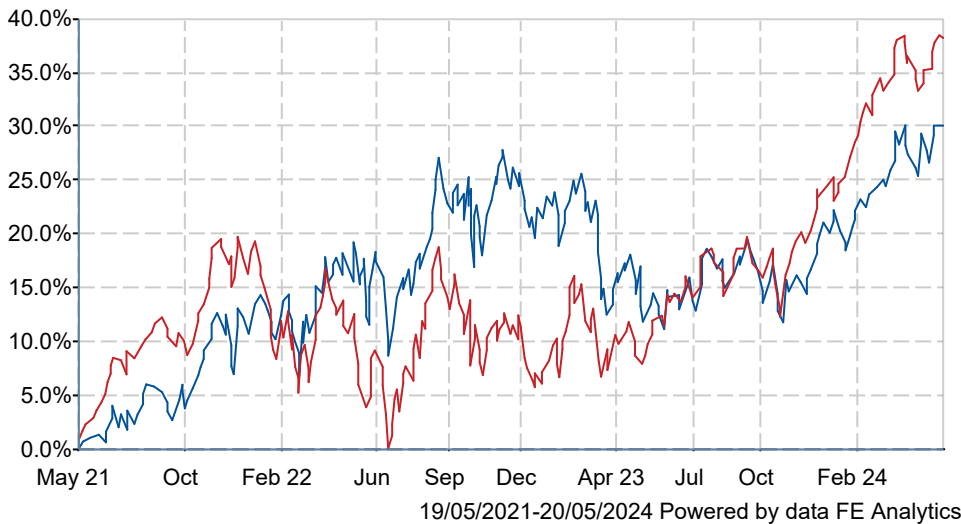


JPM US Equity Income C Acc

What is the Fund's objective?

To provide a portfolio designed to achieve income by investing at least 80% of the Fund's assets in US equities in any economic sector whilst participating in capital growth over the longterm (5-10 years).

Cumulative Performance



	3m	6m	1yr	3yrs	5yrs
JPM US Equity Income C Acc	+5.3	+12.5	+15.5	+28.2	+57.2
IA North America	+5.5	+15.5	+23.1	+37.2	+83.7
Rank within sector	94 / 254	216 / 253	227 / 252	175 / 227	171 / 204
Quartile	2	4	4	4	4

Fund Information

Sector	IA North America
Asset Class	Equity
Launch Date	15-Dec-2008
Fund Size	£3,523.2m / \$4,475.9m (20-May-2024)
Fund Manager	Clare Hart Andrew Brandon David Silberman

How does FE fundinfo rate this fund?

FE fundinfo Crown Rating	
AFI	  
Risk Score	107

Other ratings

Morningstar Analyst Rating	
----------------------------	--

Investment Details

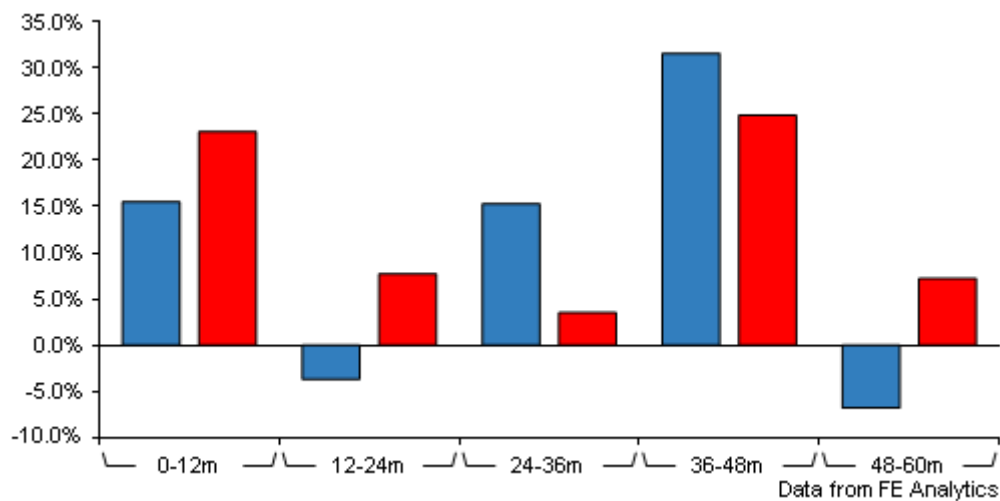
Initial Charge	0.00%
Annual Charges	0.75%
Note to charges	Initial Charges: max.;
Minimum Initial Investment	£ 5,000,000
Minimum Additional Investment	£ 100,000
Dividend Policy	Feb 01 (Final), May 01, Aug 01, Nov 01

Prices

Unit Type	ACC
Mid	453.40(GBX)
Price Date	20 May 2024
Yield	2.24

JPM US Equity Income C Acc

Discrete Performance



	0-12m	12m-24m	24m-36m	36m-48m	48m-60m
JPM US Equity Income C Acc	+15.5	-3.7	+15.3	+31.6	-6.8
IA North America	+23.1	+7.7	+3.5	+24.9	+7.2
Rank within sector	227 / 252	214 / 244	30 / 227	61 / 218	170 / 204
Quartile	4	4	1	2	4

All prices in Pence Sterling (GBX) unless otherwise specified. Price total return performance figures are calculated on a bid price to bid price basis (mid to mid for OEICs) with net income (dividends) reinvested. Performance figures are shown in Pound Sterling (GBP).

Codes

Citicode	EBQ8
SEDOL	B3FJQ48
ISIN	GB00B3FJQ482

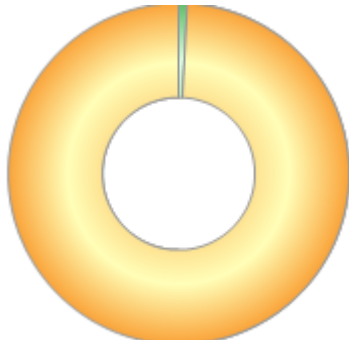
Contact Details

Address	60 Victoria Embankment, London EC4Y 0JP
Telephone numbers	0800 727 770 (Main Number)
Website	www.jpmmorganassetmanagement.com
Email	ifaenquiry@jpmmorgan.com

JPM US Equity Income C Acc

Asset Allocation (31 Mar 2024)

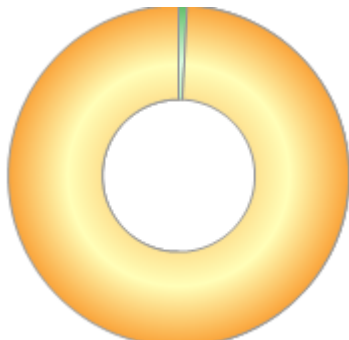
Rank	Asset Classes	%
1	USA Equities	99.20
2	Cash	0.80



Powered by data from FE fundinfo

Regional Breakdown (31 Mar 2024)

Rank	Regions	%
1	USA	99.20
2	Cash	0.80



Powered by data from FE fundinfo

Sector Breakdown (31 Mar 2024)

Rank	Sectors	%
1	Financials	24.10
2	Health Care	15.70
3	Industrials	13.00
4	Information Technology	9.60
5	Consumer Staples	9.50
6	Energy	8.70
7	Consumer Discretionary	6.10
8	Utilities	4.30
9	Materials	3.60
10	Others	5.40



Powered by data from FE fundinfo

Top Holdings (31 Mar 2024)

Rank	Largest Holdings	%
1	ConocoPhillips	3.00
2	Wells Fargo	2.90

JPM US Equity Income C Acc

Rank	Largest Holdings	%
3	Bank of America	2.30
4	Morgan Stanley	2.20
5	Chevron	2.20
6	Blackrock	2.10
7	Comcast	2.00
8	Charles Schwab	2.00
9	Abbvie	2.00
10	Exxon Mobil	1.90