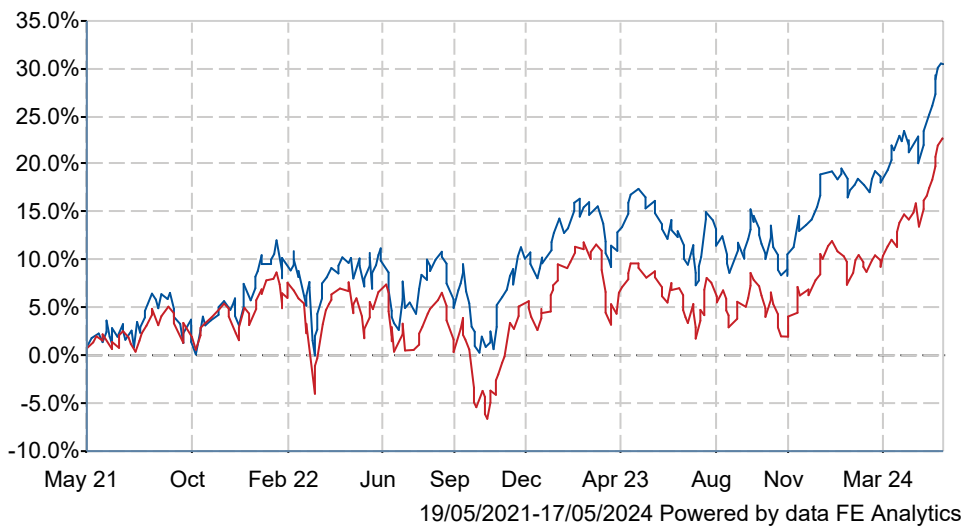




Premier Miton Monthly Income C Inc GBP

What is the Fund's objective?

The objective of the fund is to provide an income together with capital growth over the long term, being five years or more. Five years is also the minimum recommended term for holding shares in this fund. This does not mean that the fund will achieve the objective over this, or any other, specific time period and there is a risk of loss to the original capital invested. The income will be paid monthly, by dividend distributions.

Cumulative Performance



	3m	6m	1yr	3yrs	5yrs
 Premier Miton Monthly Income C Inc GBP	+10.1	+15.5	+13.6	+28.2	+23.5
 IA UK Equity Income	+11.5	+15.0	+13.3	+22.0	+32.4
Rank within sector	57 / 77	34 / 77	40 / 77	18 / 75	57 / 74
Quartile	3	2	3	1	4

Fund Information

Sector	IA UK Equity Income
Asset Class	Equity
Launch Date	24-Feb-1989
Fund Size	£451.5m / \$573.5m (17-May-2024)
Fund Manager	Emma Mogford

How does FE fundinfo rate this fund?

FE fundinfo Crown Rating	
AFI	NO
Risk Score	99

Investment Details

Initial Charge	n/a
Annual Charges	0.75%
Note to charges	n/a
Minimum Initial Investment	£ 250,000
Minimum Additional Investment	£ 25,000
Dividend Policy	Jan 01, Feb 01, Mar 01, Apr 01, May 01 (Final), Jun 01, Jul 01, Aug 01, Sep 01, Oct 01, Nov 01, Dec 01

Prices

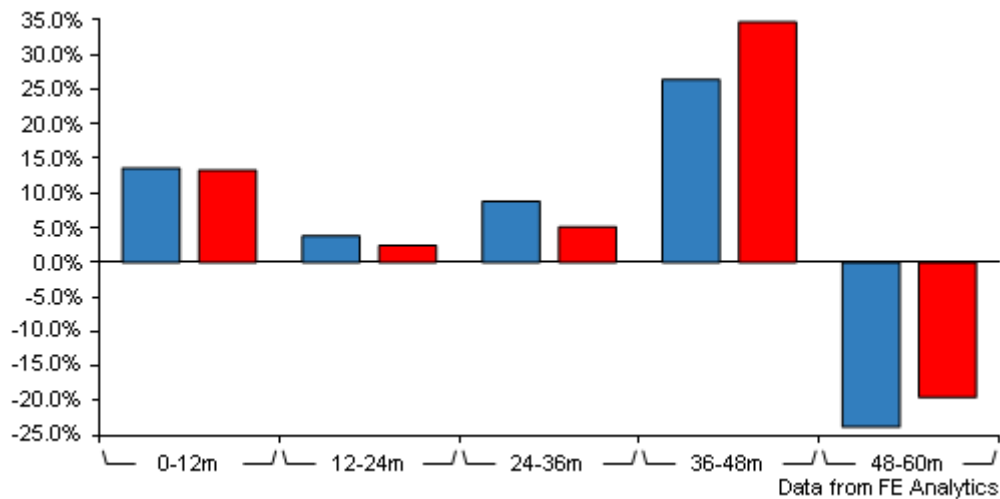
Unit Type	INC
Mid	204.00(GBX)
Price Date	17 May 2024
Yield	3.97

Codes

Citicode	BY64
SEDOL	0388687
ISIN	GB0003886875

Premier Miton Monthly Income C Inc GBP

Discrete Performance



	0-12m	12m-24m	24m-36m	36m-48m	48m-60m
<div>Premier Miton Monthly Income C Inc GBP</div>	+13.6	+3.8	+8.8	+26.4	-23.8
<div>IA UK Equity Income</div>	+13.3	+2.4	+5.1	+34.7	-19.5
Rank within sector	40 / 77	28 / 77	20 / 75	65 / 74	55 / 74
Quartile	3	2	2	4	3

All prices in Pence Sterling (GBX) unless otherwise specified. Price total return performance figures are calculated on a bid price to bid price basis (mid to mid for OEICs) with net income (dividends) reinvested. Performance figures are shown in Pound Sterling (GBP).

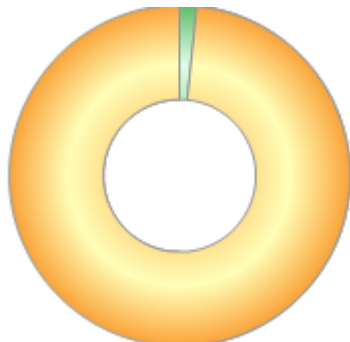
Contact Details

Address	Premier Fund Managers Ltd, Eastgate Court, High Street, Guildford, Surrey, GU1 3DE
Telephone numbers	01483 306090 (Main Number)
Website	www.premiermiton.com
Email	info@premiermiton.com

Premier Miton Monthly Income C Inc GBP

Asset Allocation (28 Mar 2024)

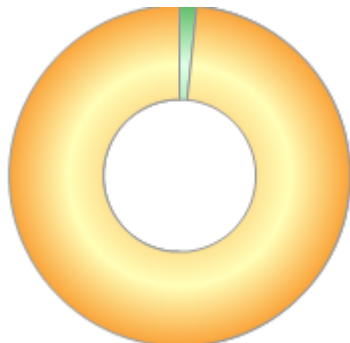
Rank	Asset Classes	%
1	UK Equities	98.40
2	Cash & equivalent	1.60



Powered by data from FE fundinfo

Regional Breakdown (28 Mar 2024)

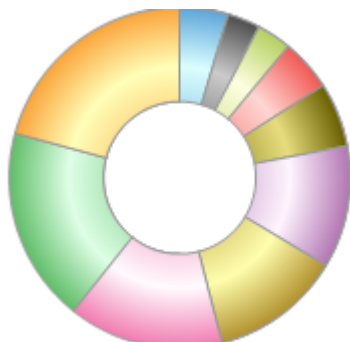
Rank	Regions	%
1	UK	98.40
2	Cash & equivalent	1.60



Powered by data from FE fundinfo

Sector Breakdown (28 Mar 2024)

Rank	Sectors	%
1	Industrials	20.80
2	Financials	18.50
3	Consumer Staples	14.70
4	Consumer Discretionary	12.40
5	Health Care	11.60
6	Energy	6.10
7	Utilities	4.90
8	Real Estate	3.30
9	Materials	3.10
10	Others	4.60



Powered by data from FE fundinfo

Top Holdings (30 Apr 2024)

Rank	Largest Holdings	%
1	Unilever	5.06
2	British American Tobacco	4.03

Premier Miton Monthly Income C Inc GBP

Rank	Largest Holdings	%
3	GSK	3.92
4	BAE Systems	3.78
5	Smiths Group	3.76
6	BP	3.14
7	Shell	3.10
8	Smurfit Kappa Group	3.07
9	Coca-Cola Europacific Partners	3.05
10	Sanofi	3.04