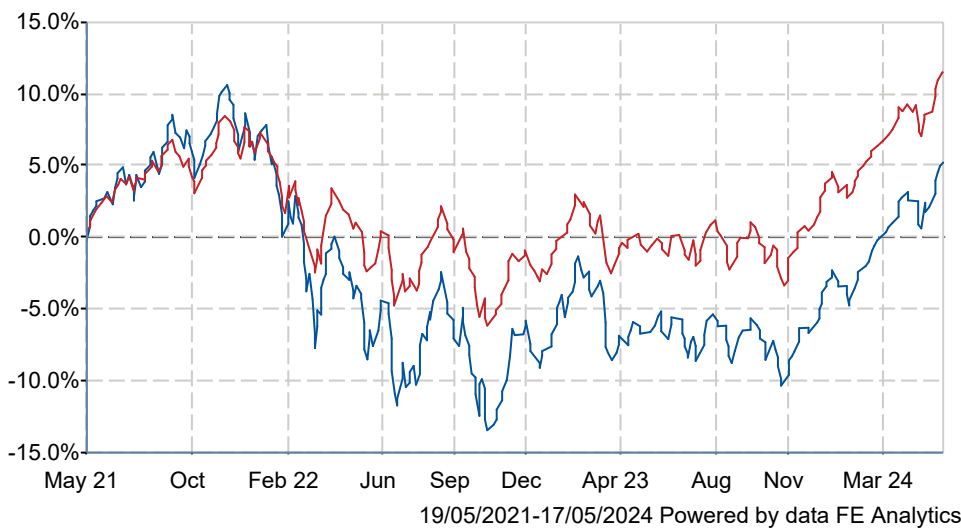


Quilter Investors Cirilium Dynamic Portfolio R Acc GBP

What is the Fund's objective?

To achieve capital growth over a period of five years or more through investment markets both in the UK and overseas. The portfolio is broadly diversified across asset classes, with exposure to equities between 50-90% and with volatility of between 12 and 16%. The volatility range is a target, based on long term actuarial assumptions and the fund is managed to stay within this range most of the time. The volatility range is regularly reviewed and may change from time to time due to changes in these assumptions.

Cumulative Performance



	3m	6m	1yr	3yrs	5yrs
Quilter Investors Cirilium Dynamic Portfolio R Acc GBP	+6.2	+12.5	+11.9	+5.5	+25.3
IA Flexible Investment	+5.2	+10.7	+11.9	+11.2	+31.9
Rank within sector	50 / 162	54 / 161	95 / 159	111 / 139	90 / 123
Quartile	2	2	3	4	3

Fund Information

Sector	IA Flexible Investment
Asset Class	Mixed Asset
Launch Date	02-Jun-2008
Fund Size	£1,024.0m / \$1,300.9m (17-May-2024)
Fund Manager	Ian Jensen-Humphreys Sacha Chorley CJ Cowan

How does FE fundinfo rate this fund?

FE fundinfo Crown Rating	
AFI	NO
Risk Score	82

Investment Details

Initial Charge	0.00%
Annual Charges	0.00%
Note to charges	Initial Charges: max.;
Minimum Initial Investment	£ 15,000,000
Minimum Additional Investment	£ 1,000,000
Dividend Policy	Nov 01 (Final)

Prices

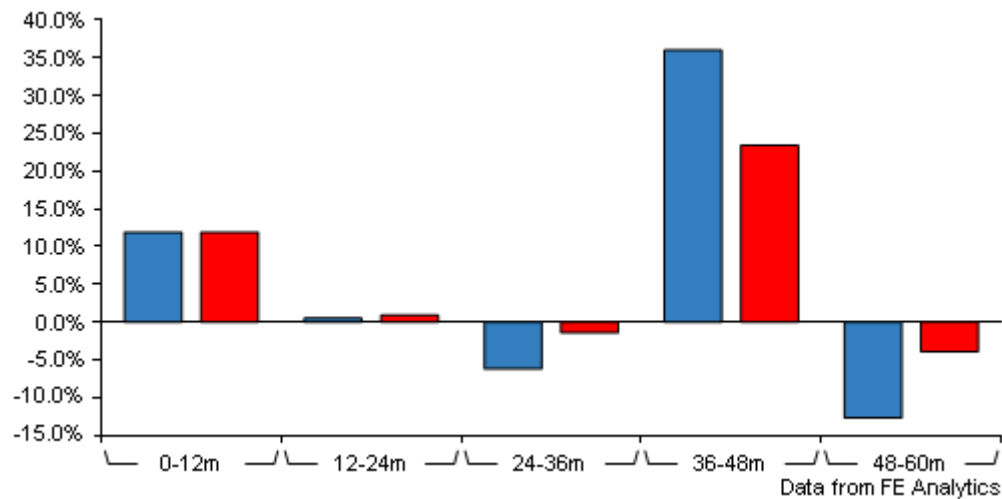
Unit Type	ACC
Mid	298.99(GBX)
Price Date	17 May 2024
Yield	1.06

Codes

Citicode	BKZ5
SEDOL	B2Q8TX7
ISIN	GB00B2Q8TX72

Quilter Investors Cirilium Dynamic Portfolio R Acc GBP

Discrete Performance

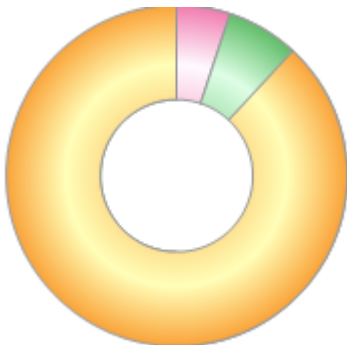


	0-12m	12m-24m	24m-36m	36m-48m	48m-60m
Quilter Investors Cirilium					
Dynamic Portfolio R Acc GBP	+11.9	+0.5	-6.2	+36.0	-12.7
IA Flexible Investment	+11.9	+0.9	-1.4	+23.4	-3.9
Rank within sector	95 / 159	86 / 150	122 / 139	18 / 129	113 / 123
Quartile	3	3	4	1	4

All prices in Pence Sterling (GBX) unless otherwise specified. Price total return performance figures are calculated on a bid price to bid price basis (mid to mid for OEICs) with net income (dividends) reinvested. Performance figures are shown in Pound Sterling (GBP).

Asset Allocation (30 Apr 2024)

Rank	Asset Classes	%
1	Global Equity	88.80
2	Alternatives	6.90
3	Fixed income	5.10
4	Cash	-0.80



Powered by data from FE fundinfo

Top Holdings (30 Apr 2024)

Rank	Largest Holdings	%
1	Fidelity Asia Pacific Opportunities Fund W Acc GBP	5.42
2	M&G European Strategic Value Fund CI EUR Acc	4.81
3	J O Hambro UK Dynamic Fund B GBP Acc	4.58
4	Quilter Investors Equity 2 Fund - [Adviser: Investec] A GBP Acc	4.14
5	Liontrust UK Growth Fund M GBP Acc	4.12

Contact Details

Address Senator House, 85 Queen Victoria Street, London, EC4V 4AB

Telephone numbers +44-2071673600 (Main Number)

Website www.quilterinvestors.com

Email clientservices@quilterinvestors.com

Quilter Investors Cirilium Dynamic Portfolio R Acc GBP

Rank	Largest Holdings	%
6	M&G Japan Fund (I GBP Acc)	3.63
7	BRANDES US VALUE FD-I-GBP	3.54
8	Quilter Investors Global Equity Value Fund - (Adviser: RWC) U2 GBP Acc	3.50
9	Premier Miton European Opportunities Fund	3.31
10	Premier Miton US Opportunities Fund B Institutional Acc GBP	3.08