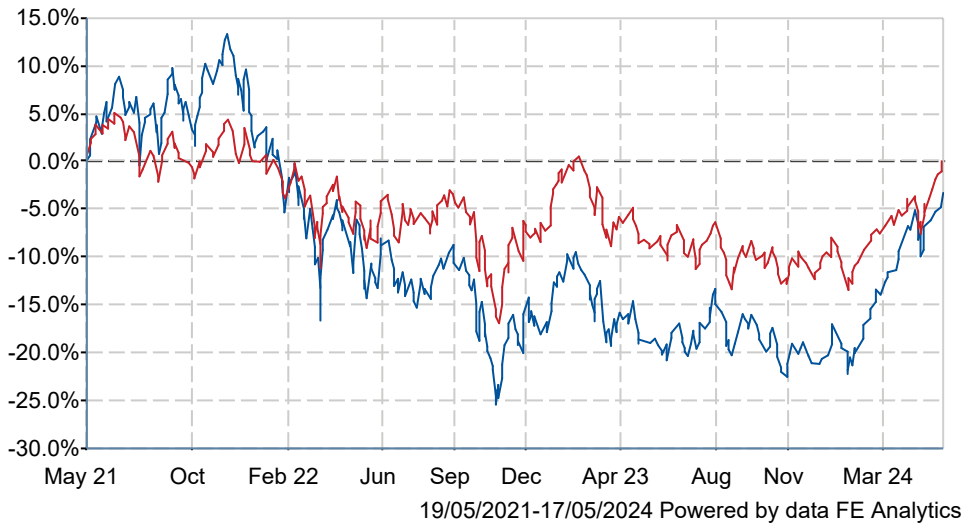




Baillie Gifford Pacific B Acc

What is the Fund's objective?

The fund aims to outperform (after deduction of costs) the MSCI AC Asia ex Japan Index, as stated in sterling, by at least 2% per annum over rolling five-year periods.

Cumulative Performance



	3m	6m	1yr	3yrs	5yrs
 Baillie Gifford Pacific B Acc	+14.4	+20.1	+19.4	-1.8	+84.7
 IA Asia Pacific Excluding Japan	+8.3	+11.1	+9.7	+0.6	+31.1
Rank within sector	3 / 119	1 / 119	3 / 118	62 / 112	2 / 105
Quartile	1	1	1	3	1

Fund Information

Sector	IA Asia Pacific Excluding Japan
Asset Class	Equity
Launch Date	17-Mar-1989
Fund Size	£3,361.2m / \$4,270.0m (17-May-2024)
Fund Manager	Roderick Snell Ben Durrant

How does FE fundinfo rate this fund?

FE fundinfo Crown Rating	
AFI	  
Risk Score	134

Investment Details

Initial Charge	0.00%
Annual Charges	0.65%
Note to charges	n/a
Minimum Initial Investment	£ 100,000
Minimum Additional Investment	n/a
Dividend Policy	Apr 30 (Final)

Prices

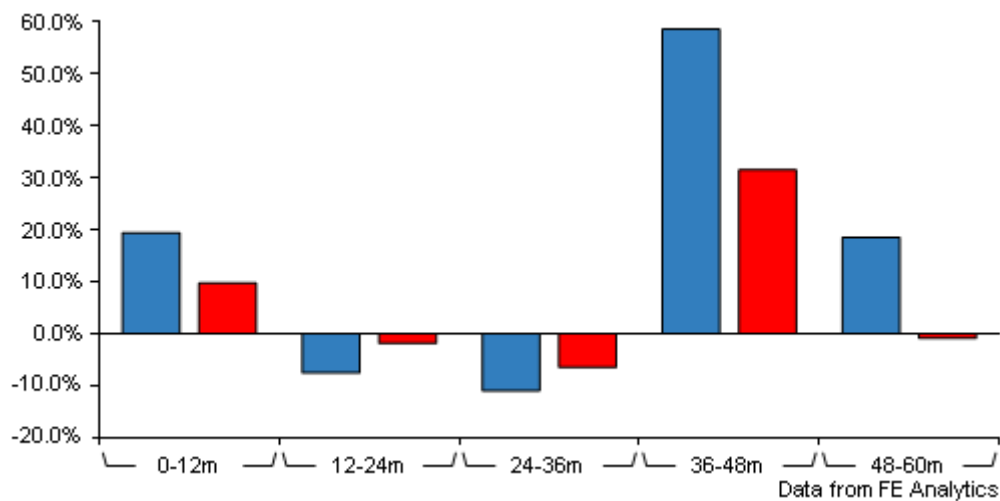
Unit Type	ACC
Mid	1282.00(GBX)
Price Date	17 May 2024
Yield	1.56

Codes

Citicode	BE80
SEDOL	0606323
ISIN	GB0006063233

Baillie Gifford Pacific B Acc

Discrete Performance



	0-12m	12m-24m	24m-36m	36m-48m	48m-60m
<div></div> Baillie Gifford Pacific B Acc	+19.4	-7.6	-11.0	+58.6	+18.5
<div></div> IA Asia Pacific Excluding Japan	+9.7	-1.9	-6.5	+31.5	-0.9
Rank within sector	3 / 118	108 / 117	73 / 112	1 / 107	1 / 105
Quartile	1	4	3	1	1

All prices in Pence Sterling (GBX) unless otherwise specified. Price total return performance figures are calculated on a bid price to bid price basis (mid to mid for OEICs) with net income (dividends) reinvested. Performance figures are shown in Pound Sterling (GBP).

Contact Details

Address Calton Square, 1 Greenside Row, Edinburgh, EH1 3AN

Telephone numbers +44 (0) 131 275 2000 (Main Number)

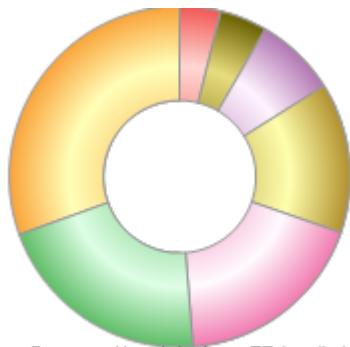
Website www.bailliegifford.com

Email enquiries@bailliegifford.com

Baillie Gifford Pacific B Acc

Asset Allocation (31 Mar 2024)

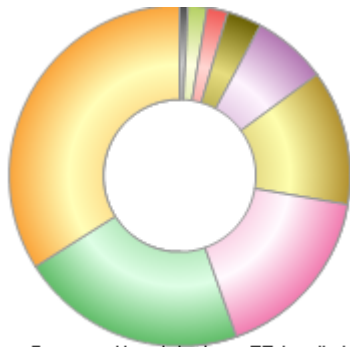
Rank	Asset Classes	%
1	China Equities	30.60
2	India Equities	20.80
3	South Korea Equities	18.50
4	Taiwan Equities	14.30
5	Vietnam Equities	7.70
6	Others Equities	4.50
7	Indonesia Equities	3.90
8	Cash	-0.30



Powered by data from FE fundinfo

Regional Breakdown (30 Apr 2024)

Rank	Regions	%
1	China	34.21
2	India	21.62
3	Korea	16.96
4	Taiwan	12.87
5	Vietnam	7.14
6	Indonesia	3.30
7	Kazakhstan	2.03
8	Singapore	1.84
9	Hong Kong	0.81
10	Cash & Cash Equivalents	-0.79



Powered by data from FE fundinfo

Top Holdings (30 Apr 2024)

Rank	Largest Holdings	%
1	TSMC	8.52
2	CNOOC	5.37
3	Tencent	5.21
4	Samsung Electronics	5.10
5	Reliance Industries	4.11
6	Samsung Electronics	3.58
7	Zijin Mining	2.65
8	SK Hynix	2.60
9	Jio Financial Services Limited	2.55
10	MMG Limited	2.40