



Baillie Gifford Global Discovery B Acc

What is the Fund's objective?

The fund aims to outperform (after deduction of costs) the S&P Global Small Cap Index, as stated in sterling, by at least 2% per annum over rolling five-year periods.

Cumulative Performance



	3m	6m	1yr	3yrs	5yrs
 Baillie Gifford Global Discovery B Acc	-5.8	-0.4	-11.3	-52.5	-26.1
 IA Global	+4.6	+14.0	+17.6	+22.3	+59.0
Rank within sector	559 / 563	550 / 556	536 / 546	478 / 478	402 / 402
Quartile	4	4	4	4	4

Fund Information

Sector	IA Global
Asset Class	Equity
Launch Date	03-May-2011
Fund Size	£527.0m / \$669.6m (17-May-2024)
Fund Manager	Douglas Brodie Luke Ward Svetlana Viteva

How does FE fundinfo rate this fund?

FE fundinfo Crown Rating	
AFI	 
Risk Score	207

Other ratings

Morningstar Analyst Rating	
----------------------------	--

Investment Details

Initial Charge	0.00%
Annual Charges	0.75%
Note to charges	n/a
Minimum Initial Investment	£ 100,000
Minimum Additional Investment	n/a
Dividend Policy	Apr 30 (Final)

Prices

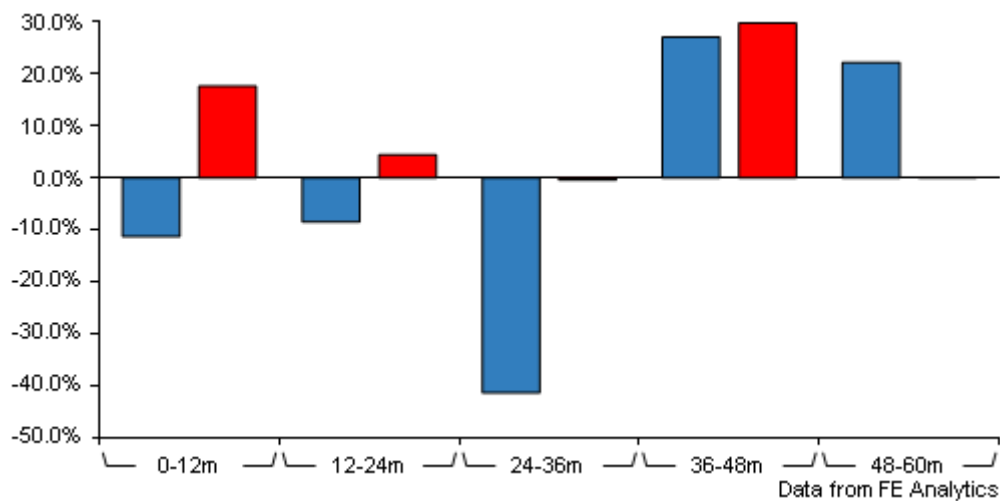
Unit Type	ACC
Mid	1178.00(GBX)
Price Date	17 May 2024
Yield	0.00

Codes

Citicode	BQ95
SEDOL	0605933
ISIN	GB0006059330

Baillie Gifford Global Discovery B Acc

Discrete Performance



	0-12m	12m-24m	24m-36m	36m-48m	48m-60m
<div></div> Baillie Gifford Global Discovery B Acc	-11.3	-8.5	-41.4	+27.1	+22.2
<div></div> IA Global	+17.6	+4.4	-0.4	+29.8	+0.1
Rank within sector	536 / 546	512 / 522	477 / 478	275 / 441	11 / 402
Quartile	4	4	4	3	1

All prices in Pence Sterling (GBX) unless otherwise specified. Price total return performance figures are calculated on a bid price to bid price basis (mid to mid for OEICs) with net income (dividends) reinvested. Performance figures are shown in Pound Sterling (GBP).

Contact Details

Address Calton Square, 1 Greenside Row, Edinburgh, EH1 3AN

Telephone numbers +44 (0) 131 275 2000 (Main Number)

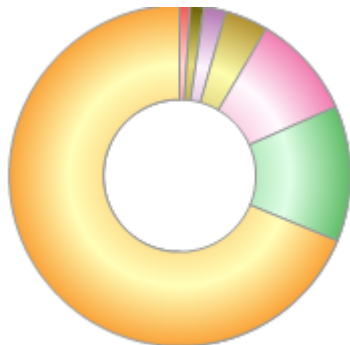
Website www.bailliegifford.com

Email enquiries@bailliegifford.com

Baillie Gifford Global Discovery B Acc

Asset Allocation (30 Apr 2024)

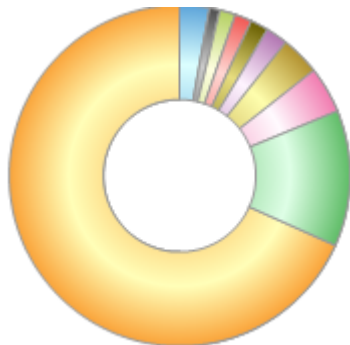
Rank	Asset Classes	%
1	American Equity	68.87
2	UK Equity	12.89
3	Emerging Markets Equity	9.85
4	European Equity	4.08
5	Japanese Equity	2.10
6	Developed Asia Equity	1.26
7	Cash	0.96



Powered by data from FE fundinfo

Regional Breakdown (30 Apr 2024)

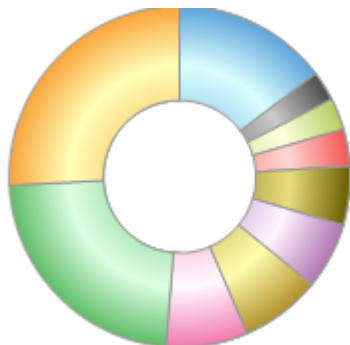
Rank	Regions	%
1	United States	68.31
2	UK	12.89
3	China	4.40
4	Israel	3.74
5	Japan	2.10
6	Brazil	1.71
7	France	1.59
8	Denmark	1.54
9	Cash and Deposits	0.96
10	Others	2.76



Powered by data from FE fundinfo

Sector Breakdown (30 Apr 2024)

Rank	Sectors	%
1	Biotechnology/Medical	25.79
2	Software	22.92
3	Aerospace & Defence	7.76
4	Healthcare & Medical Products	7.58
5	Health Care	6.30
6	Electronic & Electrical Equipment	5.61
7	Semi Conductors	3.49
8	Services	3.02
9	Financials	2.80
10	Others	14.73



Powered by data from FE fundinfo

Top Holdings (30 Apr 2024)

Rank	Largest Holdings	%
1	Alnylam Pharmaceuticals	5.80
2	AeroVironment	4.31

Baillie Gifford Global Discovery B Acc

Rank	Largest Holdings	%
3	STAAR Surgical	3.58
4	Axon Enterprise	3.45
5	Appian	3.44
6	JFrog	3.10
7	LiveRamp	3.03
8	Exact Sciences	2.89
9	Ocado	2.79
10	Schrödinger	2.72