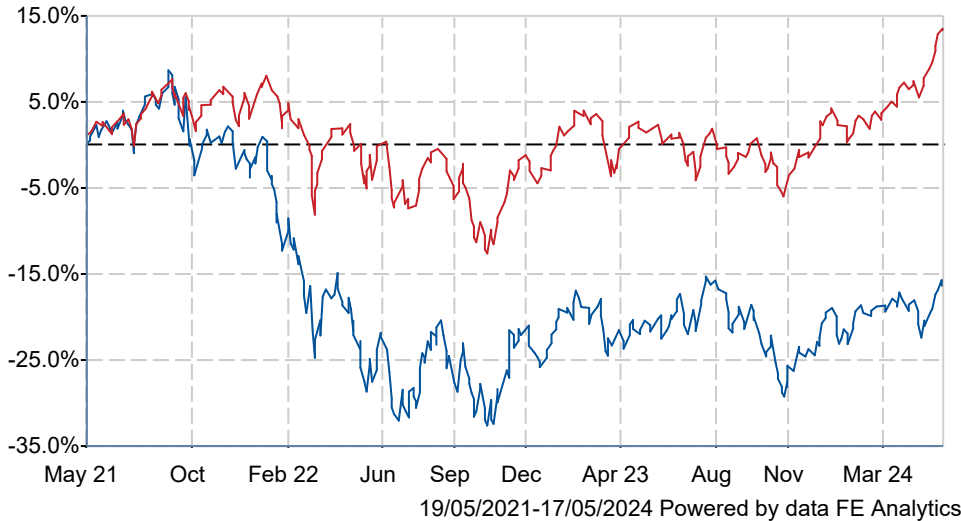




Baillie Gifford UK Equity Alpha B Acc

What is the Fund's objective?

The fund aims to outperform (after deduction of costs) the FTSE All-Share Index by at least 2% per annum over rolling five-year periods.

Cumulative Performance



	3m	6m	1yr	3yrs	5yrs
 Baillie Gifford UK Equity Alpha B Acc	+3.6	+9.9	+6.8	-17.8	-7.4
 IA UK All Companies	+9.6	+14.5	+11.5	+12.8	+27.1
Rank within sector	226 / 234	223 / 234	201 / 232	219 / 224	213 / 214
Quartile	4	4	4	4	4

Fund Information

Sector	IA UK All Companies
Asset Class	Equity
Launch Date	07-Apr-1995
Fund Size	£525.8m / \$668.0m (17-May-2024)
Fund Manager	Milena Mileva

How does FE fundinfo rate this fund?

FE fundinfo Crown Rating	
AFI	NO
Risk Score	153

Investment Details

Initial Charge	0.00%
Annual Charges	0.47%
Note to charges	n/a
Minimum Initial Investment	£ 100,000
Minimum Additional Investment	n/a
Dividend Policy	Jan 31 (Final), Jul 31

Prices

Unit Type	ACC
Mid	675.60[GBX]
Price Date	17 May 2024
Yield	1.45

Codes

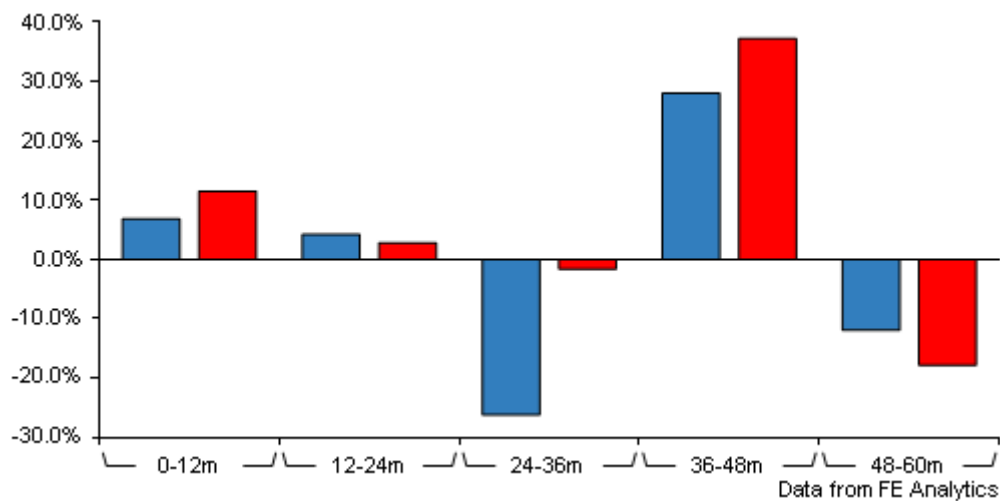
Citicode	BG09
SEDOL	0585819
ISIN	GB0005858195

Contact Details

Address	Calton Square, 1 Greenside Row, Edinburgh, EH1 3AN
Telephone numbers	+44 (0) 131 275 2000 (Main Number)
Website	www.bailliegifford.com
Email	enquiries@bailliegifford.com

Baillie Gifford UK Equity Alpha B Acc

Discrete Performance



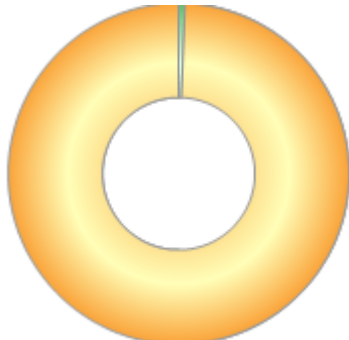
	0-12m	12m-24m	24m-36m	36m-48m	48m-60m
<div></div> Baillie Gifford UK Equity Alpha B Acc	+6.8	+4.2	-26.2	+28.0	-11.9
<div></div> IA UK All Companies	+11.5	+2.8	-1.6	+37.2	-17.8
Rank within sector	201 / 232	116 / 230	223 / 224	163 / 219	38 / 214
Quartile	4	3	4	3	1

All prices in Pence Sterling (GBX) unless otherwise specified. Price total return performance figures are calculated on a bid price to bid price basis (mid to mid for OEICs) with net income (dividends) reinvested. Performance figures are shown in Pound Sterling (GBP).

Baillie Gifford UK Equity Alpha B Acc

Asset Allocation (31 Mar 2024)

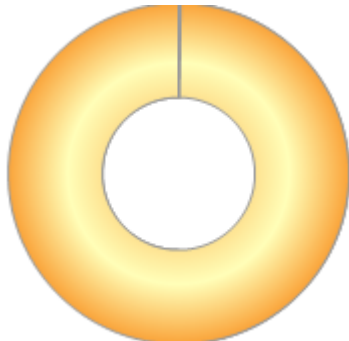
Rank	Asset Classes	%
1	UK Equities	99.40
2	Cash	0.60



Powered by data from FE fundinfo

Regional Breakdown (30 Apr 2024)

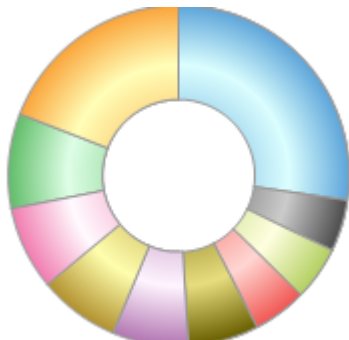
Rank	Regions	%
1	UK	99.77
2	Cash & Cash Equivalents	0.24



Powered by data from FE fundinfo

Sector Breakdown (30 Apr 2024)

Rank	Sectors	%
1	Media	19.14
2	Information Technology	8.98
3	Leisure	7.89
4	Financials	7.74
5	Services	7.18
6	Trade	6.70
7	Machinery	5.11
8	Electronic & Electrical Equipment	5.10
9	Financial Services	4.86
10	Others	27.30



Powered by data from FE fundinfo

Top Holdings (30 Apr 2024)

Rank	Largest Holdings	%
1	4imprint	7.95
2	Games Workshop	7.89

Baillie Gifford UK Equity Alpha B Acc

Rank	Largest Holdings	%
3	Experian	7.18
4	Auto Trader	7.06
5	Wise	4.86
6	Kainos	4.23
7	Renishaw	3.96
8	Ashtead	3.81
9	Softcat	3.66
10	AJ Bell	3.44