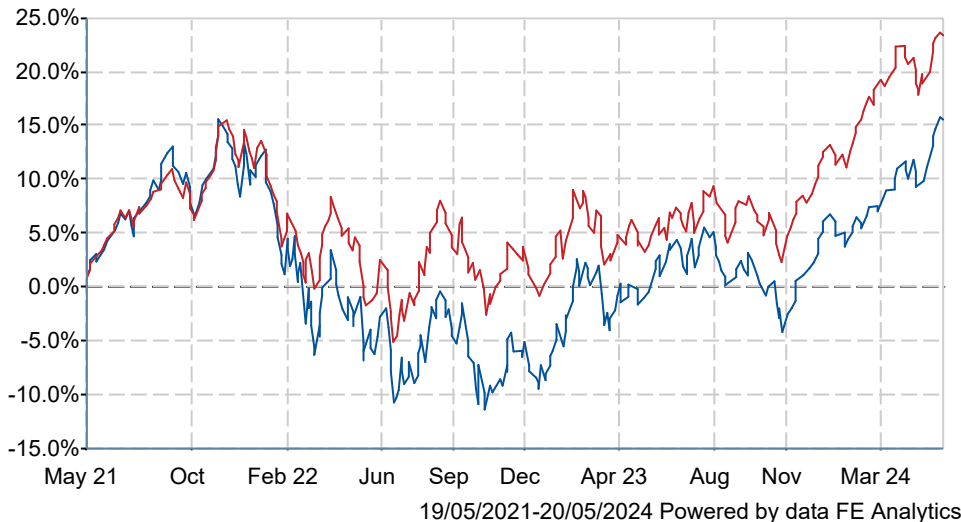


## EdenTree Responsible and Sustainable Global Equity B

### What is the Fund's objective?

To achieve long-term capital growth over five years or more with an income through a diversified portfolio of international (including the UK) companies. The EdenTree Responsible and Sustainable Global Equity Fund seeks to invest in a portfolio of companies which make a positive contribution to society and the environment through sustainable and socially responsible practices.

### Cumulative Performance



	3m	6m	1yr	3yrs	5yrs
EdenTree Responsible and Sustainable Global Equity B	+7.3	+14.3	+14.8	+14.7	+48.0
IA Global	+5.3	+13.9	+16.1	+22.6	+59.9
Rank within sector	67 / 563	276 / 556	375 / 546	347 / 478	300 / 402
Quartile	1	2	3	3	3

### Fund Information

Sector	IA Global
Asset Class	Equity
Launch Date	13-Sep-1999
Fund Size	£310.3m / \$394.2m (20-May-2024)
Fund Manager	David Osfield Thomas Fitzgerald

### How does FE fundinfo rate this fund?

FE fundinfo Crown Rating	
AFI	NO
Risk Score	102

### Investment Details

Initial Charge	0.00%
Annual Charges	0.75%
Note to charges	n/a
Minimum Initial Investment	£ 1,000,000
Minimum Additional Investment	£ 1,000,000
Dividend Policy	Jan 01 (Final), Jul 01

### Prices

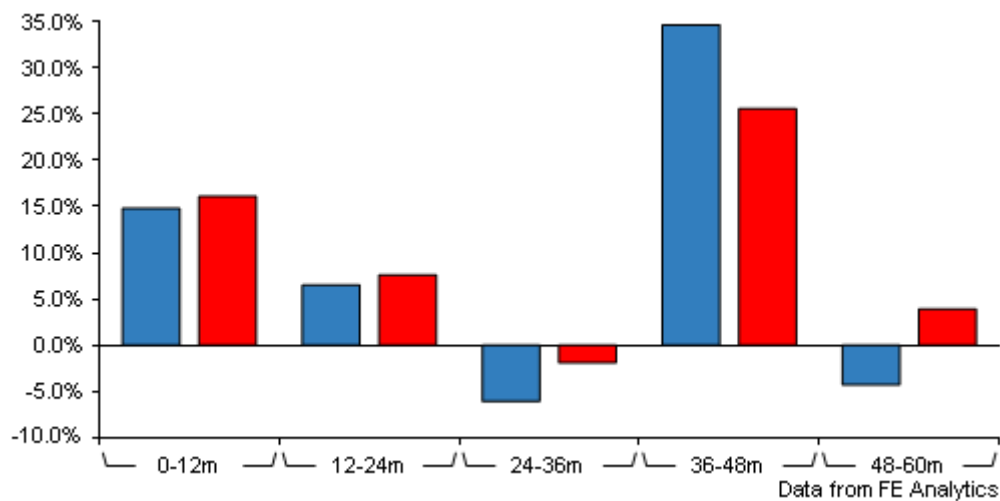
Unit Type	INC
Mid	380.80(GBX)
Price Date	20 May 2024
Yield	1.45

### Codes

Citicode	FR59
SEDOL	0844907
ISIN	GB0008449075

# EdenTree Responsible and Sustainable Global Equity B

## Discrete Performance



	0-12m	12m-24m	24m-36m	36m-48m	48m-60m
EdenTree Responsible and Sustainable Global Equity B	+14.8	+6.5	-6.1	+34.7	-4.3
IA Global	+16.1	+7.6	-1.9	+25.6	+3.9
Rank within sector	375 / 546	151 / 522	375 / 478	116 / 441	288 / 402
Quartile	3	2	4	2	3

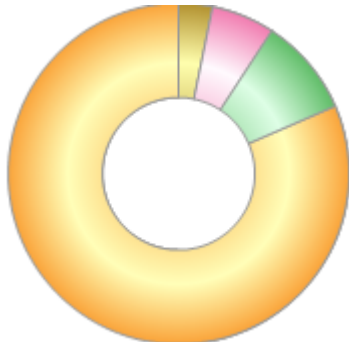
All prices in Pence Sterling (GBX) unless otherwise specified. Price total return performance figures are calculated on a bid price to bid price basis (mid to mid for OEICs) with net income (dividends) reinvested. Performance figures are shown in Pound Sterling (GBP).

## Contact Details

Address	24 Monument Street, London, EC3R 8AJ
Telephone numbers	+44 800 011 3821 (Main Number)
Website	<a href="http://www.edentreeim.com">www.edentreeim.com</a>
Email	<a href="mailto:ifa@edentreeim.com">ifa@edentreeim.com</a>

Asset Allocation (31 Mar 2024)

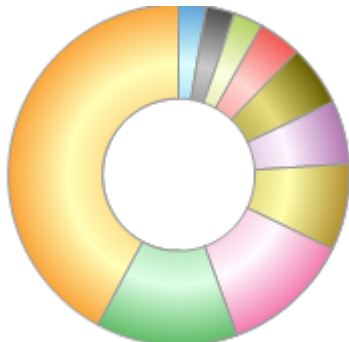
Rank	Asset Classes	%
1	Overseas Equities	81.50
2	UK Equities	9.34
3	Cash	5.97
4	Others	3.19



Powered by data from FE fundinfo

Regional Breakdown (31 Mar 2024)

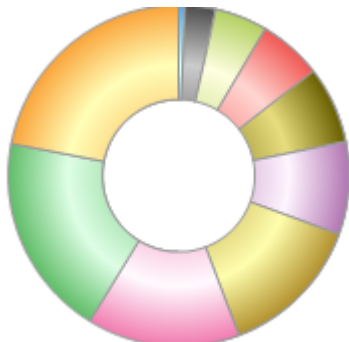
Rank	Regions	%
1	United States	42.17
2	United Kingdom	13.39
3	Other	12.29
4	France	8.15
5	Cash	5.97
6	Taiwan	5.83
7	Italy	4.08
8	Japan	2.80
9	Norway	2.68
10	Denmark	2.64



Powered by data from FE fundinfo

Sector Breakdown (31 Mar 2024)

Rank	Sectors	%
1	Technology	21.99
2	Industrials	19.28
3	Health Care	14.51
4	Financials	13.71
5	Utilities	8.76
6	Consumer Discretionary	7.29
7	Cash	5.97
8	Basic Materials	5.04
9	Telecommunications	2.88
10	Other	0.57



Powered by data from FE fundinfo

Top Holdings (31 Mar 2024)

Rank	Largest Holdings	%
1	MICROSOFT CORP	5.66
2	ALPHABET INC-A	4.86

# EdenTree Responsible and Sustainable Global Equity B

Rank	Largest Holdings	%
3	TSMC	2.63
4	HARTFORD FINL SV	2.46
5	PRYSMIAN SPA	2.41
6	MEDTRONIC PLC	2.34
7	SSE PLC	2.28
8	VEOLIA ENVIRONNE	2.18
9	SANOFI	2.09
10	BRUKER CORP	2.06