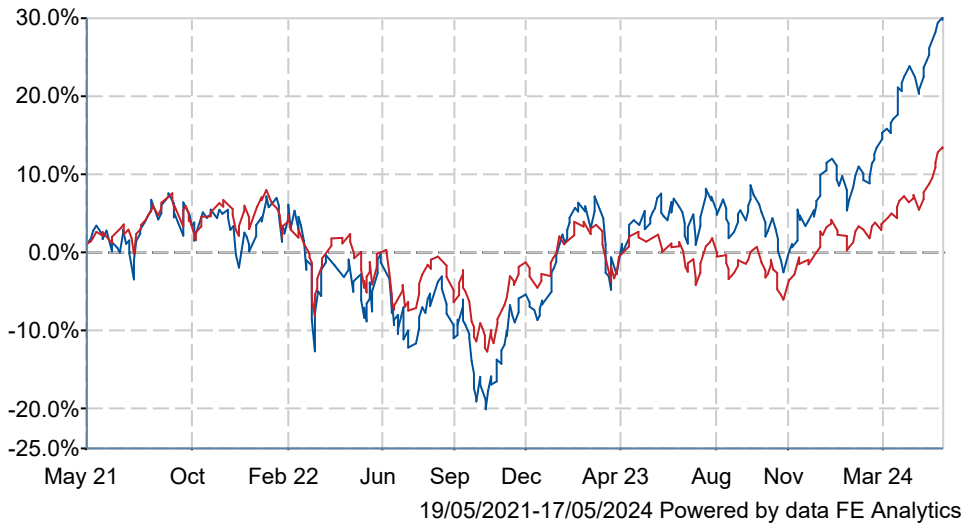


Artemis UK Select I Acc

What is the Fund's objective?

To grow capital over a five year period.

Cumulative Performance




	3m	6m	1yr	3yrs	5yrs
Artemis UK Select I Acc	+16.5	+23.9	+23.1	+28.9	+81.2
IA UK All Companies	+9.6	+14.5	+11.5	+12.8	+27.1
Rank within sector	4 / 234	3 / 234	2 / 232	32 / 224	1 / 214
Quartile	1	1	1	1	1

Fund Information

Sector	IA UK All Companies
Asset Class	Equity
Launch Date	03-Apr-1998
Fund Size	£2,408.6m / \$3,059.9m (17-May-2024)
Fund Manager	Ed Legget Ambrose Faulks

How does FE fundinfo rate this fund?

Alpha Manager Rating	Ed Legget
FE fundinfo Crown Rating	
AFI	NO
Risk Score	138

Investment Details

Initial Charge	0.00%
Annual Charges	0.75%
Note to charges	Initial Charges: max.;
Minimum Initial Investment	£ 250,000
Minimum Additional Investment	£ 500
Dividend Policy	Jan 01 (Final)

Prices

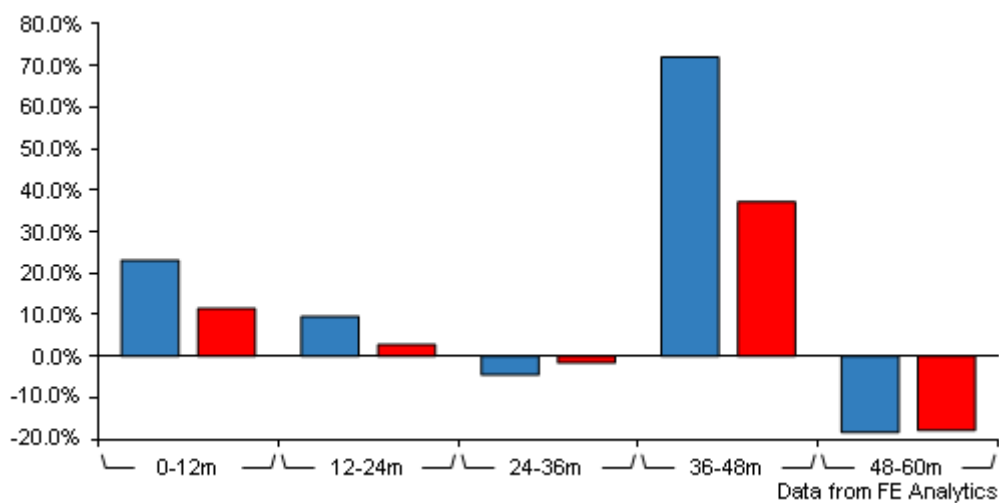
Unit Type	ACC
Mid	995.63(GBX)
Price Date	17 May 2024
Yield	2.73

Codes

Citicode	KVH1
SEDOL	B2PLJG0
ISIN	GB00B2PLJG05

Artemis UK Select I Acc

Discrete Performance



	0-12m	12m-24m	24m-36m	36m-48m	48m-60m
Artemis UK Select I Acc	+23.1	+9.6	-4.5	+72.0	-18.3
IA UK All Companies	+11.5	+2.8	-1.6	+37.2	-17.8
Rank within sector	2 / 232	10 / 230	144 / 224	9 / 219	131 / 214
Quartile	1	1	3	1	3

All prices in Pence Sterling (GBX) unless otherwise specified. Price total return performance figures are calculated on a bid price to bid price basis (mid to mid for OEICs) with net income (dividends) reinvested. Performance figures are shown in Pound Sterling (GBP).

Contact Details

Address Cassini House 57, St James's Street London, SW1A 1LD

Telephone numbers 0800 092 2051 (Main Number)

Website www.artemisfunds.com

Email salesupport@artemisfunds.com

Artemis UK Select I Acc

Asset Allocation (31 Mar 2024)

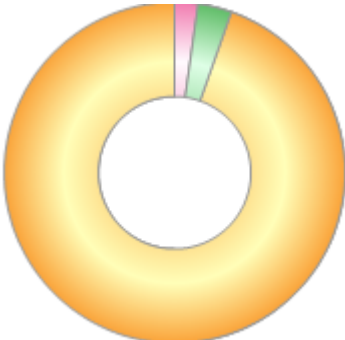
Rank	Asset Classes	%
1	UK Equities	94.58
2	Money Market	3.20
3	Irish Equities	2.22



Powered by data from FE fundinfo

Regional Breakdown (31 Mar 2024)

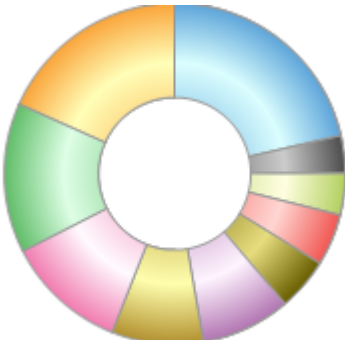
Rank	Regions	%
1	UK	94.58
2	Cash & Cash Equivalents	3.20
3	Ireland	2.22



Powered by data from FE fundinfo

Sector Breakdown (31 Mar 2024)

Rank	Sectors	%
1	Banks	18.34
2	Travel	14.23
3	Financial Services	11.49
4	Oil & Gas	8.68
5	Aerospace & Defence	8.54
6	Household Goods	4.99
7	Retailers - General	4.88
8	Insurance	3.85
9	General Industrials	3.56
10	Others	21.44



Powered by data from FE fundinfo

Top Holdings (31 Mar 2024)

Rank	Largest Holdings	%
1	BARCLAYS PLC COMMON STOCK GBP 25	5.57
2	NATWEST GROUP PLC COMMON STOCK GBP 107.69	5.16

Artemis UK Select I Acc

Rank	Largest Holdings	%
3	3I GROUP PLC	5.13
4	ROLLS-ROYCE HOLDINGS PLC	4.81
5	SHELL PLC	4.40
6	BP PLC COMMON STOCK GBP 0.25	4.28
7	MELROSE INDUSTRIES PLC	3.73
8	VISTRY GROUP PLC	3.64
9	Oxford Instruments	3.38
10	STANDARD CHARTERED PLC SHS	2.92