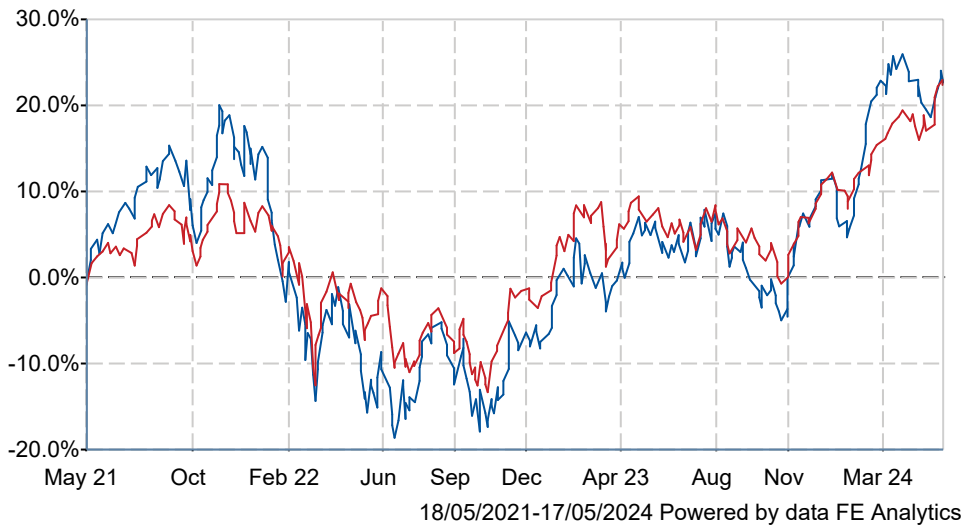


Man GLG Continental European Growth C Professional

What is the Fund's objective?

Man GLG Continental European Growth Fund (the 'Fund') is a long-only, all-cap European equity fund that invests in Europe's strongest companies through a focussed, bottom-up research approach.

Cumulative Performance



	3m	6m	1yr	3yrs	5yrs
Man GLG Continental European Growth C Professional	+1.4	+14.6	+15.9	+22.6	+63.6
IA Europe Excluding UK	+7.1	+14.3	+14.5	+22.6	+55.3
Rank within sector	136 / 143	67 / 143	53 / 143	85 / 136	35 / 129
Quartile	4	2	2	3	2

Fund Information

Sector	IA Europe Excluding UK
Asset Class	Equity
Launch Date	30-Jun-1998
Fund Size	£1,215.6m / \$1,544.3m (10-May-2024)
Fund Manager	Rory Powe Virginia Nordback

How does FE fundinfo rate this fund?

FE fundinfo Crown Rating	
AFI	 
Risk Score	148

Investment Details

Initial Charge	0.00%
Annual Charges	0.75%
Note to charges	n/a
Minimum Initial Investment	£ 500,000
Minimum Additional Investment	£ 1,000
Dividend Policy	Jun 01 (Final)

Prices

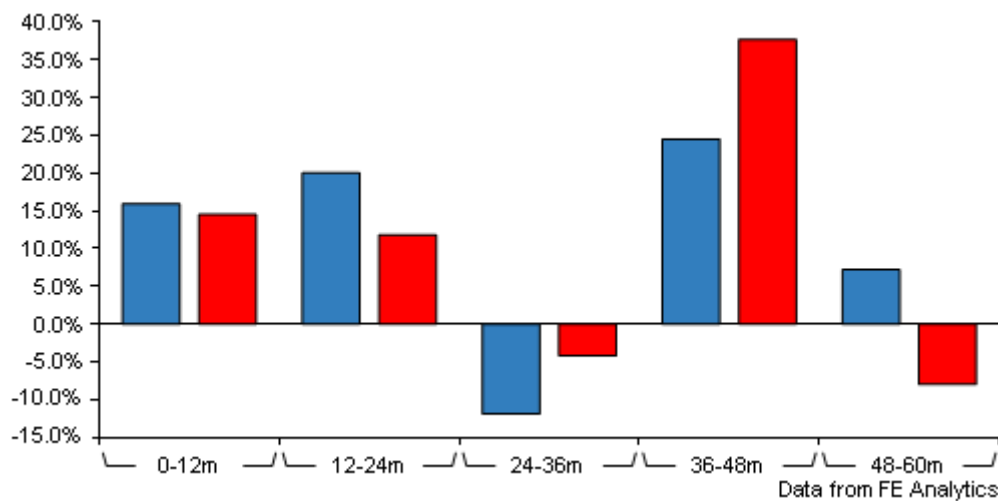
Unit Type	ACC
Mid	934.90[GBX]
Price Date	17 May 2024
Yield	0.26

Codes

Citicode	ZJ54
SEDOL	B011948
ISIN	GB00B0119487

Man GLG Continental European Growth C Professional

Discrete Performance



	0-12m	12m-24m	24m-36m	36m-48m	48m-60m
Man GLG Continental European Growth C Professional	+15.9	+20.0	-11.9	+24.5	+7.2
IA Europe Excluding UK	+14.5	+11.8	-4.2	+37.7	-8.0
Rank within sector	53 / 143	7 / 142	129 / 136	123 / 131	4 / 129
Quartile	2	1	4	4	1

All prices in Pence Sterling (GBX) unless otherwise specified. Price total return performance figures are calculated on a bid price to bid price basis (mid to mid for OEICs) with net income (dividends) reinvested. Performance figures are shown in Pound Sterling (GBP).

Contact Details

Address	GLG Partners LP, Riverbank House, 2 Swan Lane, London, United Kingdom, United Kingdom, EC4R 3AD
Telephone numbers	+44 (0) 20 7016 7000 (Main Number)
Website	www.glgpartners.com
Email	info@glgpartners.com