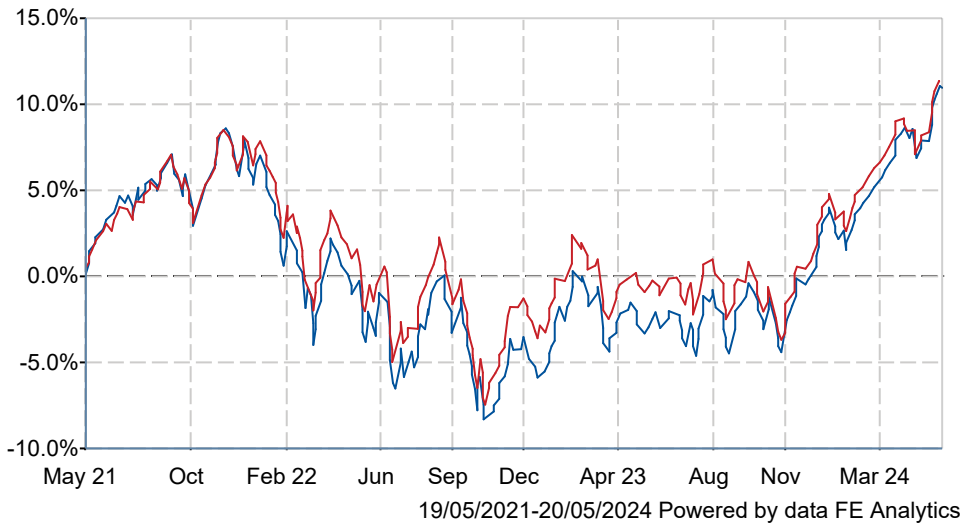


Close Managed Balanced X Acc

What is the Fund's objective?

The investment objective of the Close Managed Balanced Fund is to generate capital growth with some income over the medium term (i.e. more than 5 years).

Cumulative Performance



	3m	6m	1yr	3yrs	5yrs
Close Managed Balanced X Acc	+6.1	+11.2	+13.8	+11.1	+30.4
IA Mixed Investment 40-85% Shares	+5.1	+10.5	+11.2	+11.3	+28.9
Rank within sector	44 / 218	79 / 218	58 / 213	99 / 196	80 / 169
Quartile	1	2	2	3	2

Fund Information

Sector	IA Mixed Investment 40-85% Shares
Asset Class	Mixed Asset
Launch Date	17-Oct-2011
Fund Size	£481.6m / \$611.8m (17-May-2024)
Fund Manager	James Davies Matthew Stanesby

How does FE fundinfo rate this fund?

FE fundinfo Crown Rating	
AFI	NO
Risk Score	68

Investment Details

Initial Charge	0.00%
Annual Charges	n/a
Note to charges	Initial Charges ;
Minimum Initial Investment	£ 1,000
Minimum Additional Investment	£ 250
Dividend Policy	Apr 01, Oct 01 (Final)

Prices

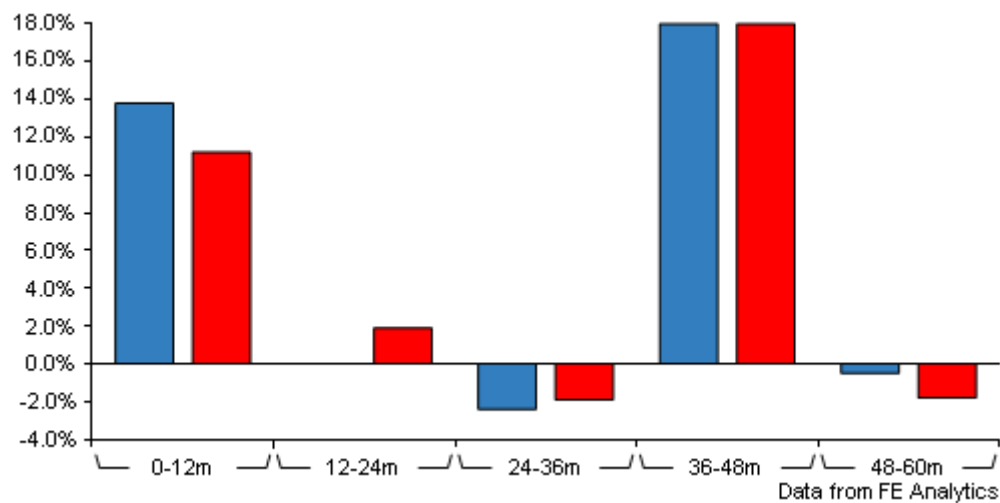
Unit Type	ACC
Mid	315.80(GBX)
Price Date	20 May 2024
Yield	1.52

Codes

Citicode	GOXK
SEDOL	B8H6TT8
ISIN	GB00B8H6TT84

Close Managed Balanced X Acc

Discrete Performance



	0-12m	12m-24m	24m-36m	36m-48m	48m-60m
Close Managed Balanced X Acc	+13.8	+0.0	-2.4	+18.0	-0.5
IA Mixed Investment 40-85% Shares	+11.2	+1.9	-1.9	+18.0	-1.8
Rank within sector	58 / 213	123 / 207	137 / 196	142 / 182	37 / 169
Quartile	2	3	3	4	1

All prices in Pence Sterling (GBX) unless otherwise specified. Price total return performance figures are calculated on a bid price to bid price basis (mid to mid for OEICs) with net income (dividends) reinvested. Performance figures are shown in Pound Sterling (GBP).

Contact Details

Address 10, Crown Place, London, EC2A 4FT
Telephone 0370 606 6452 (Main Number)
numbers
Website www.closebrothersam.com
Email Fund.Operations@closebrothers.com

Close Managed Balanced X Acc

Asset Allocation (30 Apr 2024)

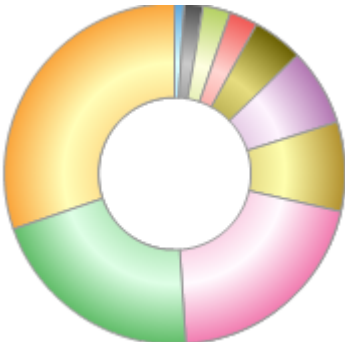
Rank	Asset Classes	%
1	US equity	20.77
2	UK equity	20.36
3	Fixed interest global/dynamic	13.71
4	Alternatives	9.14
5	Europe ex UK equity	8.46
6	Global equity	7.31
7	Asia ex Japan equity	4.84
8	Fixed interest corporate bond	3.85
9	Fixed interest gilt	3.55
10	Others	8.01



Powered by data from FE fundinfo

Regional Breakdown (30 Apr 2024)

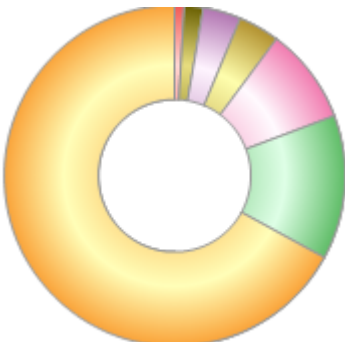
Rank	Regions	%
1	Fixed interest global/dynamic	30.25
2	US equity	20.77
3	UK equity	20.36
4	Europe ex UK equity	8.46
5	Global equity	7.31
6	Asia ex Japan equity	4.84
7	Japan equity	2.70
8	Emerging markets equity	2.64
9	Cash	1.76
10	Other	0.91



Powered by data from FE fundinfo

Sector Breakdown (30 Apr 2024)

Rank	Sectors	%
1	US equity	67.08
2	Fixed interest global/dynamic	13.71
3	Alternatives	9.14
4	Fixed interest corporate bond	3.85
5	Fixed interest gilt	3.55
6	Cash	1.76
7	Other	0.91



Powered by data from FE fundinfo

Top Holdings (30 Apr 2024)

Rank	Largest Holdings	%
1	Brown Advisory US Flexible Equity Acc C USD	4.85
2	Vanguard Inv Ser S&P 500 Ucits Etf Inc	4.80

Close Managed Balanced X Acc

Rank	Largest Holdings	%
3	Ishares Core Ftse 100 Ucits Etf Dist	3.93
4	Premier Miton UK Value Opportunities Fund A	3.88
5	Artemis Corporate Bond F GBP Inc	3.85
6	Brown Advisory Fds Global Leaders C Acc	3.69
7	Liontrust Fund Par Special Sits Ins Inc	3.58
8	Schroder International Selection Fund Asian Total Return	3.32
9	JP Morgan UK Equity Plus S GBP Acc	3.32
10	Schroder Income Z Inc	3.11