

WS Whitman UK Small Cap Growth C Acc GBP

What is the Fund's objective?

The investment objective is to achieve long term capital growth and to outperform the Numis Smaller Companies Index plus AIM ex Investment Companies over Rolling 5 year periods (after charges).


Cumulative Performance



	3m	6m	1yr	3yrs	5yrs
WS Whitman UK Small Cap Growth C Acc GBP	+2.1	+14.7	+26.4	-13.6	n/a
IA UK Smaller Companies	+1.4	+13.1	+20.1	-17.5	+27.5
Rank within sector	16 / 48	14 / 48	4 / 48	13 / 47	n/a
Quartile	2	2	1	2	n/a

Sector	IA UK Smaller Companies
Asset Class	Equity
Launch Date	09-Dec-2020
Fund Size	£25.6m / \$33.8m (21-Aug-2024)
Fund Manager	Joshua Northrop Sean O'flanagan

How does FE fundinfo rate this fund?

FE fundinfo Crown Rating	
Risk Score	106

Investment Details

Initial Charge	n/a
Annual Charges	0.75%
Note to charges	n/a
Minimum Initial Investment	£ 1,000,000
Minimum Additional Investment	£ 1,000,000
Dividend Policy	Jan 01 (Final)

Prices

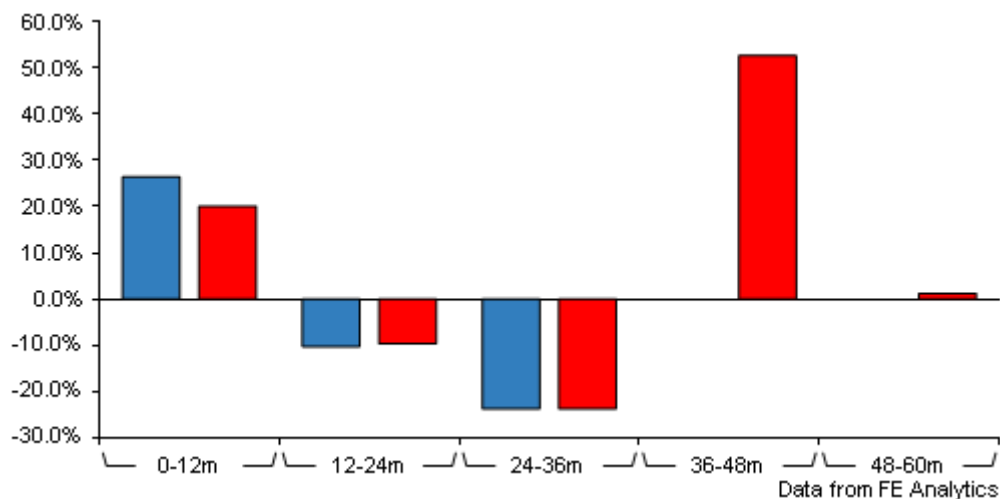
Unit Type	ACC
Mid	119.61(GBX)
Price Date	23 Aug 2024
Yield	0.72

Codes

Citicode	W0DU
SEDOL	BMTM516
ISIN	GB00BMTM5166

WS Whitman UK Small Cap Growth C Acc GBP

Discrete Performance



	0-12m	12m-24m	24m-36m	36m-48m	48m-60m
WS Whitman UK Small Cap Growth C Acc GBP	+26.4	-10.3	-23.8	n/a	n/a
IA UK Smaller Companies	+20.1	-9.7	-23.8	+52.7	+1.2
Rank within sector	4 / 48	24 / 48	22 / 47	n/a	n/a
Quartile	1	2	2	n/a	n/a

All prices in Pence Sterling (GBX) unless otherwise specified. Price total return performance figures are calculated on a bid price to bid price basis (mid to mid for OEICs) with net income (dividends) reinvested. Performance figures are shown in Pound Sterling (GBP).

Contact Details

Address 2nd Floor, 20 22 Bedford Row,
London, United Kingdom, WC1R
4EB

Telephone numbers 03459 220044 (Main Number)

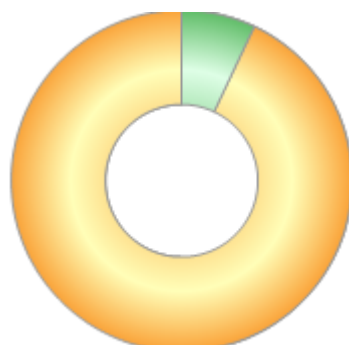
Website www.waystone.com

Email investorservices@linkgroup.co.uk

WS Whitman UK Small Cap Growth C Acc GBP

Asset Allocation (30 Nov 2023)

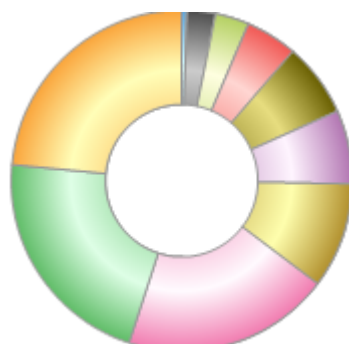
Rank	Asset Classes	%
1	UK Small Cap Companies	93.00
2	Money Market	7.00



Powered by data from FE fundinfo

Sector Breakdown (30 Nov 2023)

Rank	Sectors	%
1	Technology	23.50
2	Financials	21.50
3	Industrials	19.70
4	Business Services	10.00
5	Media	7.00
6	Cash	7.00
7	Health Care	4.90
8	Real Estate	3.20
9	Telecommunications	2.70
10	Consumer Goods	0.50



Powered by data from FE fundinfo

Top Holdings (30 Nov 2023)

Rank	Largest Holdings	%
1	Ashtead Technology	5.50
2	Renew Holdings	5.30
3	JTC	4.60
4	Johnson Service Group	4.50
5	XPS Pensions	4.20