

CT MM Lifestyle 5 B Inc

What is the Fund's objective?

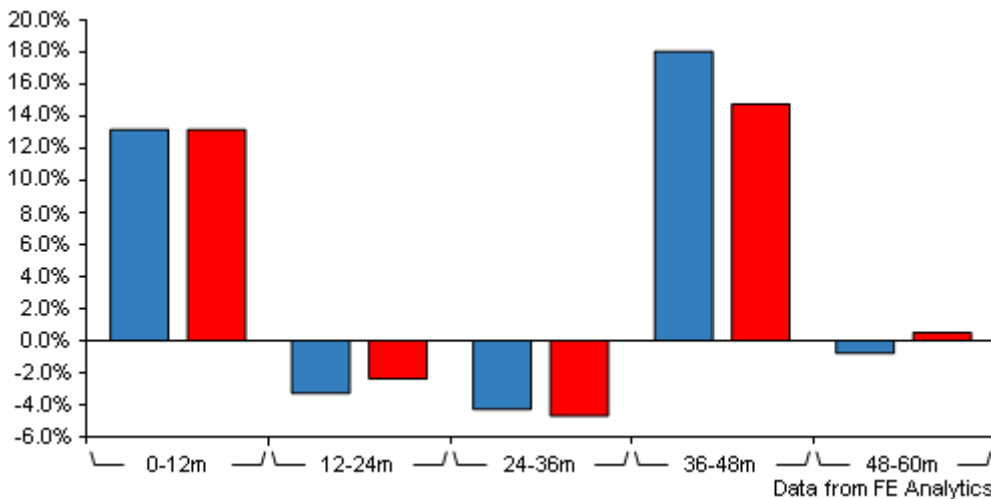
The Fund aims to secure a return combining capital and income.

Cumulative Performance



	3m	6m	1yr	3yrs	5yrs
CT MM Lifestyle 5 B Inc	+0.7	+5.6	+13.2	+4.7	+22.7
IA Volatility Managed	+1.5	+5.0	+13.2	+5.4	+21.6

Discrete Performance




	0-12m	12m-24m	24m-36m	36m-48m	48m-60m
CT MM Lifestyle 5 B Inc	+13.2	-3.3	-4.3	+18.1	-0.8
IA Volatility Managed	+13.2	-2.4	-4.7	+14.8	+0.5

All prices in Pence Sterling (GBX) unless otherwise specified. Price total return performance figures are calculated on a bid price to bid price basis (mid to mid for OEICs) with net income (dividends) reinvested. Performance figures are shown in Pound Sterling (GBP).

Sector	IA Volatility Managed
Asset Class	Mixed Asset
Launch Date	30-Mar-2007
Fund Size	£242.9m / \$320.5m (23-Aug-2024)
Fund Manager	Multi-Manager Team

How does FE fundinfo rate this fund?

FE fundinfo Crown Rating	
Risk Score	68

Investment Details

Initial Charge	0.00%
Annual Charges	0.50%
Note to charges	n/a
Minimum Initial Investment	£ 1,000,000
Minimum Additional Investment	£ 1,000,000
Dividend Policy	Jan 02, Apr 02, Jul 02, Oct 02 (Final)

Prices

Unit Type	INC
Mid	202.20(GBX)
Price Date	23 Aug 2024
Yield	2.30

Codes

Citicode	FMI1
SEDOL	B4YRCK8
ISIN	GB00B4YRCK80

CT MM Lifestyle 5 B Inc

Asset Allocation (31 Jul 2024)

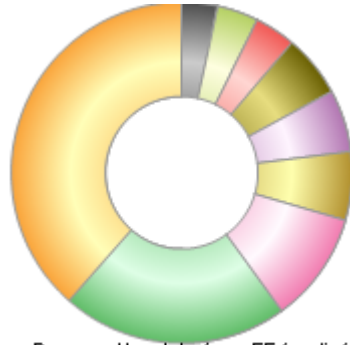
Rank	Asset Classes	%
1	UK Equities	23.60
2	North America Equities	21.50
3	International Bonds	10.50
4	UK Corporate Bonds	7.90
5	Europe Equities	5.90
6	Japan Equities	5.90
7	Absolute Return	4.00
8	UK Index Linked Bonds	4.00
9	Emerging Markets Equities	3.90
10	Others	12.80



Powered by data from FE fundinfo

Regional Breakdown (31 Jul 2024)

Rank	Regions	%
1	UK Index Linked Bonds	38.50
2	North America Equities	21.50
3	International Bonds	10.50
4	Property	6.50
5	Europe Equities	5.90
6	Japan Equities	5.90
7	Emerging Markets Equities	3.90
8	Asia Pacific Equities	3.90
9	Liquidity & Other	3.40



Powered by data from FE fundinfo

Top Holdings (31 Jul 2024)

Rank	Largest Holdings	%
1	iShares Core S&P 500 UCITS ETF	10.40
2	Premier Miton UK Value Opportunities Fund	6.30
3	Jupiter Global Equity Growth Unconstrained Fund	5.90
4	iShares Core Global Aggregate Bond UCITS ETF	5.80
5	Montanaro UK Income Fund	5.40
6	Pzena US Large Cap Value Fund	5.20
7	River and Mercantile UK Recovery Fund	3.90
8	iShares Core FTSE 100 UCITS ETF	3.10
9	Man GLG Sterling Corporate Bond Fund	3.10
10	Amundi UK Government Bond UCITS ETF Dist	3.00

Contact Details

Address BMO Global Asset Management, Exchange House, Primrose Street, London, United Kingdom, EC2A 2NY

Telephone numbers +44 (0) 20 7628 8000 (Main Number)

Website www.bmogam.com

Email invest@columbiathreadneedle.com