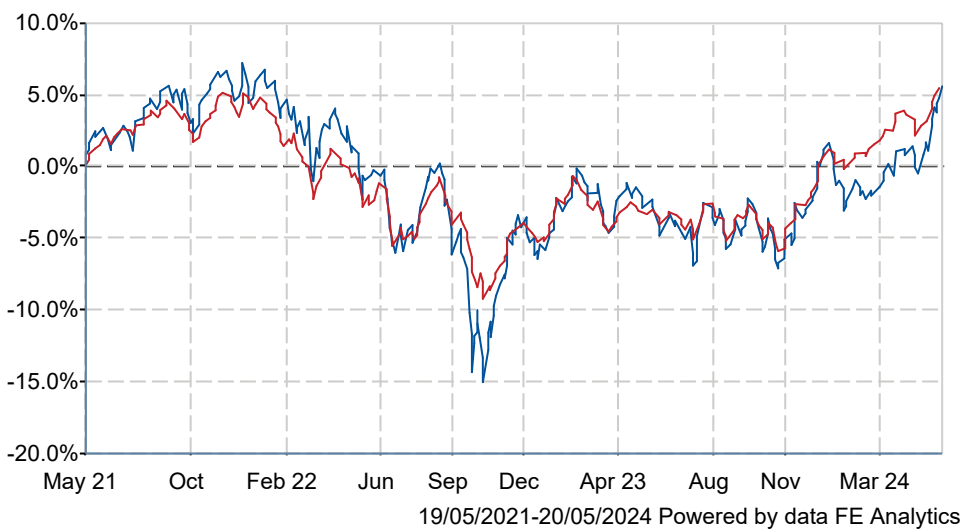


AXA Distribution Z Acc

What is the Fund's objective?

The Fund invests in a mix of shares in large and medium sized UK listed companies, UK Government bonds (the majority of which are linked to the rate of inflation) and cash. The Fund's typical asset mix would range between 50-60% investment in shares and 40-50% in UK Government bonds and cash. The fund manager selects shares in companies based upon their prospects for future growth in dividend payments following an in depth analysis of the quality of their business model, financial status, and corporate governance arrangements. Investments in UK Government bonds are diversified across a range of maturities (i.e., the length of time for full repayment of the bond by the Government).

Cumulative Performance



	3m	6m	1yr	3yrs	5yrs
AXA Distribution Z Acc	+6.5	+7.5	+7.5	+4.2	+11.2
IA Mixed Investment 20-60% Shares	+4.1	+8.1	+8.8	+5.5	+17.6
Rank within sector	11 / 190	137 / 190	145 / 185	110 / 165	123 / 147
Quartile	1	3	4	3	4

Fund Information

Sector	IA Mixed Investment 20-60% Shares
Asset Class	Mixed Asset
Launch Date	09-Apr-1999
Fund Size	£476.8m / \$605.8m (17-May-2024)
Fund Manager	Jamie Forbes-Wilson Nigel Yates

How does FE fundinfo rate this fund?

FE fundinfo Crown Rating	
AFI	NO
Risk Score	81

Investment Details

Initial Charge	0.00%
Annual Charges	0.75%
Note to charges	Initial Charges: max.;
Minimum Initial Investment	£ 100,000
Minimum Additional Investment	£ 5,000
Dividend Policy	Mar 01, Jun 01, Sep 01, Dec 01 (Final)

Prices

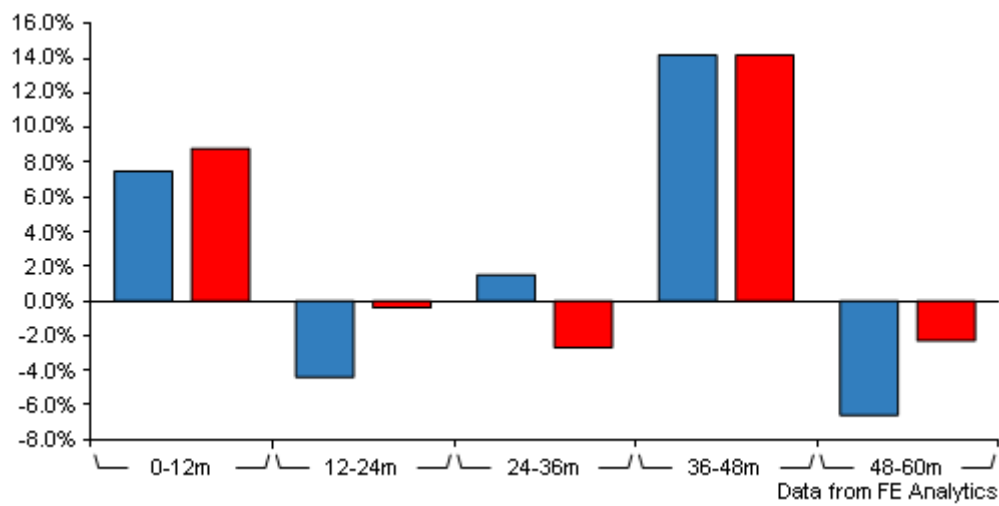
Unit Type	ACC
Mid	273.00(GBX)
Price Date	20 May 2024
Yield	3.90

Codes

Citicode	AD94
SEDOL	0616010
ISIN	GB0006160104

AXA Distribution Z Acc

Discrete Performance



	0-12m	12m-24m	24m-36m	36m-48m	48m-60m
AXA Distribution Z Acc	+7.5	-4.4	+1.5	+14.2	-6.6
IA Mixed Investment 20-60% Shares	+8.8	-0.4	-2.7	+14.2	-2.3
Rank within sector	145 / 185	156 / 174	24 / 165	113 / 156	103 / 147
Quartile	4	4	1	3	3

All prices in Pence Sterling (GBX) unless otherwise specified. Price total return performance figures are calculated on a bid price to bid price basis (mid to mid for OEICs) with net income (dividends) reinvested. Performance figures are shown in Pound Sterling (GBP).

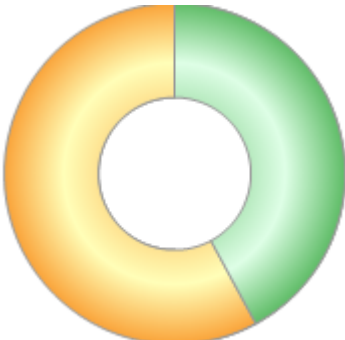
Contact Details

Address	AXA Investment Managers UK Limited, 22 Bishopsgate, London EC2N 4BQ, United Kingdom
Telephone numbers	0345 7775511 (Main Number)
Website	www.axa-im.co.uk

AXA Distribution Z Acc

Asset Allocation (30 Apr 2024)

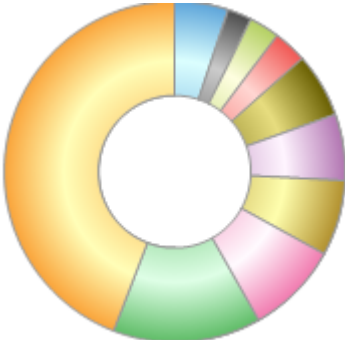
Rank	Asset Classes	%
1	Equity	57.86
2	Bonds	42.14



Powered by data from FE fundinfo

Sector Breakdown (30 Apr 2024)

Rank	Sectors	%
1	Bonds	44.27
2	IT	14.06
3	Financials	8.75
4	Health Care	7.16
5	Industrials	6.26
6	Cons. disc.	6.05
7	Communication Services	3.17
8	Cons. stap.	2.88
9	Materials	2.28
10	Others	5.12



Powered by data from FE fundinfo

Top Holdings (30 Apr 2024)

Rank	Largest Holdings	%
1	UK Inflation-Linked Gilt 0.125% 03/22/2026	7.01
2	UK Inflation-Linked Gilt 0.125% 03/22/2029	4.11
3	UK Inflation-Linked Gilt 0.125% 08/10/2028	3.71
4	UK Inflation-Linked Gilt 1.25% 11/22/2027	3.71
5	UK Inflation-Linked Gilt 2.5% 07/17/2024	3.62
6	AstraZeneca PLC	3.38
7	BP PLC	2.49
8	GlaxoSmithKline PLC	2.33
9	National Grid PLC	2.26
10	3i Group PLC	2.17