

# CT UK Smaller Cap Fund 2 Acc

## What is the Fund's objective?

The Fund aims to achieve medium to long term capital growth through investment primarily in UK smaller companies. The Fund invests mainly in a spread of equities of UK smaller companies. A proportion of the assets may comprise convertible stocks and other permitted investment vehicles which are linked to UK smaller companies.


## Cumulative Performance



	3m	6m	1yr	3yrs	5yrs
CT UK Smaller Cap Fund 2 Acc	+0.2	+10.4	+18.3	-9.1	+25.1
IA UK Smaller Companies	+1.5	+12.8	+20.4	-16.9	+28.3
Rank within sector	37 / 48	40 / 48	33 / 48	10 / 47	25 / 46
Quartile	4	4	3	1	3

Sector	IA UK Smaller Companies
Asset Class	Equity
Launch Date	04-Feb-1988
Fund Size	£12.9m / \$16.9m (13-Jun-2024)
Fund Manager	Catherine Stanley Patrick Newens

## How does FE fundinfo rate this fund?

FE fundinfo Crown Rating	
Risk Score	127

## Investment Details

Initial Charge	0.00%
Annual Charges	0.75%
Note to charges	n/a
Minimum Initial Investment	£ 500,000
Minimum Additional Investment	£ 500,000
Dividend Policy	Sep 01 (Final)

## Prices

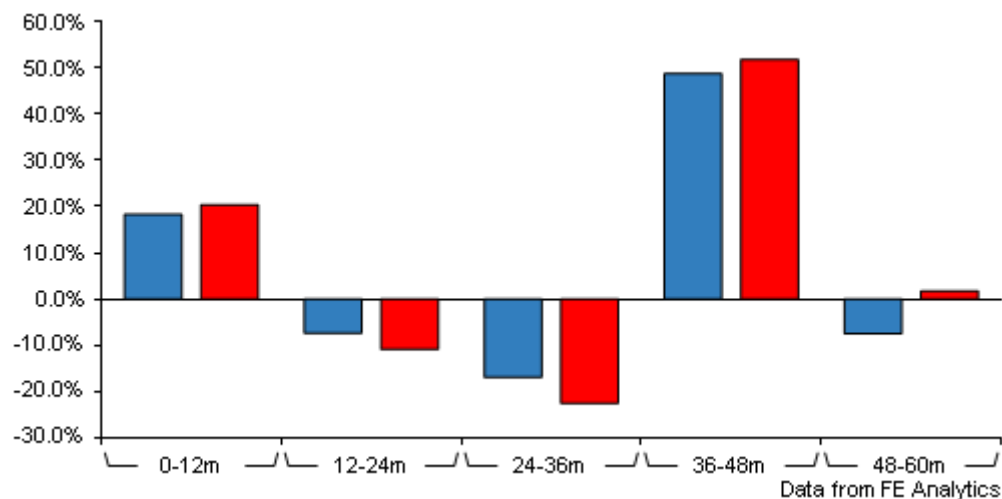
Unit Type	ACC
Mid	1404.00(GBX)
Price Date	13 Jun 2024
Yield	2.00

## Codes

Citicode	LU32
SEDOL	0584388
ISIN	GB0005843882

# CT UK Smaller Cap Fund 2 Acc

## Discrete Performance



	0-12m	12m-24m	24m-36m	36m-48m	48m-60m
CT UK Smaller Cap Fund 2 Acc	+18.3	-7.4	-17.0	+48.8	-7.5
IA UK Smaller Companies	+20.4	-10.9	-22.6	+51.9	+1.7
Rank within sector	33 / 48	12 / 48	7 / 47	30 / 46	39 / 46
Quartile	3	1	1	3	4

All prices in Pence Sterling (GBX) unless otherwise specified. Price total return performance figures are calculated on a bid price to bid price basis (mid to mid for OEICs) with net income (dividends) reinvested. Performance figures are shown in Pound Sterling (GBP).

## Contact Details

**Address** BMO Global Asset Management, Exchange House, Primrose Street, London, United Kingdom, EC2A 2NY

**Telephone numbers** +44 (0) 20 7628 8000 (Main Number)

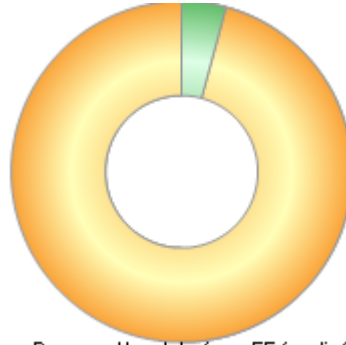
**Website** [www.bmogam.com](http://www.bmogam.com)

**Email** [invest@columbiathreadneedle.com](mailto:invest@columbiathreadneedle.com)

# CT UK Smaller Cap Fund 2 Acc

## Asset Allocation (30 Apr 2024)

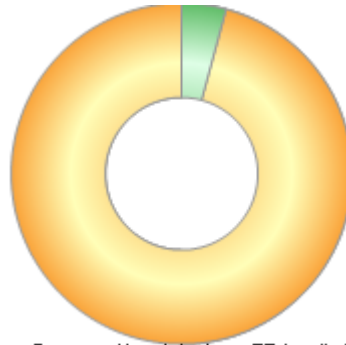
Rank	Asset Classes	%
1	UK Equities	95.80
2	Cash	4.20



Powered by data from FE fundinfo

## Regional Breakdown (30 Apr 2024)

Rank	Regions	%
1	UK	95.80
2	Cash	4.20



Powered by data from FE fundinfo

## Sector Breakdown (30 Apr 2024)

Rank	Sectors	%
1	Industrials	26.50
2	Consumer Discretionary	19.60
3	Financials	12.90
4	Technology	12.00
5	Real Estate	7.30
6	Basic Materials	4.90
7	Other	4.50
8	Cash	4.20
9	Consumer Staples	4.10
10	Energy	4.00



Powered by data from FE fundinfo

## Top Holdings (30 Apr 2024)

Rank	Largest Holdings	%
1	Kitwave Group Plc	3.20
2	Ashtead Technology Holdings plc	3.10

# CT UK Smaller Cap Fund 2 Acc

Rank	Largest Holdings	%
3	4imprint Group PLC	2.80
4	Shaftesbury Capital PLC	2.40
5	Next 15 Group PLC	2.10
6	Ascential PLC	2.00
7	Kier Group PLC	2.00
8	Baltic Classifieds Group PLC	1.90
9	Lancashire Holdings Ltd	1.90
10	OSB Group PLC	1.90