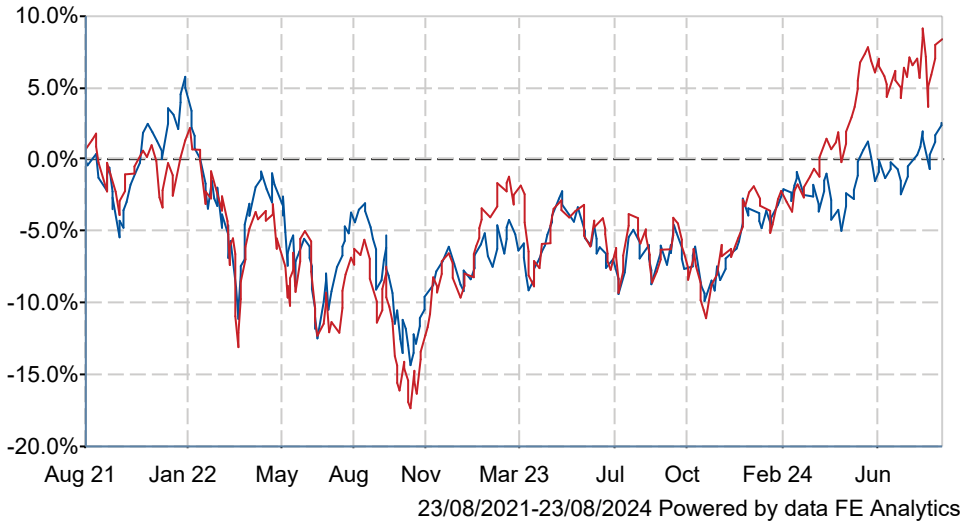




Trojan Income X Acc

What is the Fund's objective?

The investment objective of the Fund is to seek to achieve income with the potential for capital growth in the medium term (3 to 5 years).

Cumulative Performance





| | 3m | 6m | 1yr | 3yrs | 5yrs |
|---|----------|-----------|-----------|-----------|-----------|
|  Trojan Income X Acc | +1.4 | +3.1 | +11.6 | +2.5 | +7.9 |
|  IA UK All Companies | +1.0 | +10.3 | +18.2 | +8.3 | +30.8 |
| Rank within sector | 77 / 231 | 221 / 231 | 214 / 229 | 147 / 223 | 196 / 211 |
| Quartile | 2 | 4 | 4 | 3 | 4 |

Fund Information

| | |
|--------------|-------------------------------------|
| Sector | IA UK All Companies |
| Asset Class | Equity |
| Launch Date | 30-Sep-2004 |
| Fund Size | £656.6m / \$866.3m (31-Jul-2024) |
| Fund Manager | Blake Hutchins Fergus McCorkell |

How does FE fundinfo rate this fund?

| | |
|--------------------------|---|
| FE fundinfo Crown Rating |  |
| Risk Score |  |

Other ratings

| | |
|----------------------------|---|
| Morningstar Analyst Rating |  |
|----------------------------|---|

Investment Details

| | |
|-------------------------------|------------------------|
| Initial Charge | 5.00% |
| Annual Charges | 0.85% |
| Note to charges | n/a |
| Minimum Initial Investment | £ 50,000,000 |
| Minimum Additional Investment | £ 1,000 |
| Dividend Policy | Feb 01, Aug 01 (Final) |

Prices

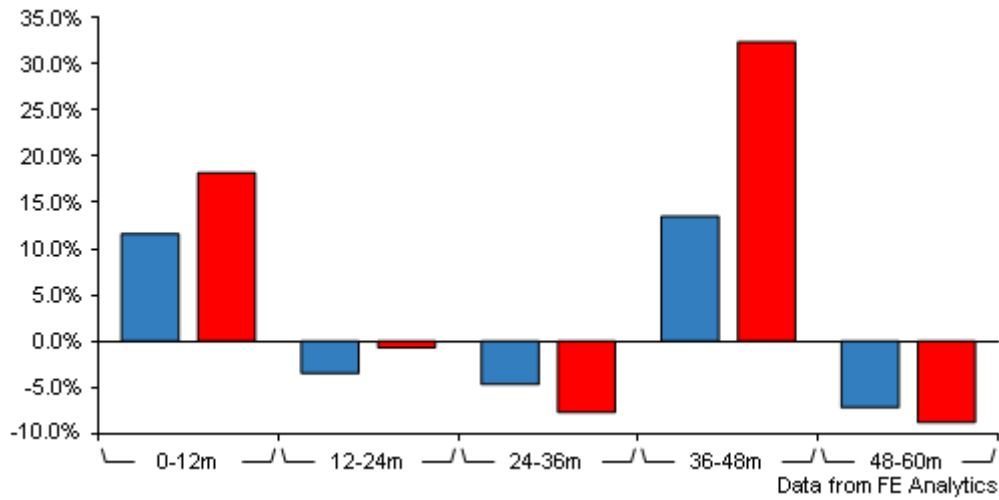
| | |
|------------|-------------|
| Unit Type | ACC |
| Mid | 118.79[GBX] |
| Price Date | 23 Aug 2024 |
| Yield | 2.88 |

Codes

| | |
|----------|--------------|
| Citicode | OAFU |
| SEDOL | BZ6CQ39 |
| ISIN | GB00BZ6CQ390 |

Trojan Income X Acc

Discrete Performance



| | 0-12m | 12m-24m | 24m-36m | 36m-48m | 48m-60m |
|---------------------|-----------|-----------|-----------|-----------|----------|
| Trojan Income X Acc | +11.6 | -3.5 | -4.7 | +13.5 | -7.2 |
| IA UK All Companies | +18.2 | -0.7 | -7.7 | +32.4 | -8.8 |
| Rank within sector | 214 / 229 | 182 / 228 | 109 / 223 | 218 / 218 | 78 / 211 |
| Quartile | 4 | 4 | 2 | 4 | 2 |

All prices in Pence Sterling (GBX) unless otherwise specified. Price total return performance figures are calculated on a bid price to bid price basis (mid to mid for OEICs) with net income (dividends) reinvested. Performance figures are shown in Pound Sterling (GBP).

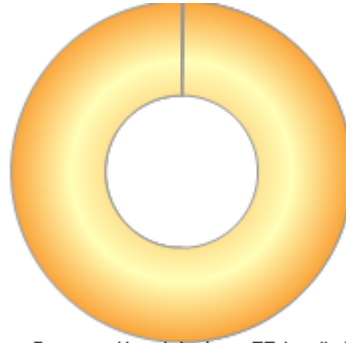
Contact Details

| | |
|-------------------|--|
| Address | Troy Asset Management Ltd, 33 Davies Street, London, W1K 4BP |
| Telephone numbers | 020 7499 4030 (Main Number) |
| Website | www.taml.co.uk |
| Email | busdev@taml.co.uk |

Trojan Income X Acc

Asset Allocation (31 Jul 2024)

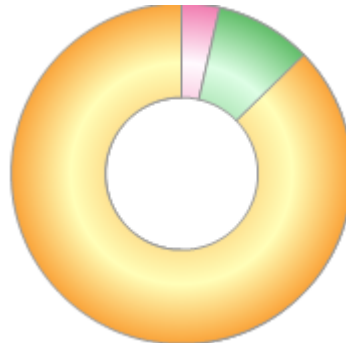
| Rank | Asset Classes | % |
|------|---------------|-------|
| 1 | Equities | 99.77 |
| 2 | Cash | 0.23 |
| | | |
| | | |
| | | |
| | | |
| | | |
| | | |
| | | |



Powered by data from FE fundinfo

Regional Breakdown (31 Jul 2024)

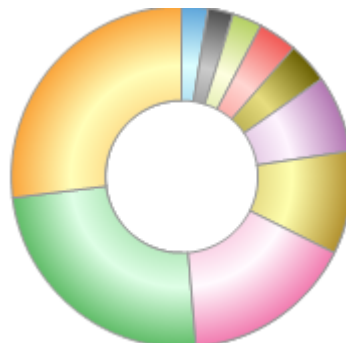
| Rank | Regions | % |
|------|-------------|-------|
| 1 | UK | 87.32 |
| 2 | US | 9.08 |
| 3 | Switzerland | 3.60 |
| 4 | Cash | 0.00 |
| | | |
| | | |
| | | |
| | | |
| | | |



Powered by data from FE fundinfo

Sector Breakdown (31 Jul 2024)

| Rank | Sectors | % |
|------|------------------------|-------|
| 1 | Industrials | 27.03 |
| 2 | Consumer Staples | 24.35 |
| 3 | Financials | 16.34 |
| 4 | Consumer Discretionary | 9.75 |
| 5 | Health Care | 7.25 |
| 6 | Information Technology | 3.87 |
| 7 | Real Estate | 3.74 |
| 8 | Utilities | 2.84 |
| 9 | Materials | 2.38 |
| 10 | Others | 2.45 |



Powered by data from FE fundinfo

Top Holdings (31 Jul 2024)

| Rank | Largest Holdings | % |
|------|------------------|------|
| 1 | Unilever | 7.00 |
| 2 | RELX | 6.62 |

Trojan Income X Acc

| Rank | Largest Holdings | % |
|------|-------------------|------|
| 3 | Diageo | 5.25 |
| 4 | Compass | 4.32 |
| 5 | Bunzl | 4.15 |
| 6 | LSEG | 4.08 |
| 7 | Reckitt Benckiser | 4.06 |
| 8 | Experian | 4.06 |
| 9 | Smiths | 2.91 |
| 10 | National Grid | 2.84 |