

Capital Group New Economy Fund (LUX) Z GBP

What is the Fund's objective?

The fund's investment objective is to achieve long- term growth of capital by investing in securities of companies that can benefit from innovation, exploit new technologies or provide products and services that meet the demands of an evolving global economy. The fund also aims to manage a carbon footprint that is generally at least 30% lower than the index, and evaluates and applies ESG and norms-based screening to implement a negative screening policy relating to investments in corporate issuers.

Cumulative Performance




	3m	6m	1yr	3yrs	5yrs
Capital Group New Economy Fund (LUX) Z GBP	+5.7	+20.7	+28.5	+17.3	n/a
IA Global	+2.1	+11.1	+15.1	+15.3	+49.9
Rank within sector	49 / 563	28 / 560	26 / 549	246 / 484	n/a
Quartile	1	1	1	3	n/a

Fund Information

Sector	IA Global
Asset Class	Equity
Launch Date	07-Nov-2019
Fund Size	£482.5m / \$617.7m (05-Jul-2024)
Fund Manager	Caroline Jones Harold H. La Mathews Cherian Richmond Wolf Reed Lowenstein Tomoko Fortune Lara Pellini Paul Benjamin

How does FE fundinfo rate this fund?

FE fundinfo Crown Rating	
AFI	NO
Risk Score	138

Other ratings

Morningstar Analyst Rating	
----------------------------	---

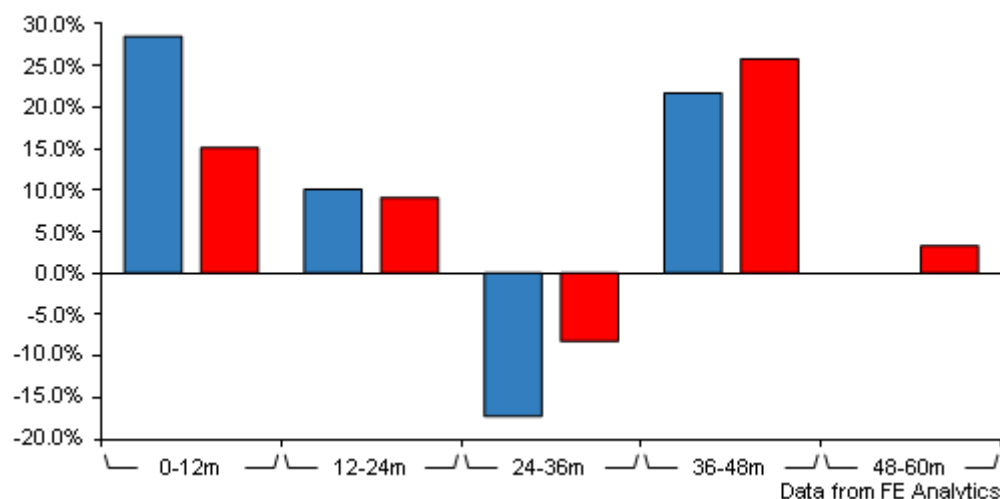
Investment Details

Initial Charge	5.25%
Annual Charges	0.75%
Note to charges	Initial Charges: max.;
Minimum Initial Investment	n/a
Minimum Additional Investment	n/a
Dividend Policy	Jan 02, Apr 01, Jul 01, Oct 01 (Final)

Prices

Unit Type	ACC
Mid	12.84(GBP)
Price Date	05 Jul 2024
Yield	n/a

Capital Group New Economy Fund (LUX) Z GBP



	0-12m	12m-24m	24m-36m	36m-48m	48m-60m
Capital Group New Economy Fund (LUX) Z GBP	+28.5	+10.1	-17.2	+21.7	n/a
IA Global	+15.1	+9.1	-8.2	+25.8	+3.3
Rank within sector	26 / 549	240 / 524	413 / 484	341 / 442	n/a
Quartile	1	2	4	4	n/a

All prices in Pence Sterling (GBX) unless otherwise specified. Price total return performance figures are calculated on a bid price to bid price basis (mid to mid for OEICs) with net income (dividends) reinvested. Performance figures are shown in Pound Sterling (GBP).

Codes

Citicode	QOEE
SEDOL	BJ7WS18
ISIN	LU2050928113

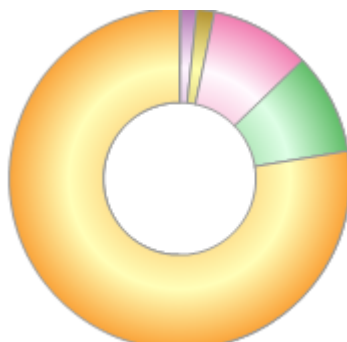
Contact Details

Address	40, Grosvenor Place, London, SW1X 7GG, UK, UK
Telephone numbers	+44 (0)20 7864 5000 (Main Number)
Website	www.capitalgroup.com
Email	UKSalesSupport@capitalgroup.com

Capital Group New Economy Fund (LUX) Z GBP

Asset Allocation (31 May 2024)

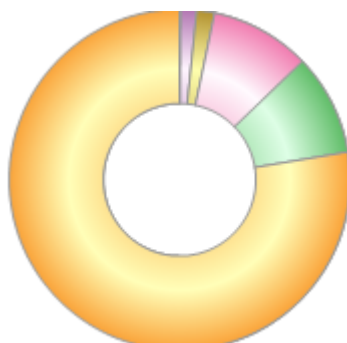
Rank	Asset Classes	%
1	North America Equities	77.60
2	Europe Equities	9.60
3	Emerging Markets Equities	9.50
4	Cash and equivalents	1.70
5	Japan Equities	1.50
6	Pacific ex Japan Equities	0.10



Powered by data from FE fundinfo

Regional Breakdown (31 May 2024)

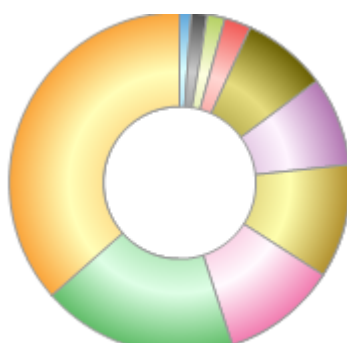
Rank	Regions	%
1	North America	77.60
2	Europe	9.60
3	Emerging Markets	9.50
4	Cash and equivalents	1.70
5	Japan	1.50
6	Pacific ex Japan	0.10



Powered by data from FE fundinfo

Sector Breakdown (31 May 2024)

Rank	Sectors	%
1	Information Technology	36.50
2	Health Care	18.50
3	Financials	10.90
4	Consumer Discretionary	10.80
5	Communication Services	8.50
6	Industrials	8.00
7	Energy	2.50
8	Cash and equivalents	1.70
9	Consumer Staples	1.50
10	Others	1.10



Powered by data from FE fundinfo

Top Holdings (31 May 2024)

Rank	Largest Holdings	%
1	Broadcom	6.50
2	Microsoft	5.90

Capital Group New Economy Fund (LUX) Z GBP

3	ISMC	4.00
4	Meta Platforms	3.60
5	Alphabet	3.40
6	Amazon.com	3.30
7	NVIDIA	3.20
8	Eli Lilly	2.40
9	Micron Technology	2.30
10	SK hynix	2.30