

## Wellington All-China Focus Equity N U Acc GBP

### What is the Fund's objective?

The Wellington All-China Focus Equity Fund is actively managed and seeks to generate long-term total returns in excess of the MSCI China All Shares Index by investing in companies located in, and/or conducting substantial business in China. The investment approach is based on proprietary bottom-up fundamental research, focused on identifying, what we believe to be, high quality companies with strong governance records.


### Cumulative Performance



	3m	6m	1yr	3yrs	5yrs
Wellington All-China Focus Equity N U Acc GBP	-8.9	-0.5	-9.5	-38.7	n/a
IA China/Greater China	-11.2	-3.1	-9.6	-36.1	-19.9
Rank within sector	16 / 64	20 / 64	35 / 64	37 / 57	n/a
Quartile	1	2	3	3	n/a

Sector	IA China/Greater China
Asset Class	Equity
Launch Date	08-Jan-2020
Fund Size	£53.6m / \$70.7m (23-Aug-2024)
Fund Manager	Bo Z Meunier

### How does FE fundinfo rate this fund?

FE fundinfo Crown Rating	
Risk Score	177

### Investment Details

Initial Charge	0.00%
Annual Charges	0.95%
Note to charges	n/a
Minimum Initial Investment	£ 5,000
Minimum Additional Investment	£ 1,000
Dividend Policy	n/a

### Prices

Unit Type	ACC
Mid	8.60(GBP)
Price Date	23 Aug 2024
Yield	n/a

### Codes

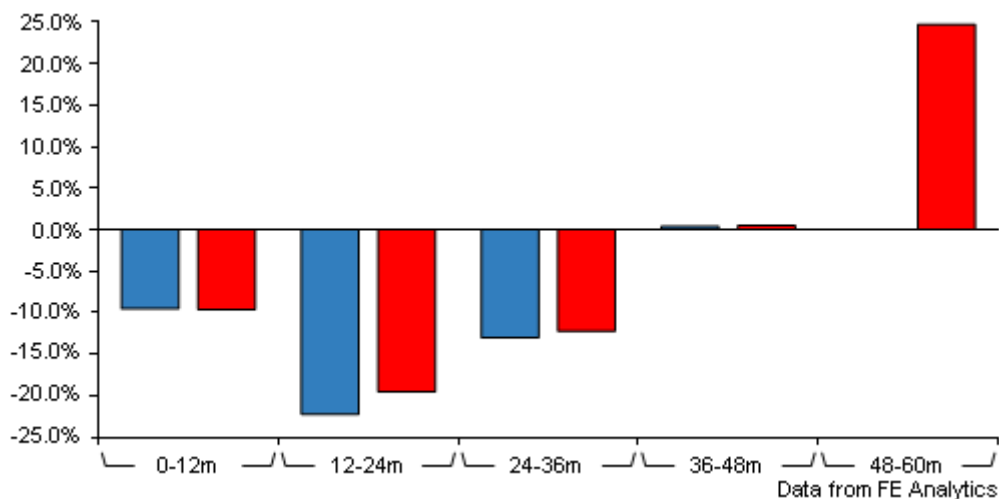
Citicode	QIRC
SEDOL	BK5STR8
ISIN	IE00BK5STR80

### Contact Details

Website	<a href="http://www.wellingtonfunds.com">www.wellingtonfunds.com</a>
Email	<a href="mailto:ukdistribution@wellington.com">ukdistribution@wellington.com</a>

# Wellington All-China Focus Equity N U Acc GBP

## Discrete Performance



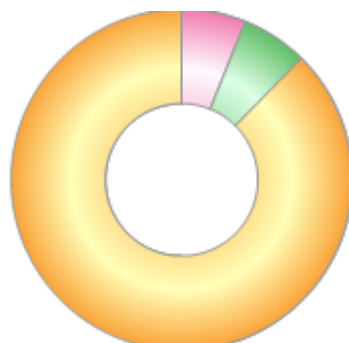
	0-12m	12m-24m	24m-36m	36m-48m	48m-60m
Wellington All-China Focus Equity N U Acc GBP	-9.5	-22.2	-13.0	+0.4	n/a
IA China/Greater China	-9.6	-19.5	-12.2	+0.5	+24.7
Rank within sector	35 / 64	41 / 62	28 / 57	27 / 52	n/a
Quartile	3	3	2	3	n/a

All prices in Pence Sterling (GBX) unless otherwise specified. Price total return performance figures are calculated on a bid price to bid price basis (mid to mid for OEICs) with net income (dividends) reinvested. Performance figures are shown in Pound Sterling (GBP).

# Wellington All-China Focus Equity N U Acc GBP

## Asset Allocation (31 Jul 2024)

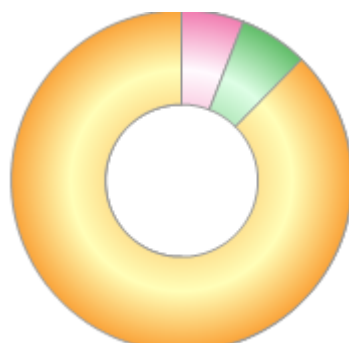
Rank	Asset Classes	%
1	Chinese Equities	87.65
2	Hong Kong Equities	6.25
3	Money Market	6.12



Powered by data from FE fundinfo

## Regional Breakdown (31 Jul 2024)

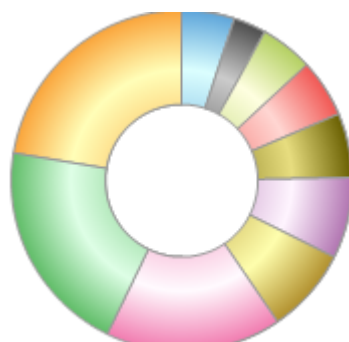
Rank	Regions	%
1	China	87.65
2	Hong Kong	6.50
3	USA	5.85
4	EU	0.02



Powered by data from FE fundinfo

## Sector Breakdown (31 Jul 2024)

Rank	Sectors	%
1	Communications	22.40
2	Consumer Discretionary	20.42
3	Financials	16.66
4	Utilities	8.07
5	Consumer Staples	7.74
6	Money Market	6.12
7	Health Care	5.54
8	Industrials	4.97
9	Information Technology	3.13
10	Others	4.95



Powered by data from FE fundinfo

## Top Holdings (31 Jul 2024)

Rank	Largest Holdings	%
1	TENCENT HOLDINGS LTD	9.23
2	NETEASE INC	7.75

## Wellington All-China Focus Equity N U Acc GBP

Rank	Largest Holdings	%
3	ALIBABA GROUP HOLDING LTD	6.34
4	MIDEA GROUP CO LTD	4.97
5	KWEICHOW MOUTAI CO LTD	4.89
6	MEITUAN	4.65
7	PICC PROP & CASUALTY CO LTD	3.97
8	CHINA YANGTZE POWER CO LTD	3.85
9	HONG KONG EXCHANGES & CLEARING	3.61
10	CHINA PACIFIC INS GRP CO LTD	3.45